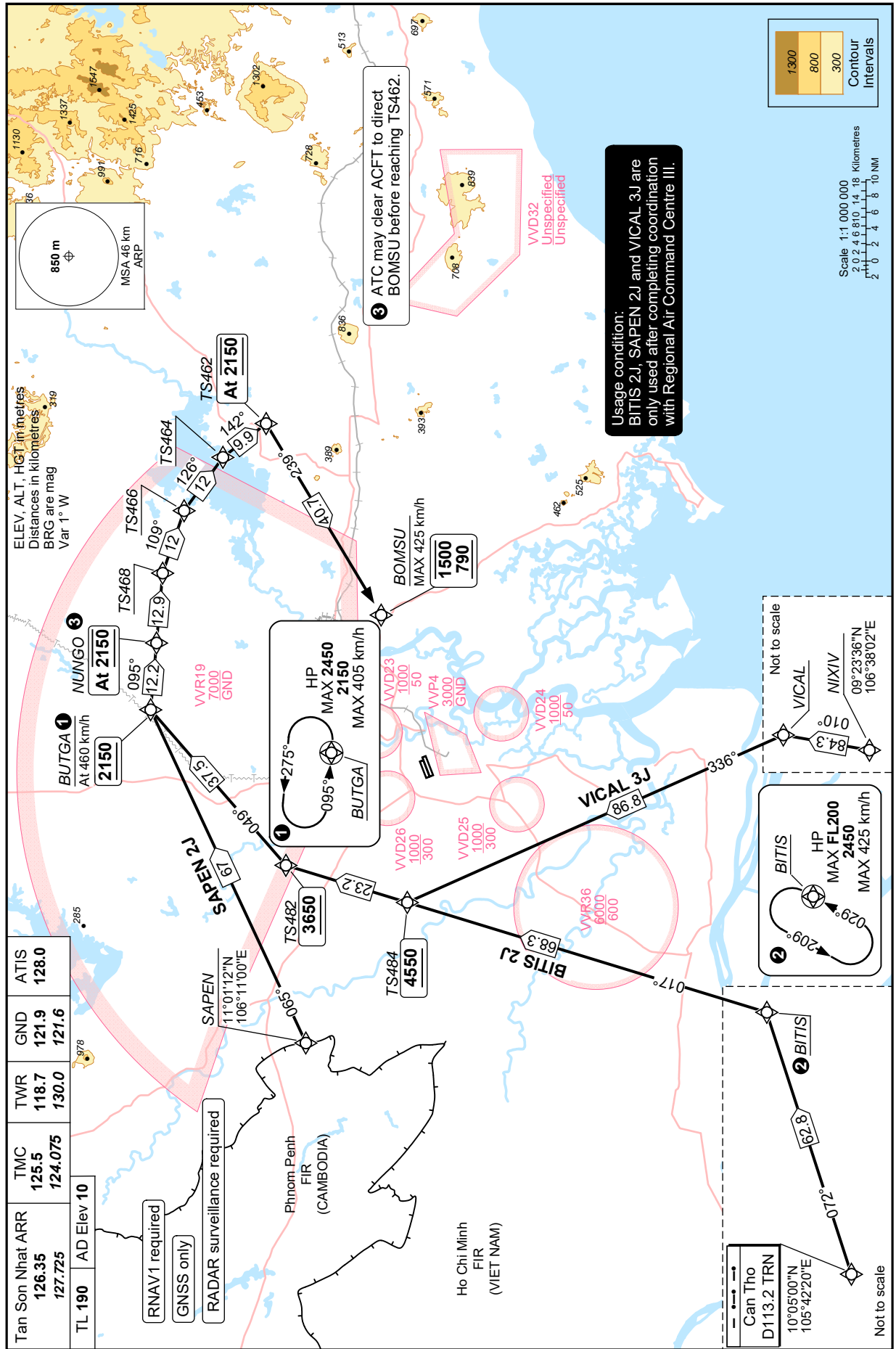


**STANDARD ARRIVAL  
CHART - INSTRUMENT  
(STAR)**

TRANSITION LVL FL190  
TRANSITION ALT 5500 m

**HO CHI MINH/TAN SON NHAT INTL (VVTS)**  
**RNAV RWY 25L/R**  
**BITIS 2J SAPEN 2J**  
**VICAL 3J**

Changes: Replacement of NIXUP (NIXIV) and Related data; Deletion of TMA limit.



Tan Son Nhat ARR	126.35	127.725	AD Elev 10
TMC	125.5	124.075	
TWR	118.7	130.0	
GND	121.9	121.6	
ATIS	128.0		

- RNAV1 required
- GNSS only
- RADAR surveillance required

Can Tho  
D113.2 TRN  
10°05'00"N  
105°42'20"E  
Not to scale

BITIS  
HP  
MAX FL200  
2450  
MAX 425 km/h  
029°  
209°  
Not to scale

VICAL  
NIXIV  
09°23'36"N  
106°38'02"E  
Not to scale

Usage condition:  
BITIS 2J, SAPEN 2J and VICAL 3J are  
only used after completing coordination  
with Regional Air Command Centre III.

ATC may clear ACFT to direct  
BOMSU before reaching TS462.

BOMSU  
MAX 425 km/h  
1500  
790

BUTGA  
HP  
MAX 2450  
2150  
MAX 405 km/h  
095°  
275°

1300  
800  
300  
Contour  
Intervals

Scale 1:1 000 000  
2 0 2 4 6 8 10 18  
Kilometres  
2 0 2 4 6 8 10 NM