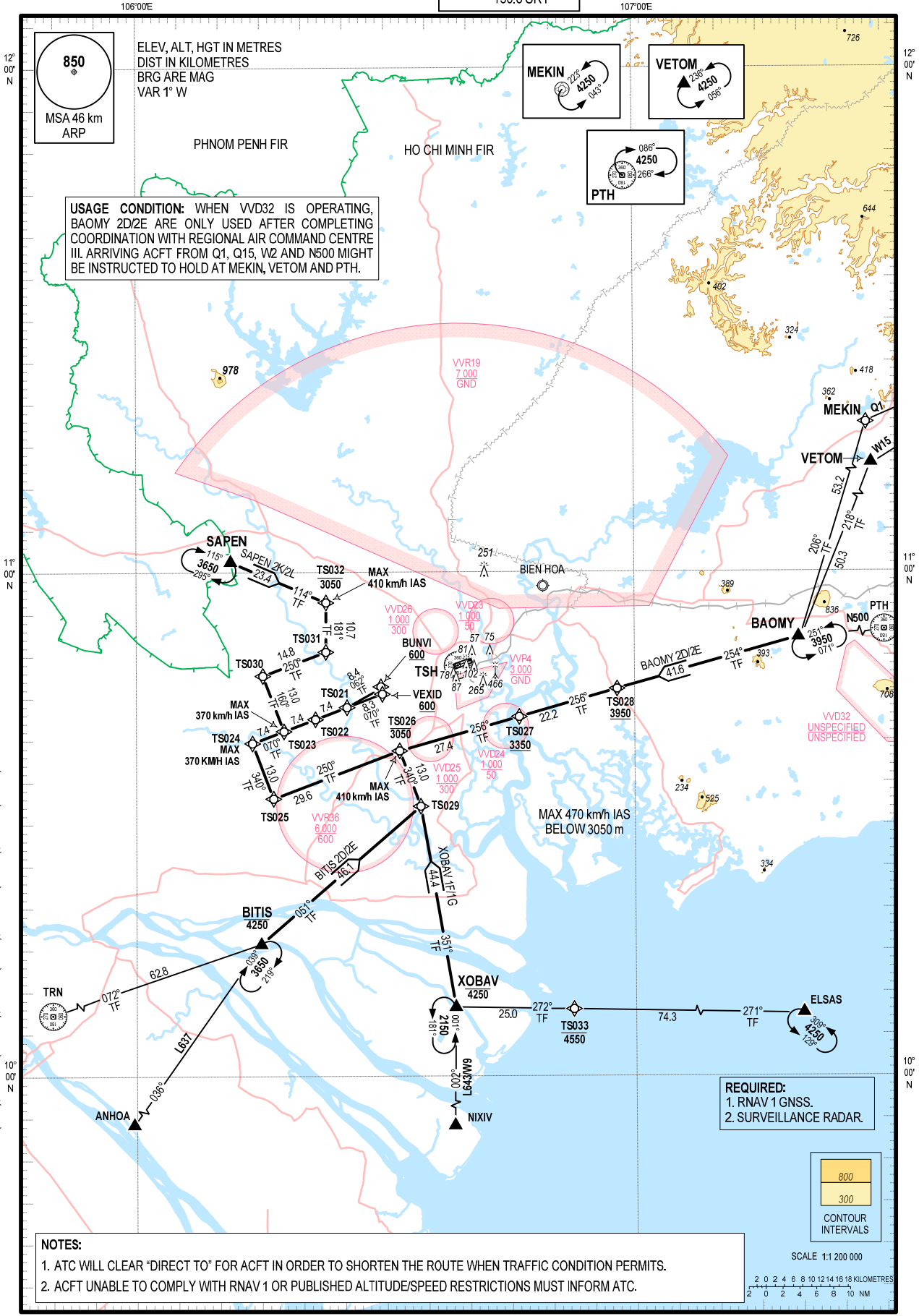


**STANDARD ARRIVAL CHART -
INSTRUMENT (STAR) - ICAO**

TRANSITION ALTITUDE
5500 m

TMC: 125.5 PRI
124.075 SRY
ARR: 126.35 PRI
127.725 SRY
TWR: 118.7 PRI
130.0 SRY

**HO CHI MINH/TAN SON NHAT INTL (VVTS)
RNAV RWY 07L/R**
BAOMY 2D, BITIS 2D, XOBAV 1F, SAPEN 2K (RWY 07L)
BAOMY 2E, BITIS 2E, XOBAV 1G, SAPEN 2L (RWY 07R)



CHANGES: REPLACEMENT OF TSN (TSH), LATHA (XOBAV), NIXUP (NIXIV), MULAN (BUNVI), KIBEK (VEXID) AND RELATED DATA.