

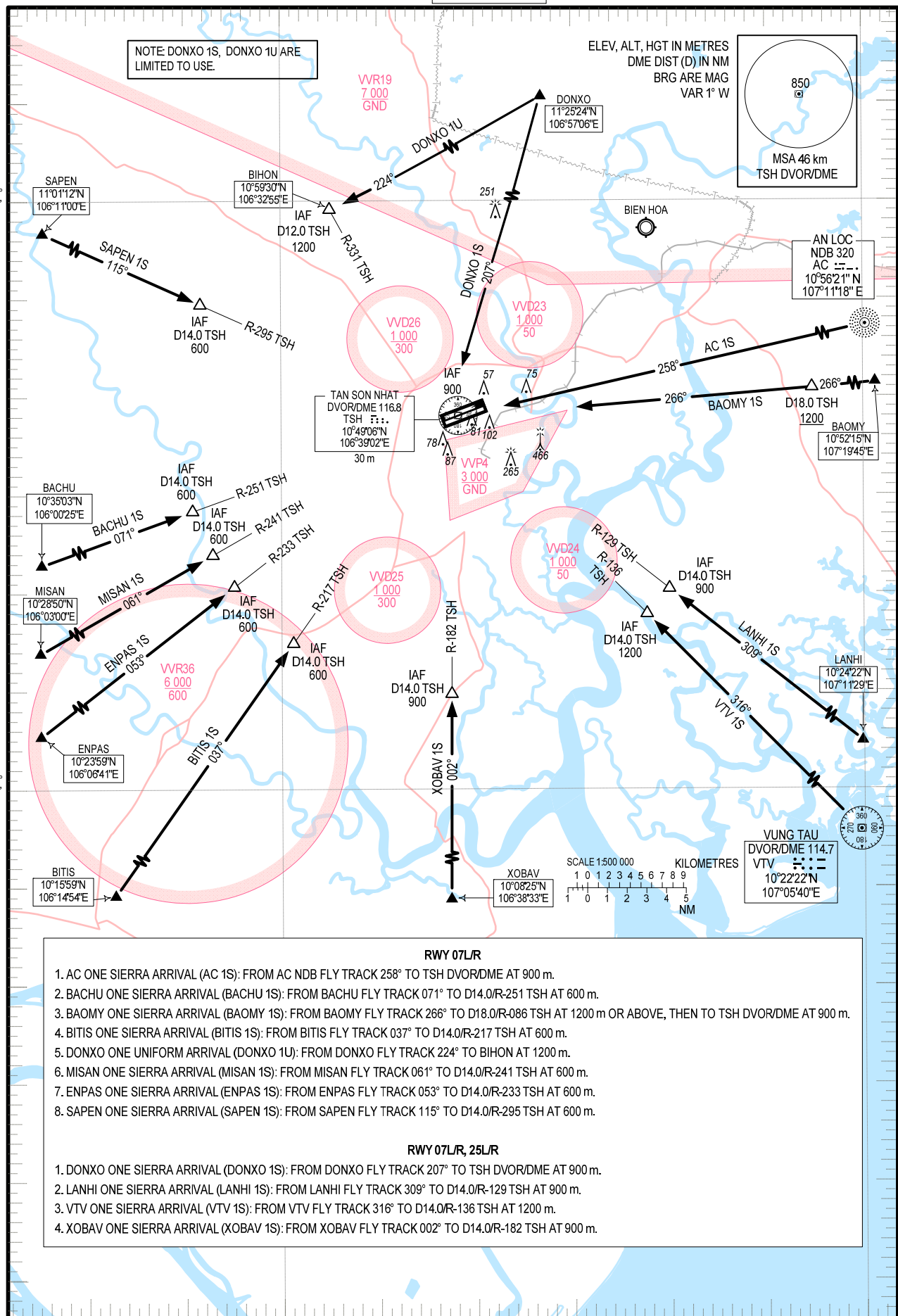
**STANDARD ARRIVAL CHART - INSTRUMENT (STAR) - ICAO**

TRANSITION ALTITUDE 5500 m  
TRANSITION LEVEL FL190

TMC: 125.5 PRI  
124.075 SRY  
ARR: 126.35 PRI  
127.725 SRY  
TWR: 118.7 PRI  
130.0 SRY

**HO CHI MINH/TAN SON NHAT INTL (VTVS)  
RWY 07L/R, 25L/R**

AC 1S, BACHU 1S, BAOMY 1S, BITIS 1S, DONXO 1S, DONXO 1U, ENPAS 1S, XOBAB 1S, LANHI 1S, MISAN 1S, SAPEN 1S, VTV 1S



- RWY 07L/R**
1. AC ONE SIERRA ARRIVAL (AC 1S): FROM AC NDB FLY TRACK 258° TO TSH DVORDME AT 900 m.
  2. BACHU ONE SIERRA ARRIVAL (BACHU 1S): FROM BACHU FLY TRACK 071° TO D14.0/R-251 TSH AT 600 m.
  3. BAOMY ONE SIERRA ARRIVAL (BAOMY 1S): FROM BAOMY FLY TRACK 266° TO D18.0/R-086 TSH AT 1200 m OR ABOVE, THEN TO TSH DVOR/DME AT 900 m.
  4. BITIS ONE SIERRA ARRIVAL (BITIS 1S): FROM BITIS FLY TRACK 037° TO D14.0/R-217 TSH AT 600 m.
  5. DONXO ONE UNIFORM ARRIVAL (DONXO 1U): FROM DONXO FLY TRACK 224° TO BIHON AT 1200 m.
  6. MISAN ONE SIERRA ARRIVAL (MISAN 1S): FROM MISAN FLY TRACK 061° TO D14.0/R-241 TSH AT 600 m.
  7. ENPAS ONE SIERRA ARRIVAL (ENPAS 1S): FROM ENPAS FLY TRACK 053° TO D14.0/R-233 TSH AT 600 m.
  8. SAPEN ONE SIERRA ARRIVAL (SAPEN 1S): FROM SAPEN FLY TRACK 115° TO D14.0/R-295 TSH AT 600 m.
- RWY 07L/R, 25L/R**
1. DONXO ONE SIERRA ARRIVAL (DONXO 1S): FROM DONXO FLY TRACK 207° TO TSH DVOR/DME AT 900 m.
  2. LANHI ONE SIERRA ARRIVAL (LANHI 1S): FROM LANHI FLY TRACK 309° TO D14.0/R-129 TSH AT 900 m.
  3. VTV ONE SIERRA ARRIVAL (VTV 1S): FROM VTV FLY TRACK 316° TO D14.0/R-136 TSH AT 1200 m.
  4. XOBAB ONE SIERRA ARRIVAL (XOBAB 1S): FROM XOBAB FLY TRACK 002° TO D14.0/R-182 TSH AT 900 m.

CHANGES: PROCEDURES; REPLACEMENT OF TSN (TSH), LATHA (XOBAB), KANTA (ENPAS), BASON (BACHU) AND RELATED DATA.