

**STANDARD DEPARTURE
CHART – INSTRUMENT
(SID)**

TRANSITION LVL FL190
TRANSITION ALT 5500 m

**HO CHI MINH/TAN SON NHAT INTL (VVTS)
RNAV RWY 25L/R
KADUM 2F**

Change: Deletion of TMA limit.

Tan Son Nhat DLV 121.8 123.6	AD Elev 10	GND 121.9 121.6	TWR 118.7 130.0	TMC 125.5 124.075	ATIS 128.0
------------------------------------	------------	-----------------------	-----------------------	-------------------------	---------------

RNAV1 required

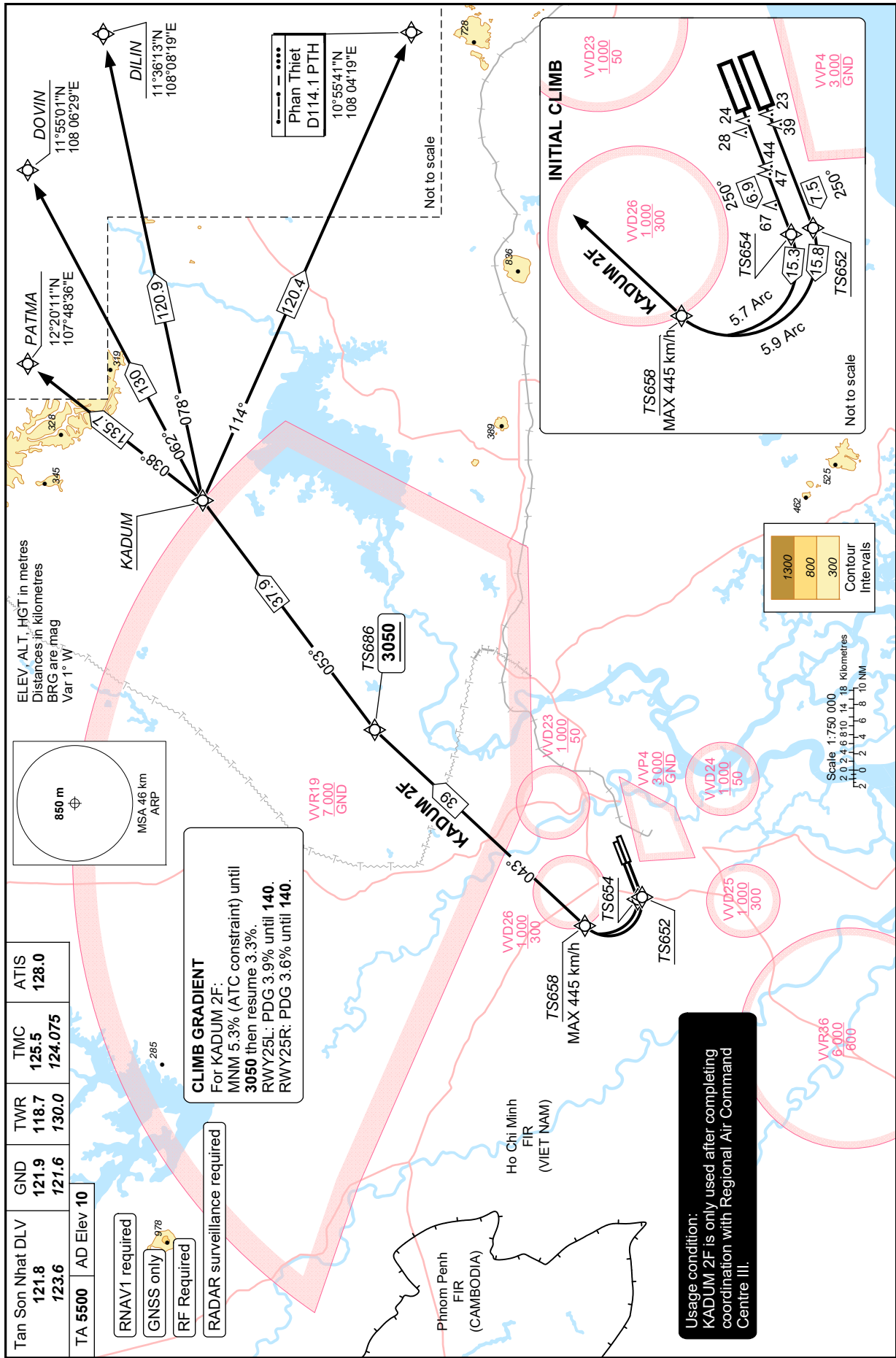
GNSS only ⁹⁷⁸

RF Required

RADAR surveillance required

CLIMB GRADIENT

For KADUM 2F:
MNM 5.3% (ATC constraint) until
3050 then resume 3.3%.
RWY25L: PDG 3.9% until 140.
RWY25R: PDG 3.6% until 140.



Usage condition:
KADUM 2F is only used after completing
coordination with Regional Air Command
Centre III.