

**STANDARD DEPARTURE
CHART – INSTRUMENT
(SID)**

TRANSITION LVL FL190
TRANSITION ALT 5500 m

**HO CHI MINH/TAN SON NHAT INTL (WVTS)
RNAV RWY 25L/R
TANOS 2E**

Change: Deletion of TMA limit.

Tan Son Nhat DLV	121.8	123.6	GND	121.9	121.6	TWR	118.7	130.0	TMC	125.5	124.075	ATIS	128.0
TA 5500	AD Elev 10												

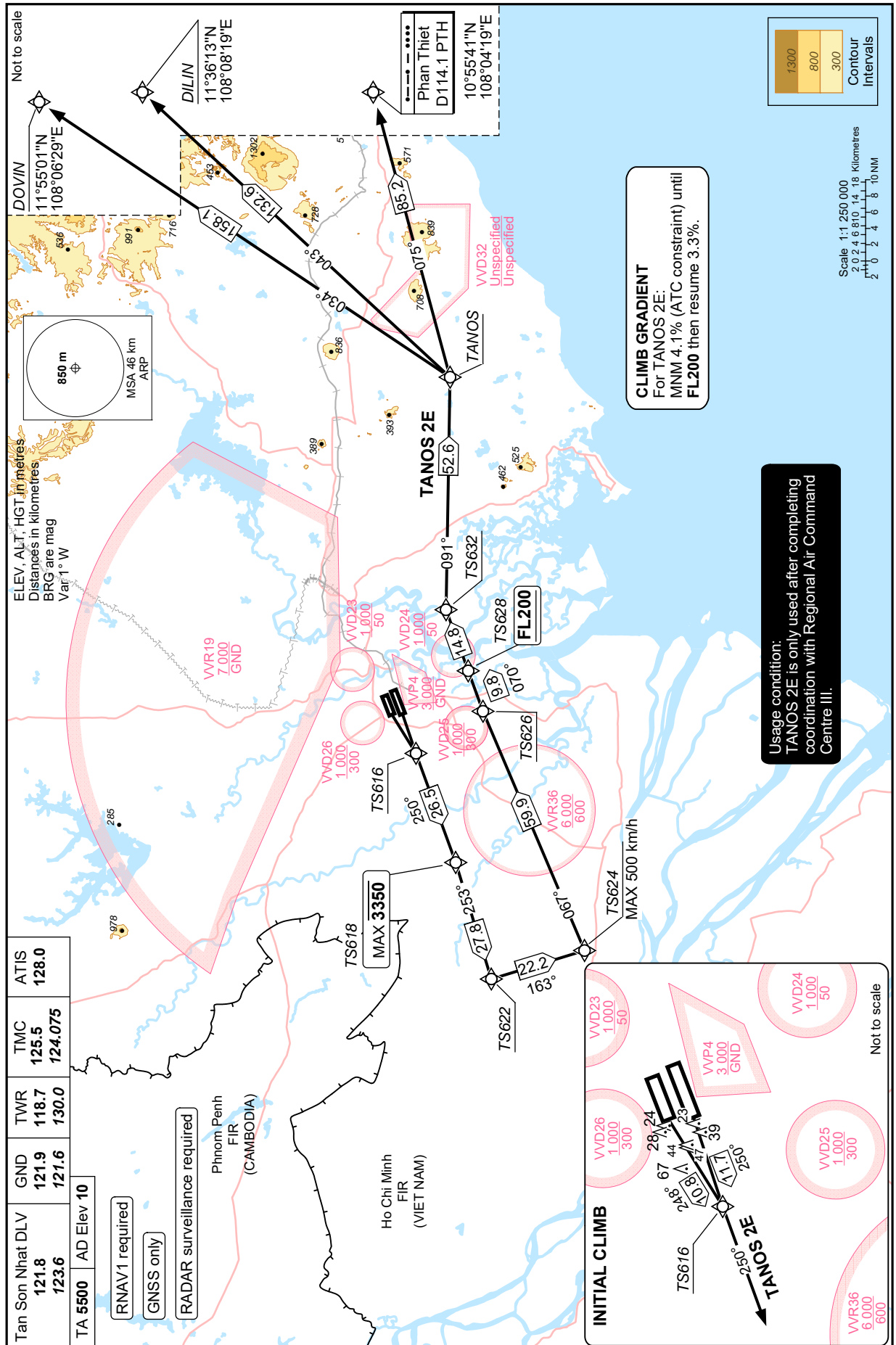
RNAV1 required

GNSS only

RADAR surveillance required

Phnom Penh
FIR
(CAMBODIA)

Ho Chi Minh
FIR
(VIET NAM)



CLIMB GRADIENT
For TANOS 2E:
MNM 4.1% (ATC constraint) until
FL200 then resume 3.3%.

Usage condition:
TANOS 2E is only used after completing
coordination with Regional Air Command
Centre III.

