

**STANDARD DEPARTURE
CHART – INSTRUMENT
(SID)**

TRANSITION LVL FL190
TRANSITION ALT 5500 m

**HO CHI MINH/TAN SON NHAT INTL (WVTS)
RNAV RWY 25L/R
ANTRI 2E LANHI 2E**

Change: Deletion of TMA limit.

Tan Son Nhat DLV	GND	TWR	TMC	ATIS
121.8	121.9	118.7	125.5	128.0
123.6	121.6	130.0	124.075	
TA 5500	AD Elev 10			

RNAV1 required

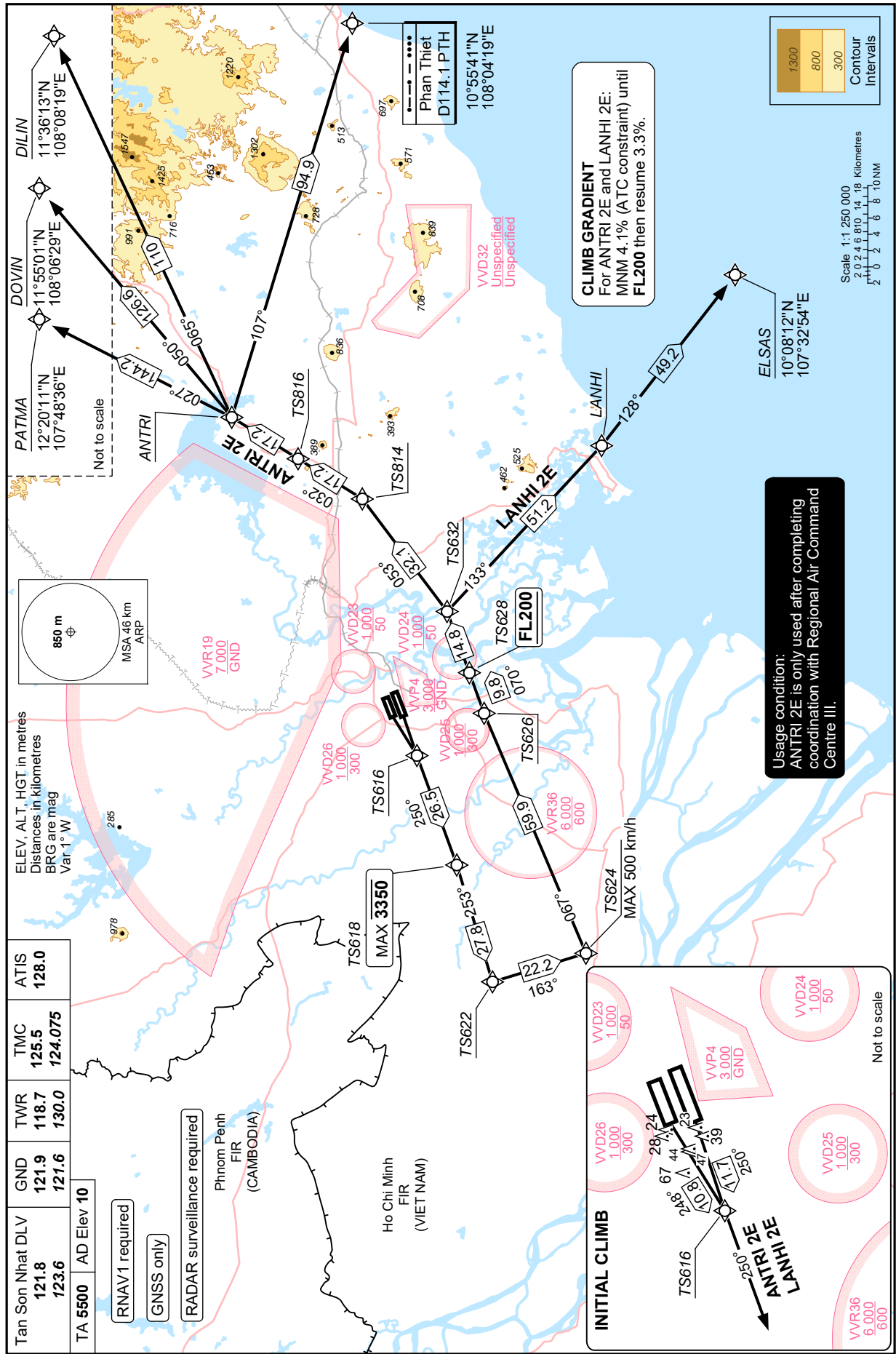
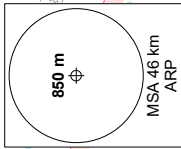
GNSS only

RADAR surveillance required

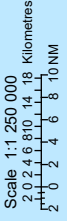
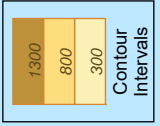
Phnom Penh
FIR
(CAMBODIA)

Ho Chi Minh
FIR
(VIET NAM)

ELEV. ALT, HGT in metres
Distances in kilometres
BRG are mag
Var 1° W



CLIMB GRADIENT
For ANTRI 2E and LANHI 2E:
MNM 4.1% (ATC constraint) until
FL200 then resume 3.3%.



Usage condition:
ANTRI 2E is only used after completing
coordination with Regional Air Command
Centre III.

