

**STANDARD DEPARTURE
CHART – INSTRUMENT
(SID)**

TRANSITION LVL FL190
TRANSITION ALT 5500 m

**HO CHI MINH/TAN SON NHAT INTL (VVTS)
RNAV RWY 25L/R
TANOS 2D**

Change: Deletion of TMA limit.

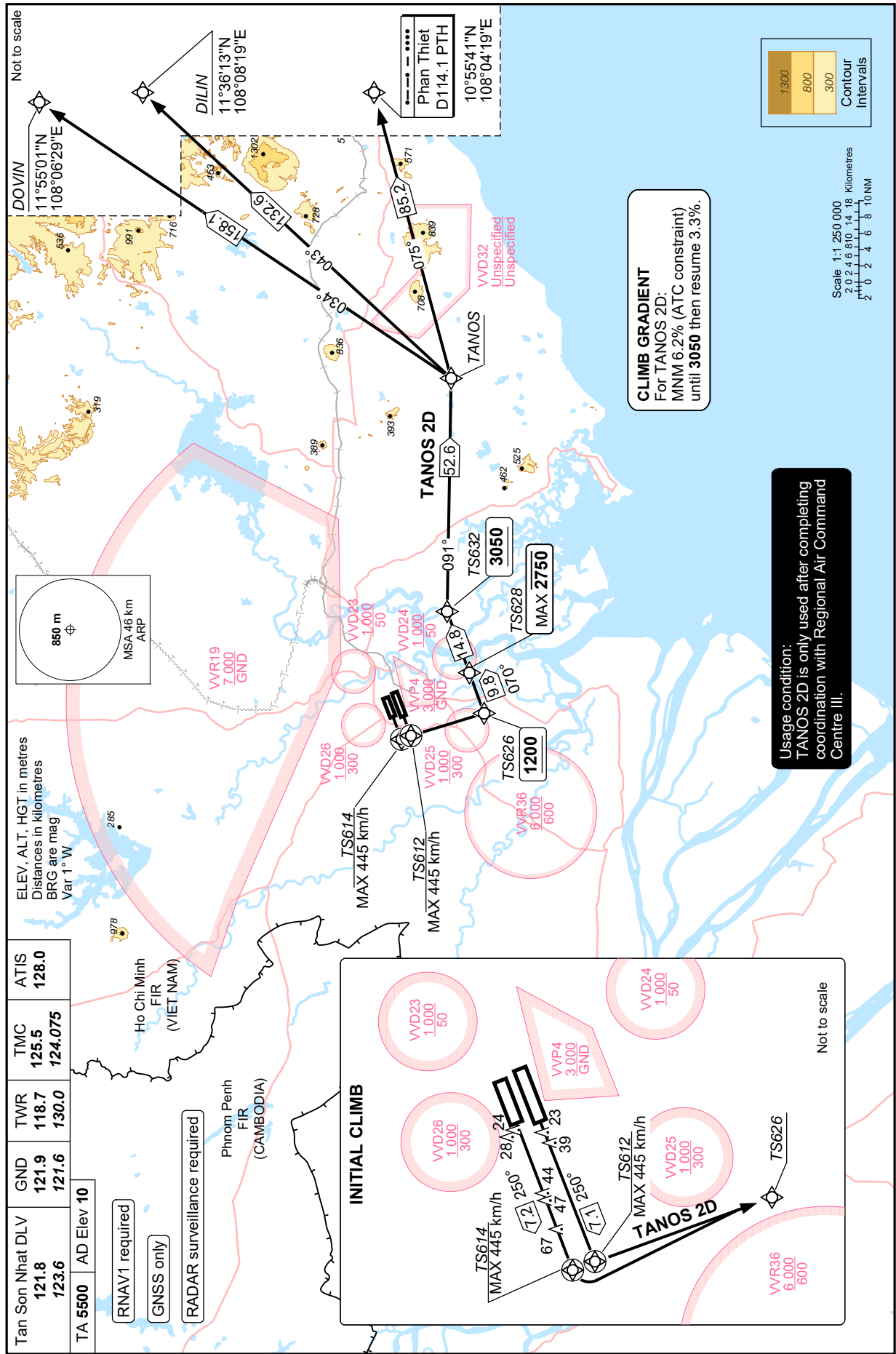
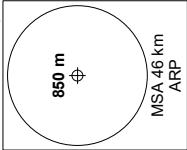
| | | | | |
|------------------------------------|-----------------------|-----------------------|-------------------------|---------------|
| Tan Son Nhat DLV 121.8 123.6 | GND 121.9 121.6 | TWR 118.7 130.0 | TMC 125.5 124.075 | ATIS 128.0 |
| TA 5500 | AD Elev 10 | | | |

RNAV1 required

GNSS only

RADAR surveillance required

ELEV, ALT, HGT in metres
Distances in kilometres
BRG are mag
Var 1° W



CLIMB GRADIENT
For TANOS 2D:
MNM 6.2% (ATC constraint)
until 3050 then resume 3.3%.

Usage condition:
TANOS 2D is only used after completing
coordination with Regional Air Command
Centre III.

