

**STANDARD DEPARTURE  
CHART – INSTRUMENT  
(SID)**

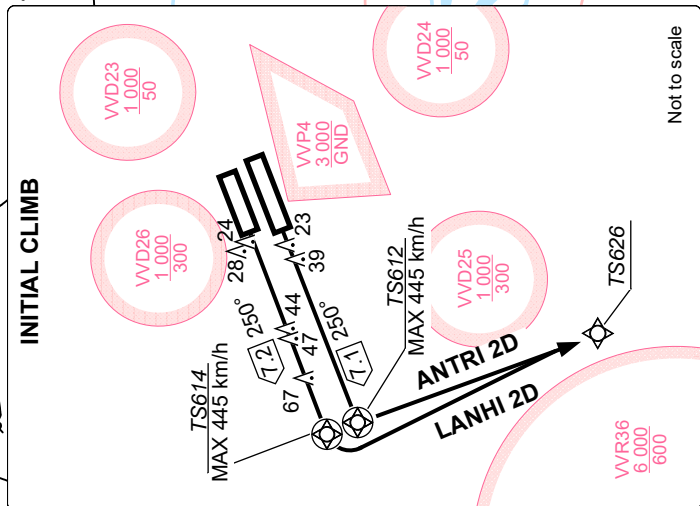
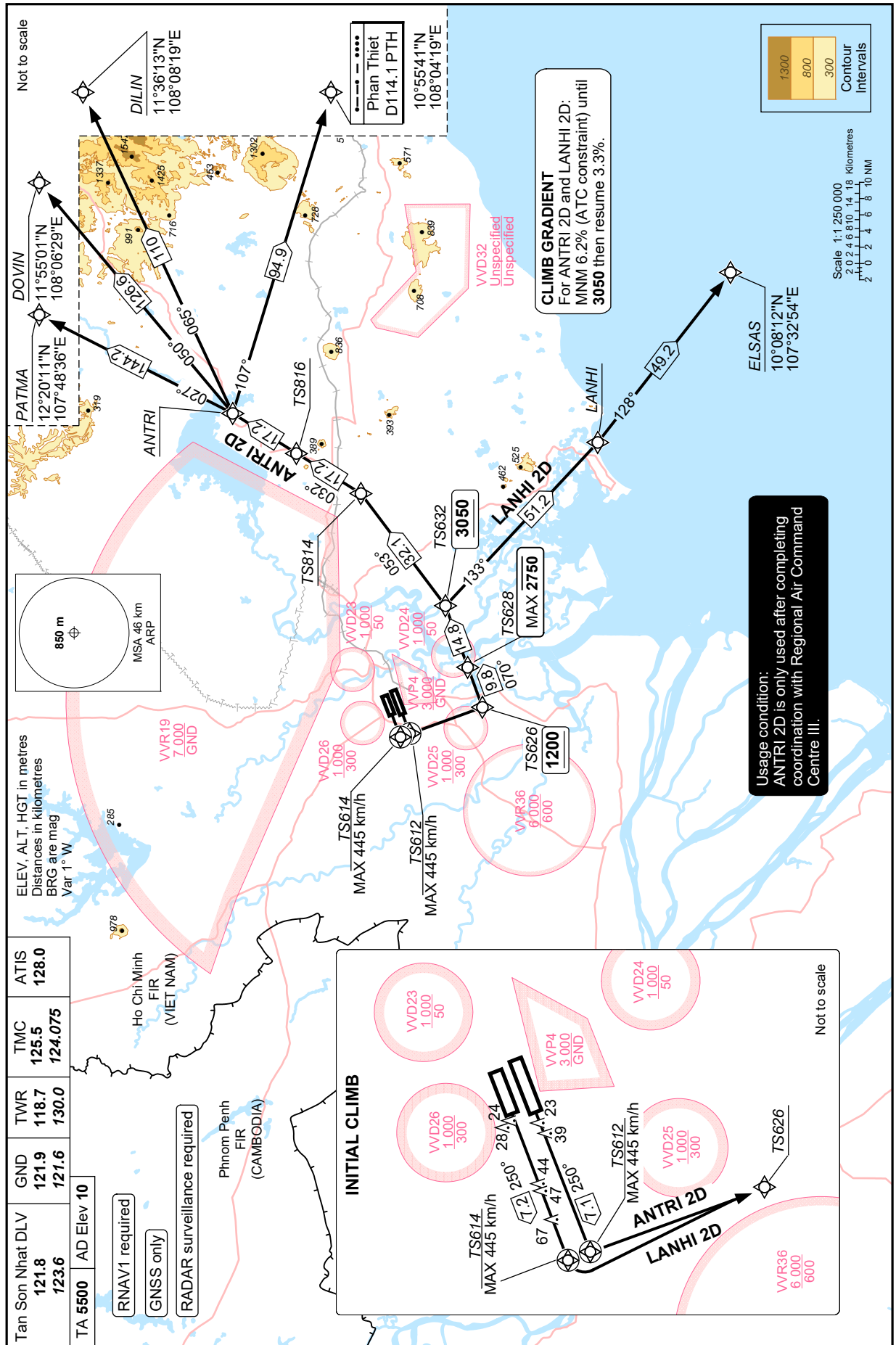
TRANSITION LVL FL190  
TRANSITION ALT 5500 m

**HO CHI MINH/TAN SON NHAT INTL (VVTS)  
RNAV RWY 25L/R  
ANTRI 2D LANHI 2D**

Change: Deletion of TMA limit.

Tan Son Nhat DLV	121.8	123.6	GND	121.9	121.6	TWR	118.7	130.0	TMC	125.5	124.075	ATIS	128.0
TA 5500	AD Elev 10												

- RNAV1 required
- GNSS only
- RADAR surveillance required



**CLIMB GRADIENT**  
For ANTRI 2D and LANHI 2D:  
MNM 6.2% (ATC constraint) until  
3050 then resume 3.3%.

**Usage condition:**  
ANTRI 2D is only used after completing  
coordination with Regional Air Command  
Centre III.