

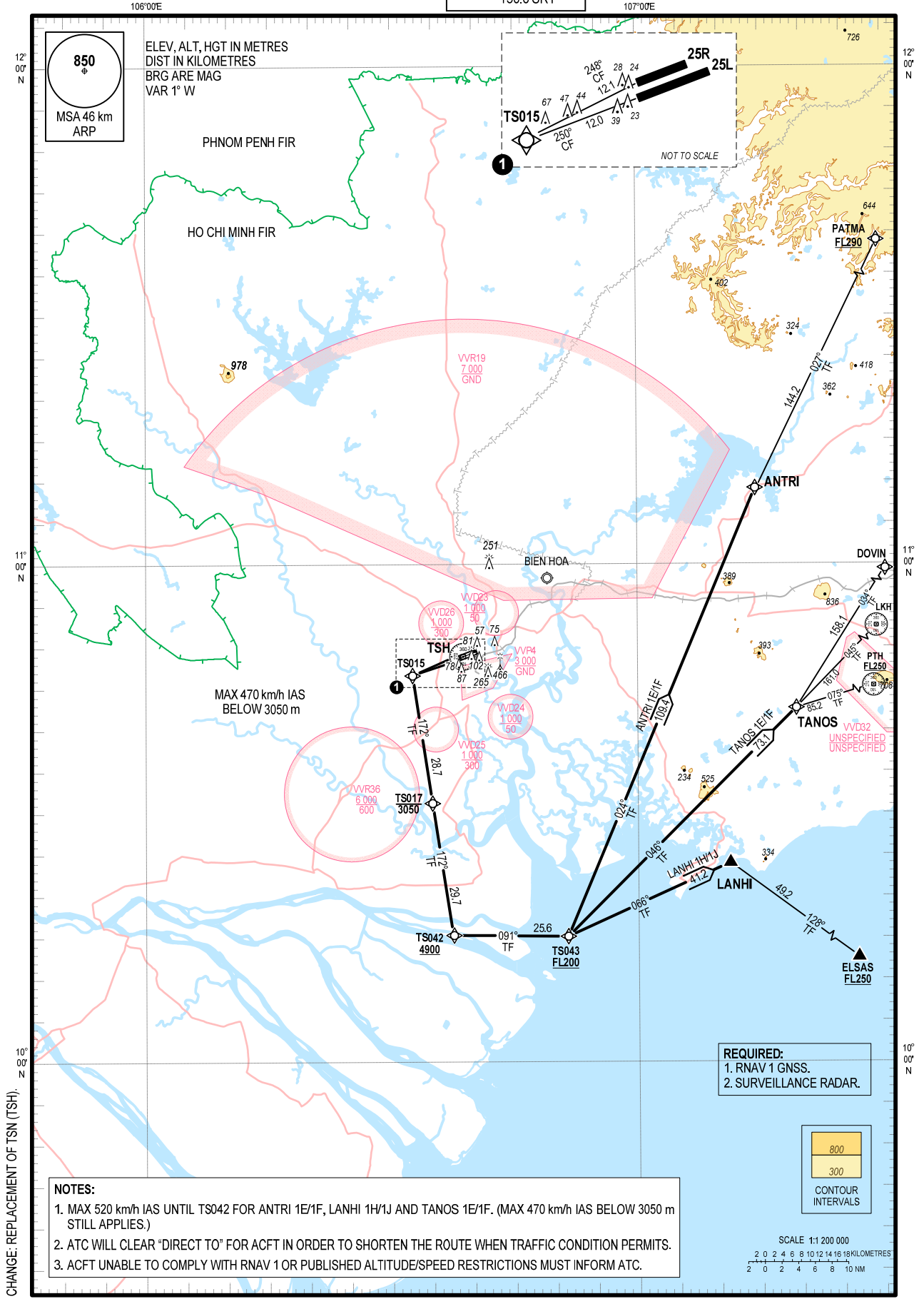
**STANDARD DEPARTURE CHART -
INSTRUMENT (SID) - ICAO**

TRANSITION ALTITUDE
5500 m

TMC: 125.5 PRI
124.075 SRY
ARR: 126.35 PRI
127.725 SRY
TWR: 118.7 PRI
130.0 SRY

**HO CHI MINH/TAN SON NHAT INTL (VVTS)
RNAV RWY 25L/R**

ANTRI 1E, LANHI 1H, TANOS 1E (RWY 25L)
ANTRI 1F, LANHI 1J, TANOS 1F (RWY 25R)



CHANGE: REPLACEMENT OF TSN (TSH).

- NOTES:**
1. MAX 520 km/h IAS UNTIL TS042 FOR ANTRI 1E/1F, LANHI 1H/1J AND TANOS 1E/1F. (MAX 470 km/h IAS BELOW 3050 m STILL APPLIES.)
 2. ATC WILL CLEAR "DIRECT TO" FOR ACFT IN ORDER TO SHORTEN THE ROUTE WHEN TRAFFIC CONDITION PERMITS.
 3. ACFT UNABLE TO COMPLY WITH RNAV 1 OR PUBLISHED ALTITUDE/SPEED RESTRICTIONS MUST INFORM ATC.

REQUIRED:
1. RNAV 1 GNSS.
2. SURVEILLANCE RADAR.

