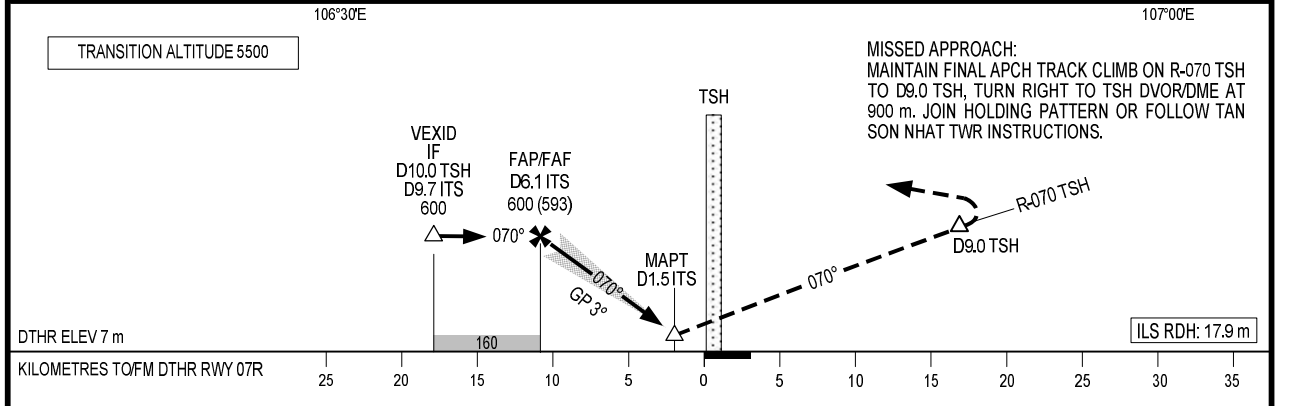
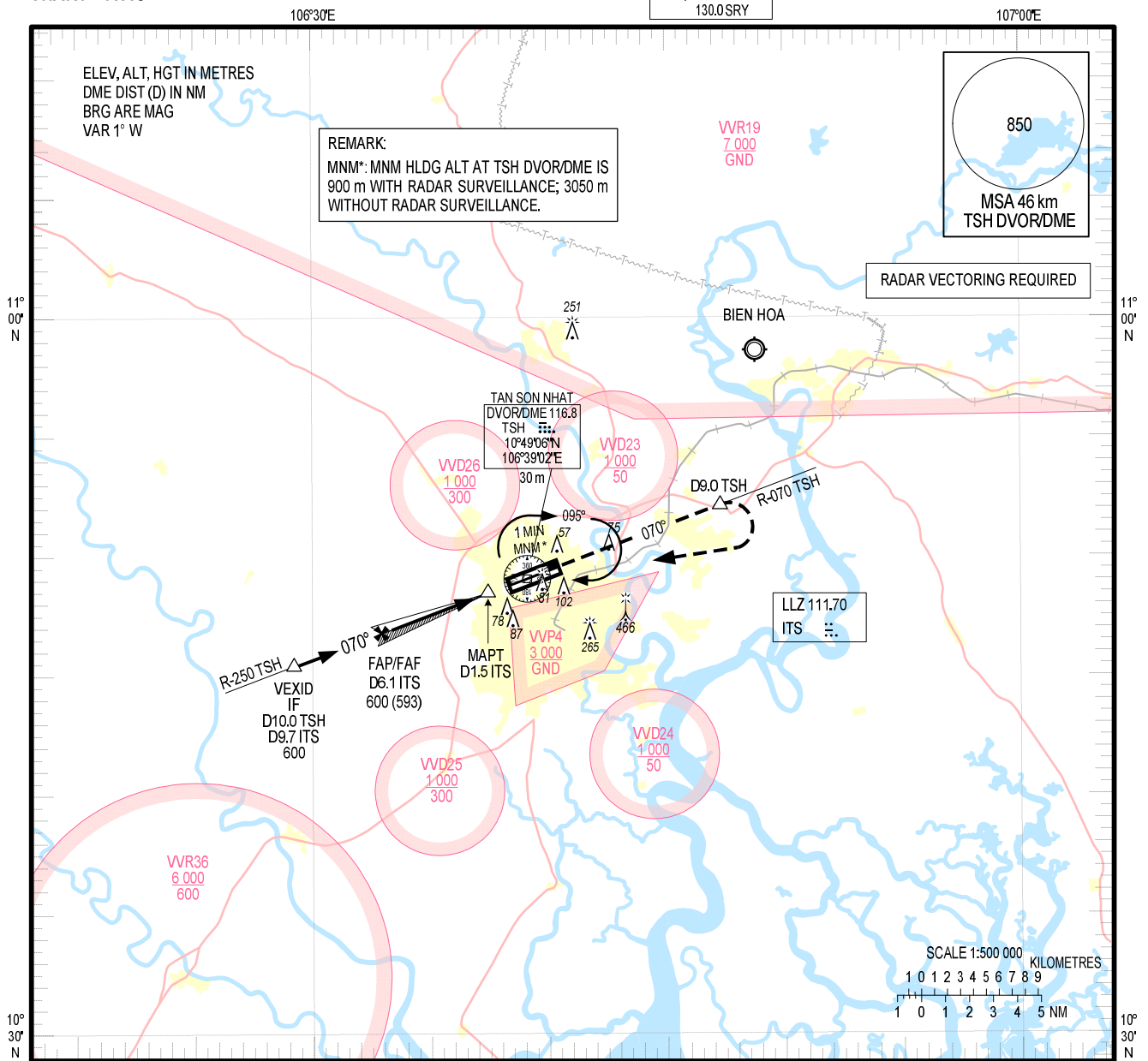


**INSTRUMENT
APPROACH
CHART – ICAO**

**AERODROME ELEV 10 m
HEIGHTS RELATED TO
DTHR RWY 07R - ELEV 7 m**

TMC: 125.5 PRI
124.075 SRY
ARR: 126.35 PRI
127.725 SRY
TWR: 118.7 PRI
130.0 SRY

**HO CHI MINH/TAN SON NHAT INTL (VVTS)
ILS Z RWY 07R**



| | | | | | | | | | | | | |
|-------------|---------|-----------|---------|-----------|---------|-------|------|------|------|------|------|-----|
| OCA/H | | A | B | C | D | GS | | | | | | |
| STRAIGHT-IN | CAT I | 80 (73) | 83 (76) | 86 (79) | 89 (82) | km/h | 150 | 200 | 250 | 300 | 350 | |
| | GP INOP | 150 (143) | | | | min:s | 3:24 | 2:33 | 2:02 | 1:42 | 1:27 | |
| CIRCLING | | 200 (190) | | 300 (290) | | ROD | m/s | 2.2 | 2.9 | 3.6 | 4.4 | 5.1 |

CIRCLING IS ONLY IN THE NORTH OF RWY.

CHANGE: NEW CHART.