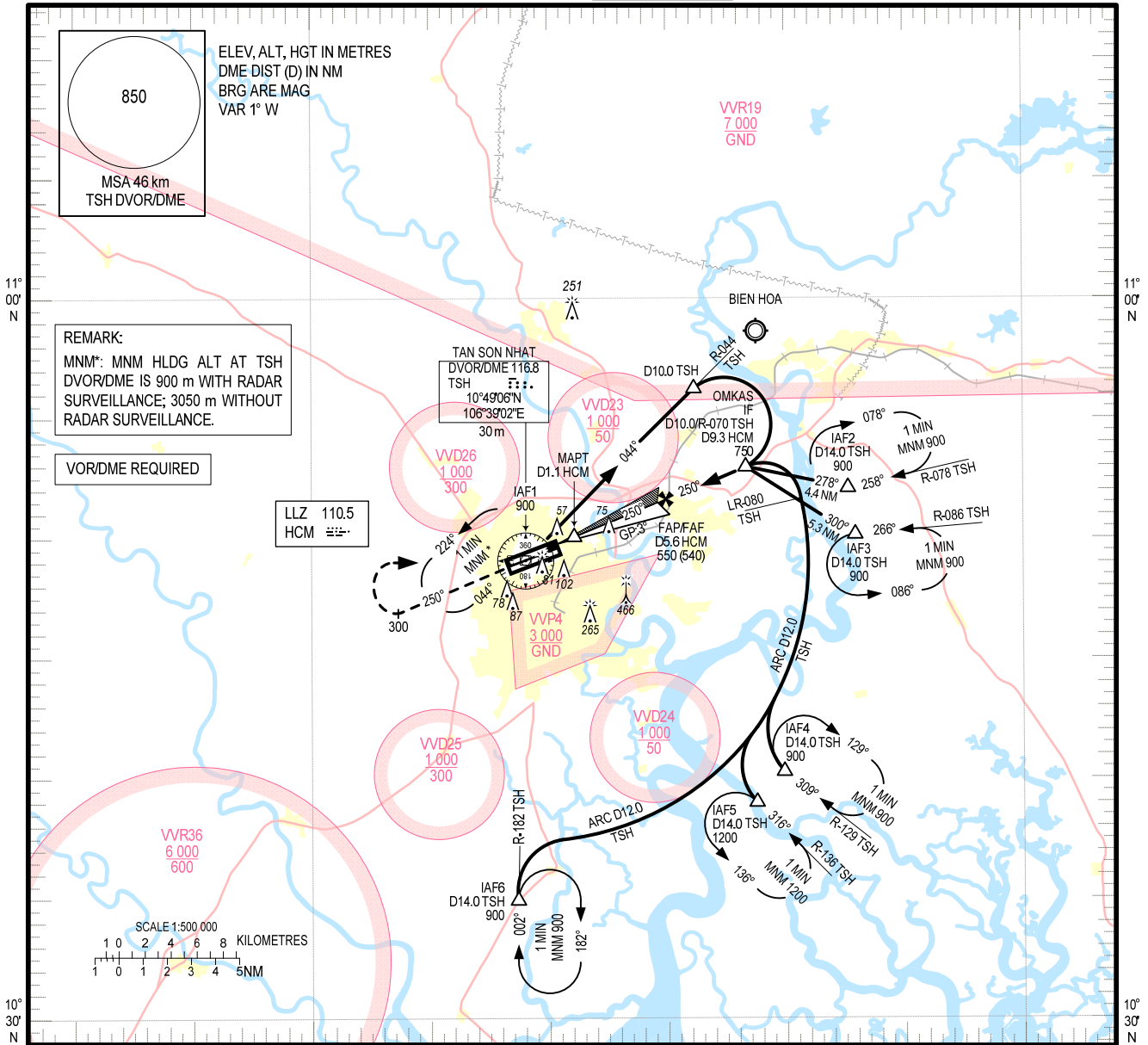


INSTRUMENT APPROACH CHART – ICAO

**AERODROME ELEV 10 m
HEIGHTS RELATED TO THR RWY 25R - ELEV 10 m**

TMC: 125.5 PRI
124.075 SRY
ARR: 126.35 PRI
127.725 SRY
TWR: 118.7 PRI
130.0 SRY

**HO CHI MINH/TAN SON NHAT INTL (VVTS)
ILS Y RWY 25R**



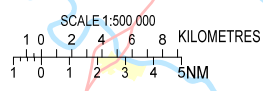
850
MSA 46 km
TSH DVOR/DME

ELEV. ALT. HGT IN METRES
DME DIST (D) IN NM
BRG ARE MAG
VAR 1° W

REMARK:
MNM*: MNM HLDG ALT AT TSH DVOR/DME IS 900 m WITH RADAR SURVEILLANCE; 3050 m WITHOUT RADAR SURVEILLANCE.

VOR/DME REQUIRED

LLZ 110.5 HCM

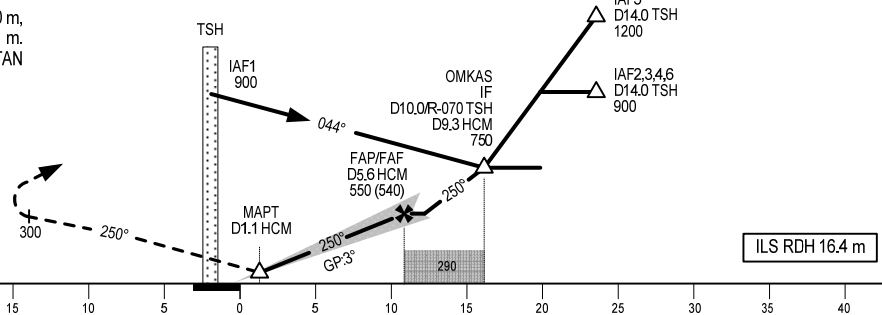


MISSED APPROACH:
MAINTAIN FINAL APCH TRACK CLIMB TO 300 m, TURN RIGHT TO TSH DVOR/DME AT 900 m. JOIN HOLDING PATTERN OR FOLLOW TAN SON NHAT TWR INSTRUCTIONS.

TRANSITION ALTITUDE 5500

THR ELEV 10 m

KILOMETRES TO/ FM THR RWY 25R



ILS RDH 16.4 m

		OCA/H				GS	km/h	150	200	250	300	350
CAT		A	B	C	D							
STRAIGHT IN APCH	CAT I	68 (58)	71 (61)	74 (64)	77 (67)	FAF - MAPT 4.5 NM	min:s	3:20	2:30	2:00	1:40	1:26
	GP INOP	155 (145)					ROD	m/s	2.2	2.9	3.6	4.4
CIRCLING		200(190)		300(290)								

CIRCLING IS ONLY IN THE NORTH OF RWY.

CHANGES: PROCEDURE, OCA/H AND RELATED DATA.