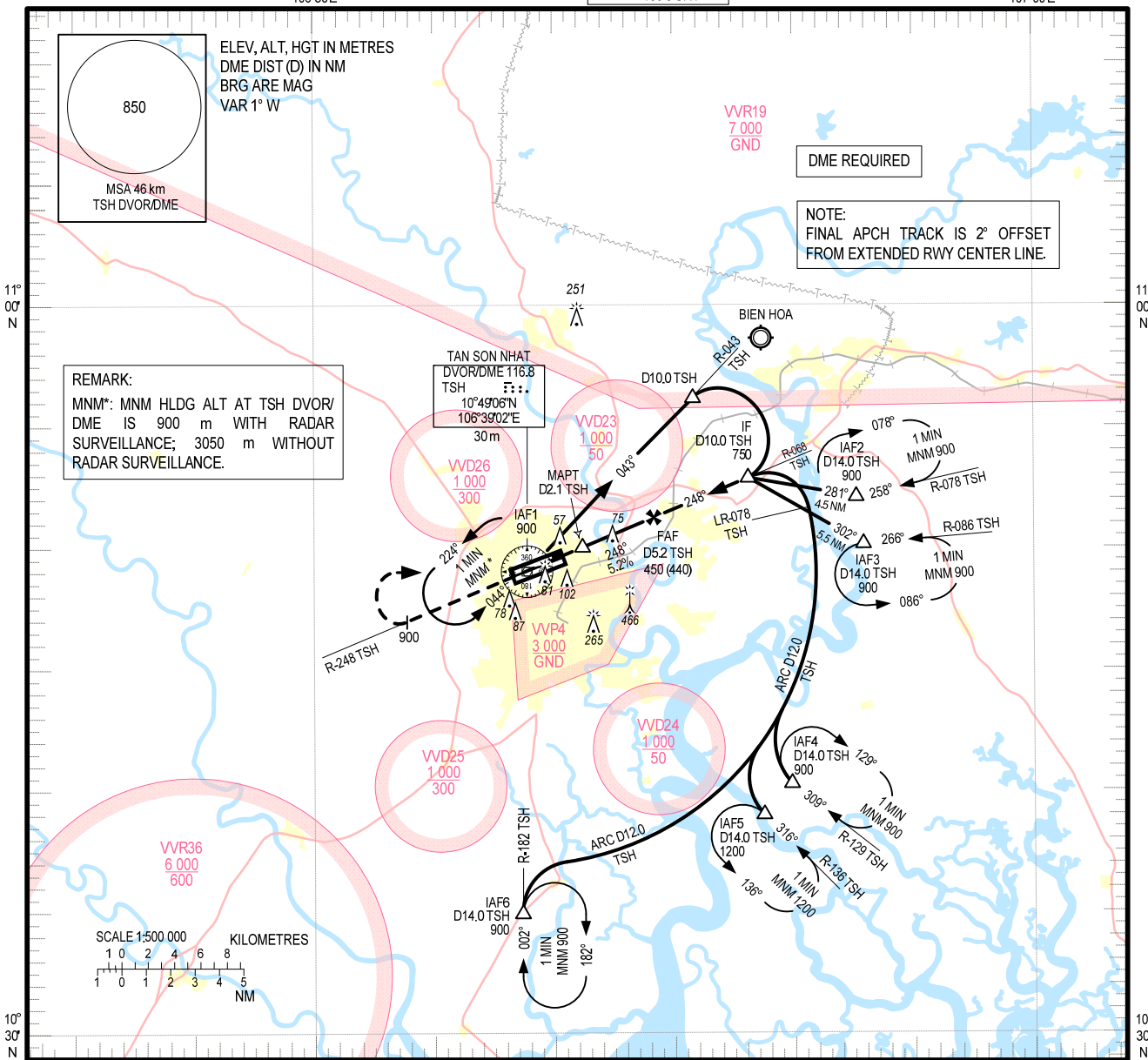


**INSTRUMENT
APPROACH
CHART – ICAO**

AERODROME ELEV 10 m
HEIGHTS RELATED TO
AD ELEV

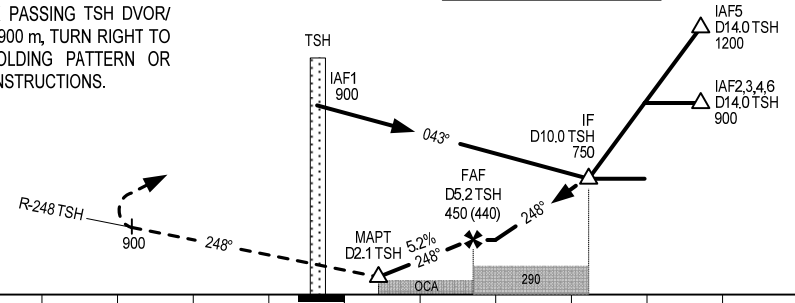
TMC: 125.5 PRI
ARR: 124.075 SRY
126.35 PRI
127.725 SRY
TWR: 118.7 PRI
130.0 SRY

**HO CHI MINH/TAN SON NHAT INTL (VVTS)
VOR RWY 25R**



MISSED APPROACH:
MAINTAIN FINAL APCH TRACK PASSING TSH DVOR/DME, CLIMB ON R-248 TSH TO 900 m, TURN RIGHT TO TSH DVOR/DME TO JOIN HOLDING PATTERN OR FOLLOW TAN SON NHAT TWR INSTRUCTIONS.

TRANSITION ALTITUDE 5500



AD ELEV 10 m
KILOMETRES TO/FM THR RWY 25R: 20 15 10 5 0 5 10 15 20 25 30 35 40

OCAH				
CAT	A	B	C	D
STRAIGHT-IN APCH	155 (145)			
CIRCLING	200 (190)		300 (290)	

CIRCLING IS ONLY IN THE NORTH OF RWY.

GS	km/h	150	200	250	300	350
FAF – MAPT 3.1 NM	min:s	2:18	1:43	1:23	1:09	0:59
ROD	m/s	2.2	2.9	3.6	4.4	5.1
DIST TO TSH (NM)	DME	5.2	5.0	4.0	3.0	2.2
ALT	M	450	430	330	235	155

CHANGES: PROCEDURE AND RELATED DATA.