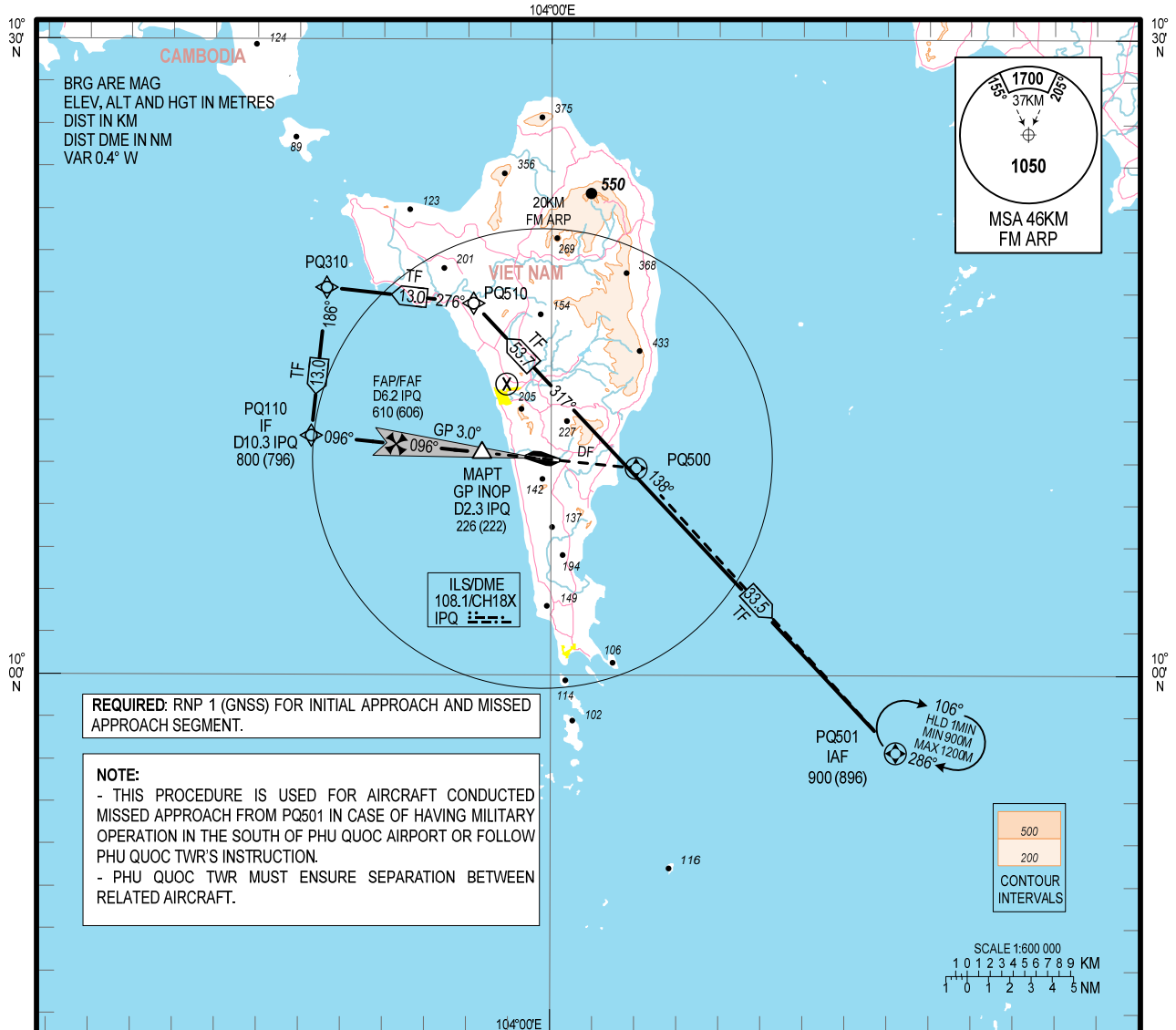


**INSTRUMENT
APPROACH
CHART - ICAO**

AERODROME ELEV: 7M
HEIGHTS RELATED TO
THR RWY 10 – ELEV 4M

TWR: 118.6 PRI
118.725 SRY

**KIEN GIANG/PHU QUOC INTL (VVPQ)
ILS X RWY 10**



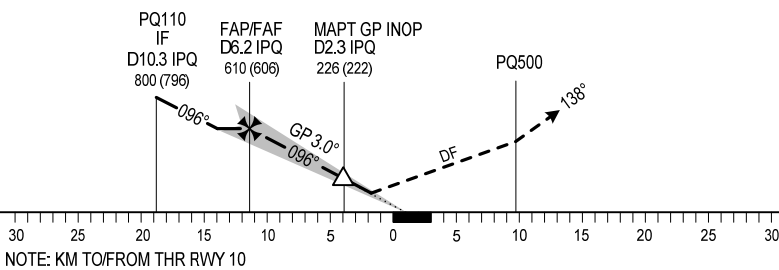
REQUIRED: RNP 1 (GNSS) FOR INITIAL APPROACH AND MISSED APPROACH SEGMENT.

NOTE:
- THIS PROCEDURE IS USED FOR AIRCRAFT CONDUCTED MISSED APPROACH FROM PQ501 IN CASE OF HAVING MILITARY OPERATION IN THE SOUTH OF PHU QUOC AIRPORT OR FOLLOW PHU QUOC TWR'S INSTRUCTION.
- PHU QUOC TWR MUST ENSURE SEPARATION BETWEEN RELATED AIRCRAFT.

TRANSITION ALT: 2750M

MISSED APPROACH:
CLIMB UNTIL PASSING PQ500, TURN RIGHT TO PQ501 REACH 900M (896M), JOIN HOLDING PATTERN, OR FOLLOW PHU QUOC TWR'S INSTRUCTIONS.

CHANGE: ADDITION OF TWR'S SECONDARY FREQUENCY.



ILS RDH 15M
THR ELEV 4M

NOTE: KM TO/FROM THR RWY 10

OCA (H)		A	B	C	D
STRAIGHT-IN APPROACH	CAT I	200 (196)	204 (200)	205 (201)	210 (206)
	GP INOP	226 (222)			
CIRCLING		NOT AUTHORIZED			

GS	KM/H	100	150	200	250	300	350
FAF – MAPT 7.2KM	MIN:S	4:20	2:53	2:10	1:44	1:27	1:14
RATE OF DESCENT	M/S	1.46	2.18	2.91	3.64	4.37	5.09
DME	NM	6.2	5	4	3	2.3	
HGT	M	606	489	392	294	222	