

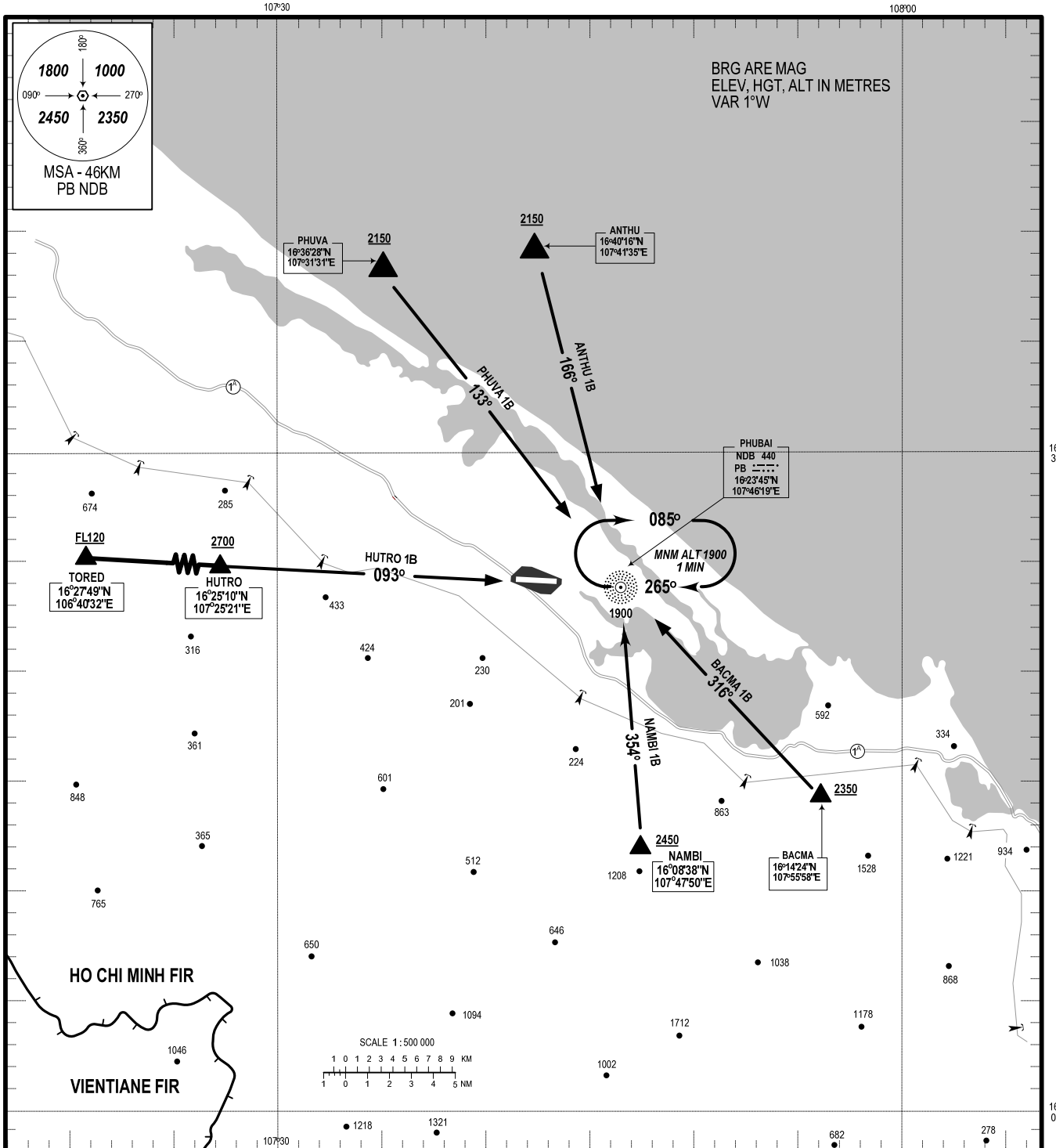
**STANDARD ARRIVAL CHART-  
INSTRUMENT (STAR) - ICAO**

**TRANSITION ALTITUDE  
2750 M**

**TWR : 118.8**

**THUA THIEN HUE/PHU BAI INTL (VVPB)  
RWY 27**

PHUVA 1B, ANTHU 1B,  
BACMA 1B, NAMBI 1B, HUTRO 1B



CHANGES: ADDITION OF NAMBI 1B; CANCELLATION OF VALAN 1B

**RWY 27:**

- 1. PHUVA ONE BRAVO ARRIVAL (PHUVA 1B):** FROM PHUVA AT ALT 2150M OR ABOVE, ON TRACK 133° DESCEND TO 1900M AT PB NDB. CAN USE ONE OF FOLLOWING PROCEDURES: NDB OR ILS X RWY 27.
- 2. ANTHU ONE BRAVO ARRIVAL (ANTHU 1B):** FROM ANTHU AT ALT 2150M OR ABOVE, ON TRACK 166° DESCEND TO 1900M AT PB NDB. CAN USE ONE OF FOLLOWING PROCEDURES: NDB OR ILS X RWY 27.
- 3. BACMA ONE BRAVO ARRIVAL (BACMA 1B):** FROM BACMA AT ALT 2350M OR ABOVE, ON TRACK 316° DESCEND TO 1900M AT PB NDB. CAN USE ONE OF FOLLOWING PROCEDURES: NDB OR ILS X RWY 27.
- 4. NAMBI ONE BRAVO ARRIVAL (NAMBI 1B):** FROM NAMBI AT ALT 2450M OR ABOVE, ON TRACK 354° DESCEND TO 1900M AT PB NDB. CAN USE ONE OF FOLLOWING PROCEDURES: NDB OR ILS X RWY 27.
- 5. HUTRO ONE BRAVO ARRIVAL (HUTRO 1B):** FROM TORED AT FL120 TO HUTRO AT ALT 2700M. WHEN PASSING HUTRO, ON TRACK 093° DESCEND TO 1900M AT PB NDB. CAN USE ONE OF FOLLOWING PROCEDURES: NDB OR ILS X RWY 27.