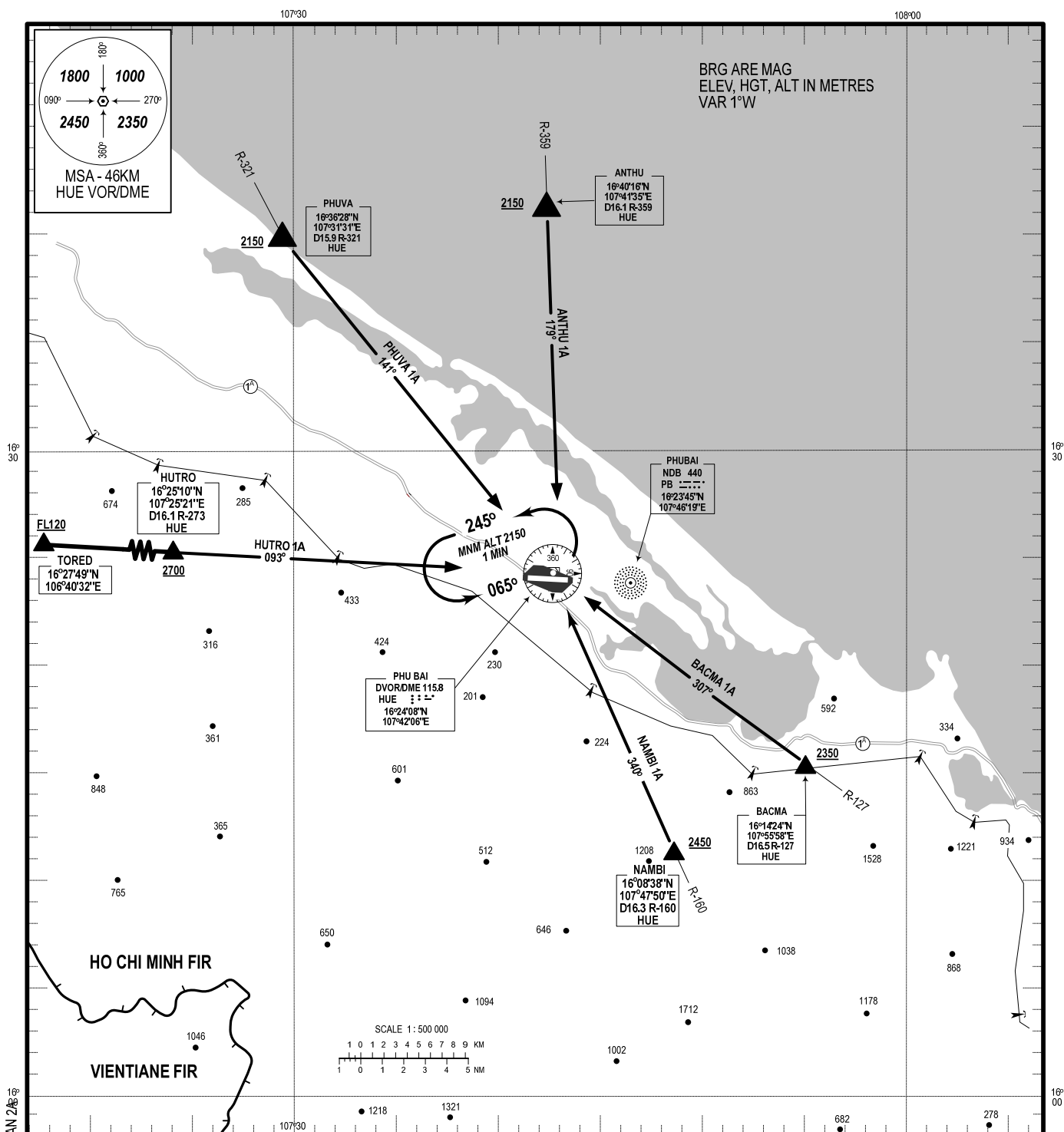


**STANDARD ARRIVAL CHART-
INSTRUMENT (STAR) - ICAO**

**TRANSITION ALTITUDE
2750 M**

TWR : 118.8

**THUA THIEN HUE/PHU BAI INTL (VVPB)
RWY 27**
PHUVA 1A, ANTHU 1A, BACMA 1A,
NAMBI 1A, HUTRO 1A



CHANGES: ADDITION OF NAMBI 1A, CANCELLATION OF VALAN 2A

RWY 27:

- 1. PHUVA ONE ALPHA ARRIVAL (PHUVA 1A):** FROM PHUVA AT ALT 2150M OR ABOVE, PROCEED TO HUE ON R-321 AT 2150M. CAN USE ONE OF FOLLOWING PROCEDURES: VOR OR ILS Z RWY 27.
- 2. ANTHU ONE ALPHA ARRIVAL (ANTHU 1A):** FROM ANTHU AT ALT 2150M OR ABOVE, PROCEED TO HUE ON R-359 AT 2150M. CAN USE ONE OF FOLLOWING PROCEDURES: VOR OR ILS Z RWY 27.
- 3. BACMA ONE ALPHA ARRIVAL (BACMA 1A):** FROM BACMA AT ALT 2350M OR ABOVE, PROCEED TO HUE ON R-127 DESCEND TO 2150M AT HUE VOR/DME. CAN USE ONE OF FOLLOWING PROCEDURES: VOR OR ILS Z RWY 27.
- 4. NAMBI ONE ALPHA ARRIVAL (NAMBI 1A):** FROM NAMBI AT ALT 2450M OR ABOVE, PROCEED TO HUE ON R-160 DESCEND TO 2150M AT HUE VOR/DME. CAN USE ONE OF FOLLOWING PROCEDURES: VOR OR ILS Z RWY 27.
- 5. HUTRO ONE ALPHA ARRIVAL (HUTRO 1A):** FROM TORED AT FL120 TO HUTRO DESCEND TO 2700M AT HUTRO, PROCEED TO HUE ON R-273 AT 2150M. CAN USE ONE OF FOLLOWING PROCEDURES: VOR OR ILS Z RWY 27.