

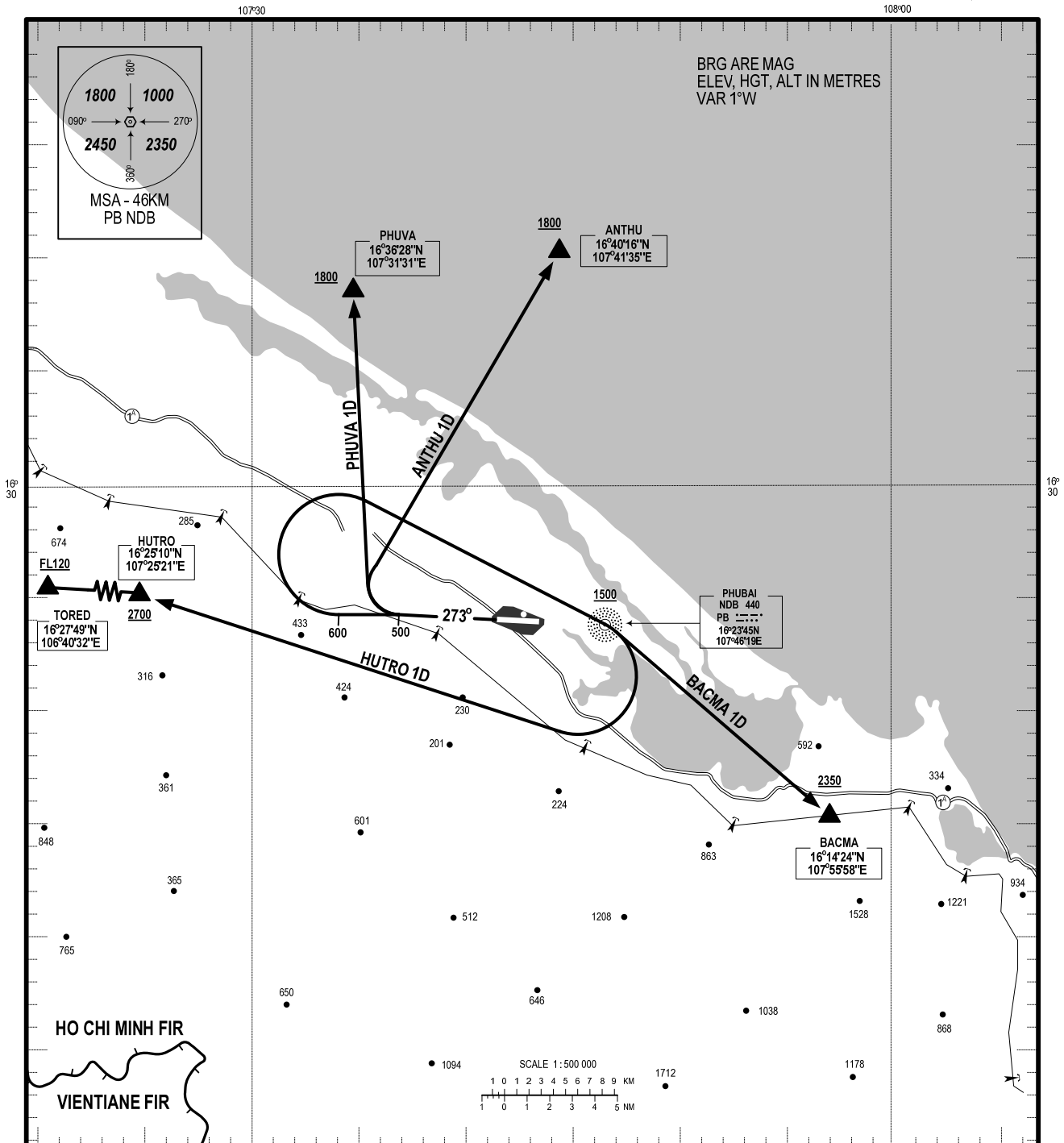
STANDARD DEPARTURE CHART-  
INSTRUMENT (SID) - ICAO

TRANSITION ALTITUDE: 2750 M  
TRANSITION LEVEL: FL100

TWR : 118.8

THUA THIEN HUE/PHU BAI INTL (VVPB)  
RWY 27

PHUVA 1D, ANTHU 1D,  
BACMA 1D, HUTRO 1D



RWY 27

- 1. PHUVA ONE DELTA DEPARTURE (PHUVA 1D):** AFTER DEPARTURE, MAINTAIN RWY HDG UNTIL REACHING 500M, TURN RIGHT TO INTERCEPT W2, REACH 1800M OR ABOVE AT PHUVA. (MINIMUM PDG 7%).
- 2. ANTHU ONE DELTA DEPARTURE (ANTHU 1D):** AFTER DEPARTURE, MAINTAIN RWY HDG UNTIL REACHING 500M, TURN RIGHT TO INTERCEPT W10, REACH 1800M OR ABOVE AT ANTHU. (MINIMUM PDG 7%).
- 3. BACMA ONE DELTA DEPARTURE (BACMA 1D):** AFTER DEPARTURE, MAINTAIN RWY HDG UNTIL REACHING 600M, TURN RIGHT TO PB NDB AT 1500M OR ABOVE, THEN DIRECT TO BACMA, REACH 2350M OR ABOVE AT BACMA. (MINIMUM PDG 7%).
- 4. HUTRO ONE DELTA DEPARTURE (HUTRO 1D):** AFTER DEPARTURE, MAINTAIN RWY HDG UNTIL REACHING 600M, TURN RIGHT TO PB NDB AT 1500M OR ABOVE, THEN TURN RIGHT TO HUTRO, REACH 2700M OR ABOVE AT HUTRO, CONTINUE TO TORED, REACH FL120 OR ABOVE AT TORED. (MINIMUM PDG 7% UNTIL TORED).

CHANGE: CANCELLATION OF VALAN 1D