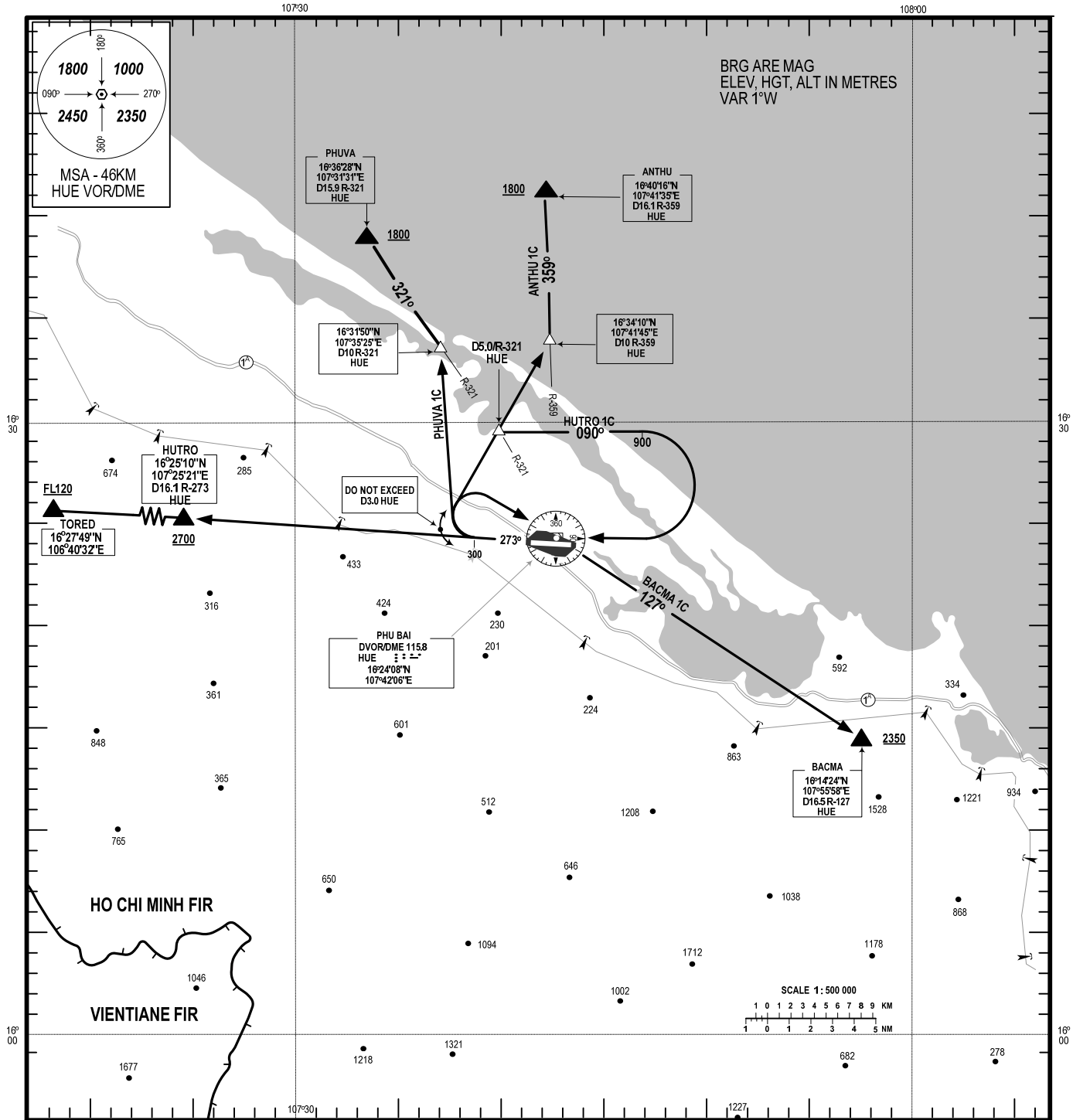


STANDARD DEPARTURE CHART-
INSTRUMENT (SID) - ICAO

TRANSITION ALTITUDE: 2750 M
TRANSITION LEVEL: FL100

TWR : 118.8

THUA THIEN HUE/PHU BAI INTL (VVPB)
RWY 27
PHUVA 1C, ANTHU 1C,
BACMA 1C, HUTRO1C



RWY 27

- 1. PHUVA ONE CHARLIE DEPARTURE (PHUVA 1C):** AFTER DEPARTURE, INTERCEPT R-273 HUE UNTIL REACHING 300M, TURN RIGHT NOT EXCEED 03 HUE DME TO INTERCEPT W2 AT D10.0/R-321 HUE, REACH 1800M OR ABOVE AT PHUVA. (MINIMUM PDG 5% UNTIL REACHING 1800M).
- 2. ANTHU ONE CHARLIE DEPARTURE (ANTHU 1C):** AFTER DEPARTURE, INTERCEPT R-273 HUE UNTIL REACHING 300M, TURN RIGHT NOT EXCEED 03 HUE DME TO INTERCEPT W10 AT D10.0/R-359 HUE, REACH 1800M OR ABOVE AT ANTHU. (MINIMUM PDG 5% UNTIL REACHING 1800M).
- 3. BACMA ONE CHARLIE DEPARTURE (BACMA 1C):** AFTER DEPARTURE, INTERCEPT R-273 HUE UNTIL REACHING 300M, TURN RIGHT NOT EXCEED 03 HUE DME TO HUE AT 1000M OR ABOVE, THEN INTERCEPT W2, REACH 2350M OR ABOVE AT BACMA. (MINIMUM PDG 5% UNTIL REACHING 2350M).
- 4. HUTRO ONE CHARLIE DEPARTURE (HUTRO 1C):** AFTER DEPARTURE, INTERCEPT R-273 HUE UNTIL REACHING 300M, TURN RIGHT NOT EXCEED 03 HUE DME TO D5.0/R-321 HUE, THEN TURN RIGHT 090° UNTIL REACHING 900M TURN RIGHT TO HUE AT 1800M OR ABOVE, THEN TO HUTRO AT 2700M OR ABOVE AT HUTRO, THEN TO TORED AT FL120 OR ABOVE AT TORED. (MINIMUM PDG 5% UNTIL TORED).

CHANGE, CANCELLATION OF VALAN 2C .