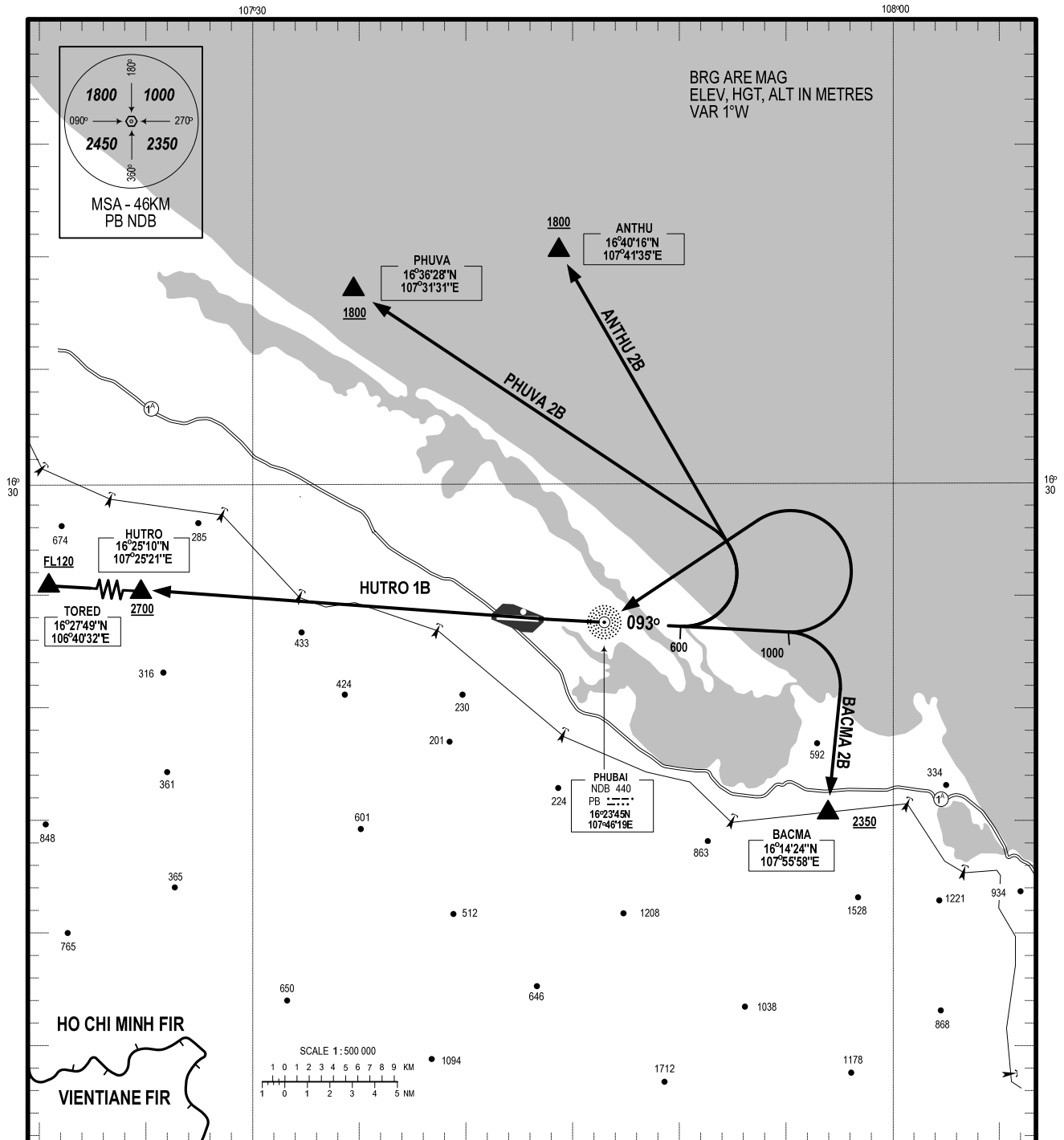


STANDARD DEPARTURE CHART-
INSTRUMENT (SID) - ICAO

TRANSITION ALTITUDE: 2750 M
TRANSITION LEVEL: FL100

TWR : 118.8

THUA THIEN HUE/PHU BAI INTL (VVPB)
RWY 09
PHUVA 2B, ANTHU 2B,
BACMA 2B, HUTRO 1B



RWY 09

- 1. PHUVA TWO BRAVO DEPARTURE (PHUVA 2B):** AFTER DEPARTURE, MAINTAIN RWY HDG UNTIL REACHING 600M, TURN LEFT TO PHUVA, REACH 1800M OR ABOVE AT PHUVA. (MINIMUM PDG 7%).
- 2. ANTHU TWO BRAVO DEPARTURE (ANTHU 2B):** AFTER DEPARTURE, MAINTAIN RWY HDG UNTIL REACHING 600M, TURN LEFT TO ANTHU, REACH 1800M OR ABOVE AT ANTHU. (MINIMUM PDG 7%).
- 3. BACMA TWO BRAVO DEPARTURE (BACMA 2B):** AFTER DEPARTURE, MAINTAIN RWY HDG UNTIL REACHING 1000M, TURN RIGHT TO BACMA, REACH 2350M OR ABOVE. (MINIMUM PDG 7%).
- 4. HUTRO ONE BRAVO DEPARTURE (HUTRO 1B):** AFTER DEPARTURE, MAINTAIN RWY HDG UNTIL REACHING 1000M, TURN LEFT TO PB NDB, THEN TURN RIGHT TO HUTRO, REACH 2700M OR ABOVE AT HUTRO, THEN TO TORED, REACH FL120 OR ABOVE AT TORED. (MINIMUM PDG 7%).

CHANGE: CANCELLATION OF VALAN 2B