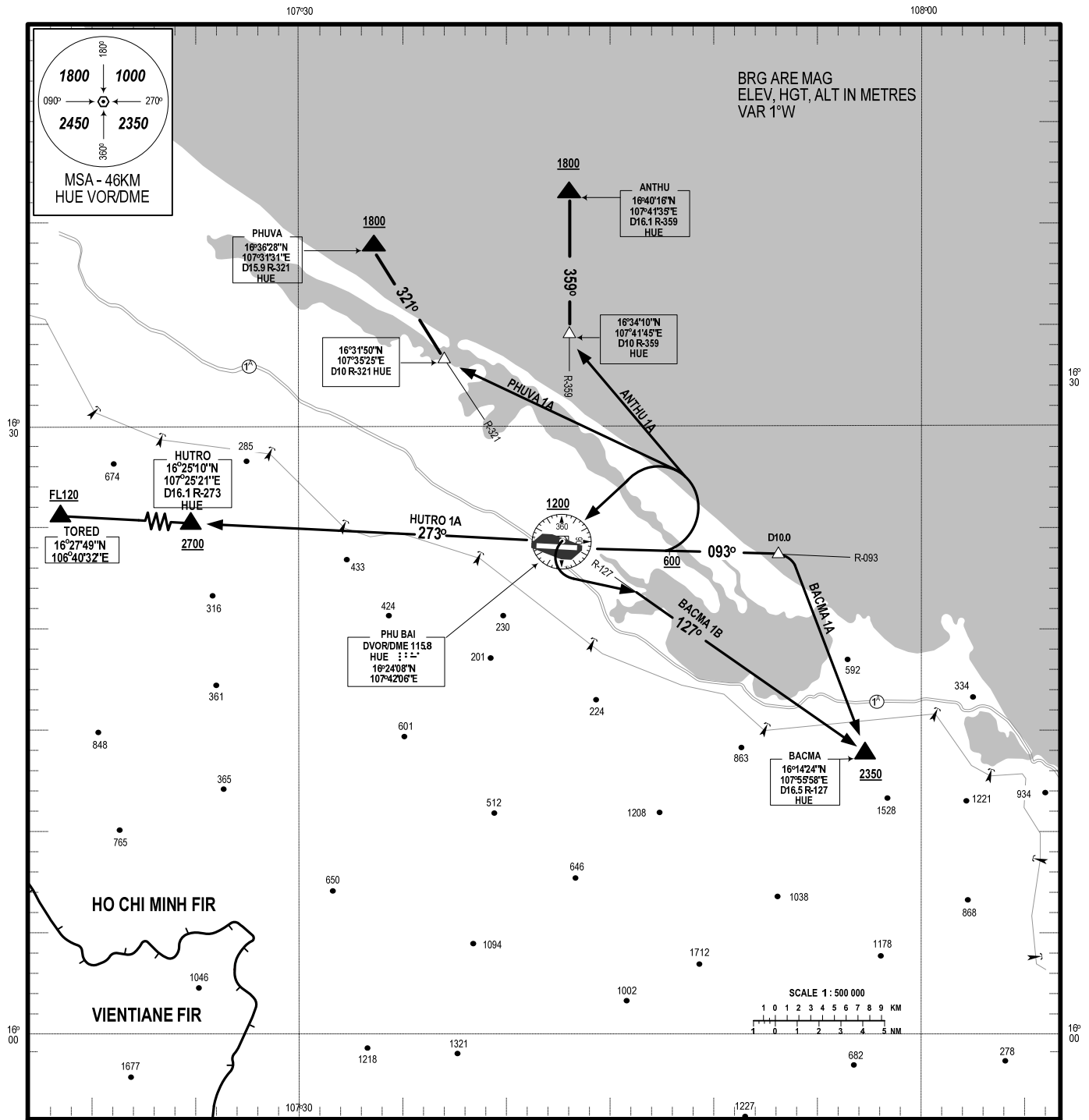


STANDARD DEPARTURE CHART-  
INSTRUMENT (SID) - ICAO

TRANSITION ALTITUDE  
2750 M

TWR : 118.8

THUA THIEN HUE/PHU BAI INTL (VVPB)  
RWY 09  
PHUVA 1A, ANTHU 1A, BACMA 1A,  
BACMA 1B, HUTRO 1A



**RWY 09**

- 1. PHUVA ONE ALPHA DEPARTURE (PHUVA 1A):** AFTER DEPARTURE, INTERCEPT R-093 HUE UNTIL REACHING 600M OR ABOVE, TURN LEFT TO INTERCEPT W2 AT D10.0 R-321 HUE, REACH 1800M OR ABOVE AT PHUVA. (MINIMUM PDG 7% UNTIL REACHING 1800M).
- 2. ANTHU ONE ALPHA DEPARTURE (ANTHU 1A):** AFTER DEPARTURE, INTERCEPT R-093 HUE UNTIL REACHING 600M OR ABOVE, TURN LEFT TO INTERCEPT W10 AT D10.0 R-359 HUE, REACH 1800M OR ABOVE AT ANTHU. (MINIMUM PDG 7% UNTIL REACHING 1800M).
- 3. BACMA ONE ALPHA DEPARTURE (BACMA 1A):** AFTER DEPARTURE, INTERCEPT R-093 HUE UNTIL D10.0 HUE, TURN RIGHT REACH 2350M OR ABOVE AT BACMA, INTERCEPT W2 TO DAN. (MINIMUM PDG 7% UNTIL REACHING 2350M).
- 4. BACMA ONE BRAVO DEPARTURE (BACMA 1B):** AFTER DEPARTURE, INTERCEPT R-093 HUE, UNTIL REACHING 600M OR ABOVE, TURN LEFT TO HUE AT 1200M OR ABOVE THEN INTERCEPT R-127 HUE TO BACMA, REACH 2350M OR ABOVE AT BACMA. (MINIMUM PDG 7% UNTIL REACHING 2350M).
- 5. HUTRO ONE ALPHA DEPARTURE (HUTRO 1A):** AFTER DEPARTURE, INTERCEPT R-093 HUE UNTIL REACHING 600M OR ABOVE, TURN LEFT TO HUE AT 1200M OR ABOVE THEN INTERCEPT R-273 HUE TO HUTRO, REACH 2700M OR ABOVE AT HUTRO, REACH FL120 OR ABOVE AT TORED. (MINIMUM PDG 7% UNTIL REACHING 2700M).

CHANGE: CANCELLATION OF VALAN 2A