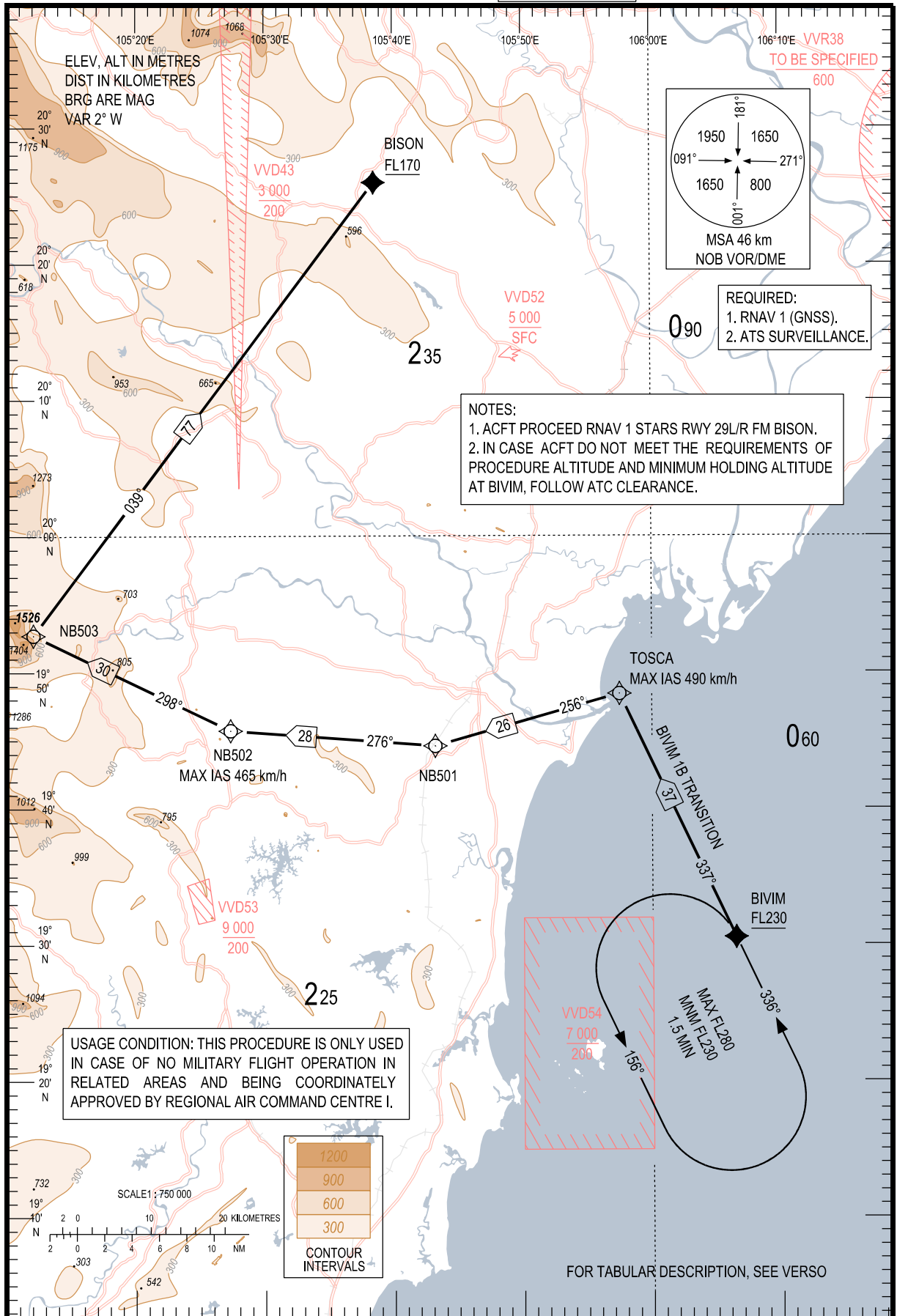


STANDARD ARRIVAL CHART-
INSTRUMENT (STAR) - ICAO

TRANSITION ALTITUDE
2750

TMC	125.1 PRI
ARR	126.575 SRY
ARR	121.0 PRI
TWR	120.075 SRY
TWR	118.4 PRI
TWR	118.9 SRY

HA NOI/NOI BAI INTL (VVNB)
RNAV RWY 29L/R
BIVIM 1B TRANSITION



CHANGE: NEW CHART.