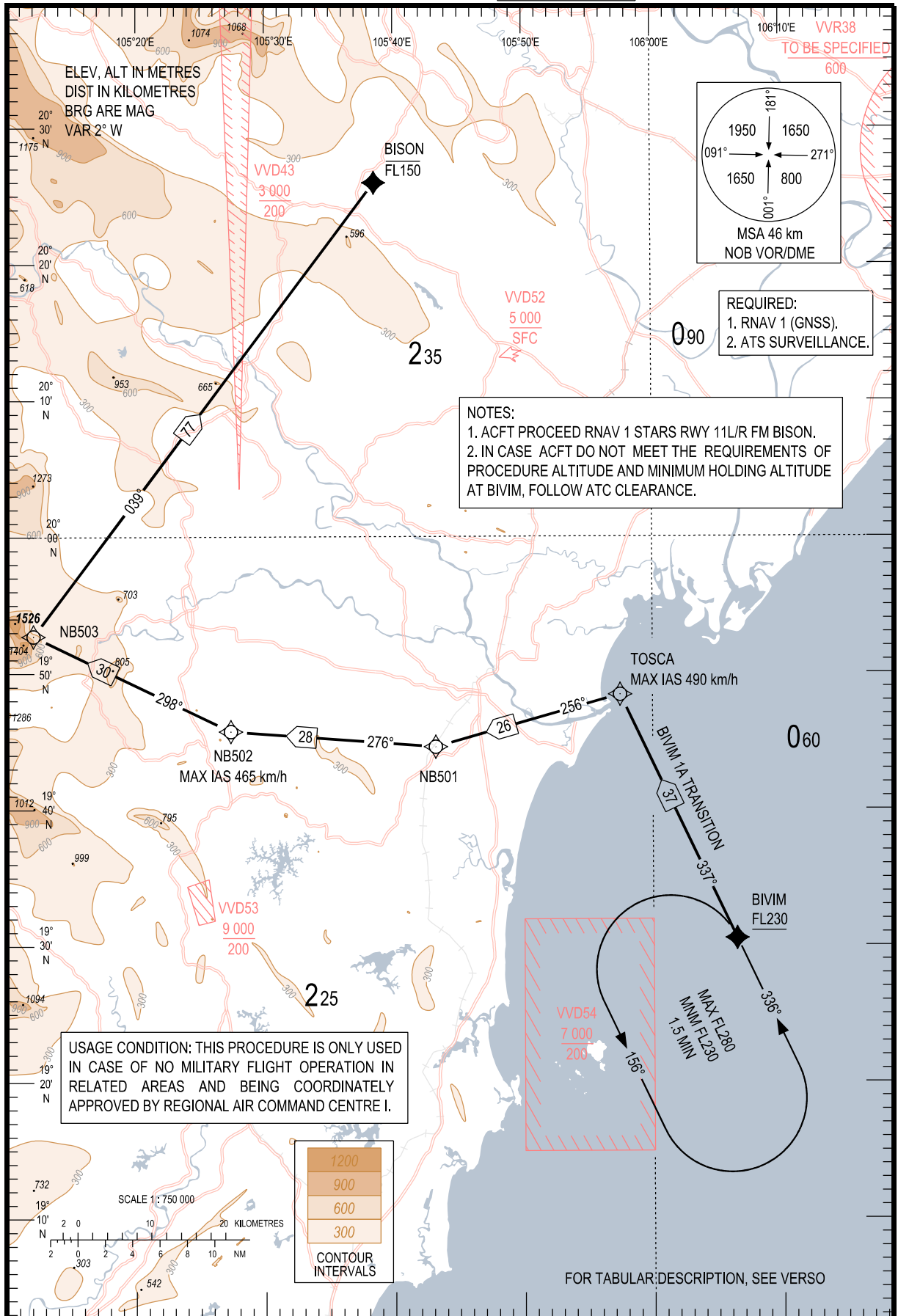


**STANDARD ARRIVAL CHART-
INSTRUMENT (STAR) - ICAO**

TRANSITION ALTITUDE
2750

TMC	125.1 PRI
ARR	126.575 SRY
	121.0 PRI
TWR	120.075 SRY
	118.4 PRI
	118.9 SRY

**HA NOI/NOI BAI INTL (VVNB)
RNAV RWY 11L/R
BIVIM 1A TRANSITION**



CHANGE: NEW CHART.