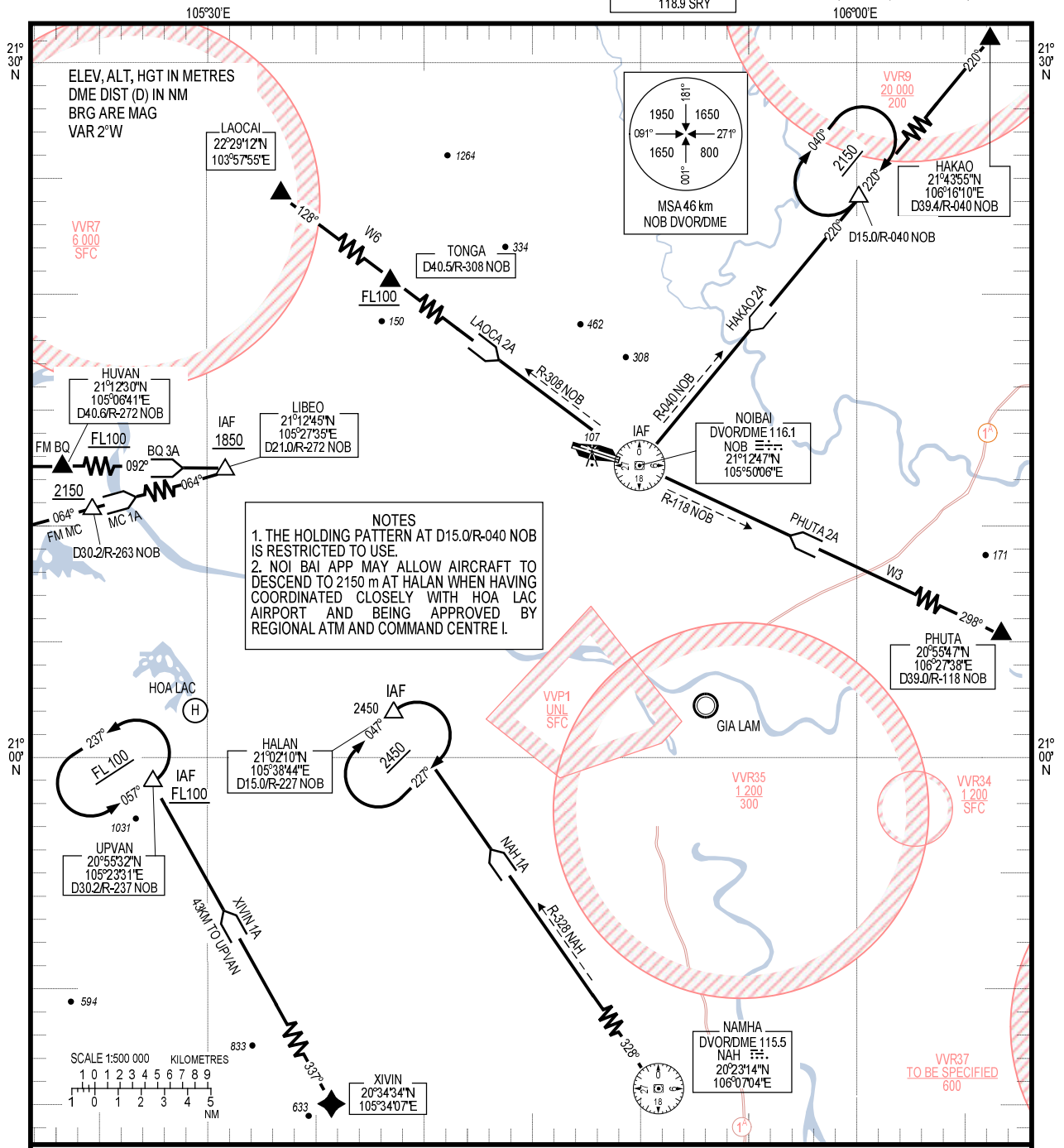


STANDARD ARRIVAL CHART -
INSTRUMENT (STAR) - ICAO

TRANSITION ALTITUDE
2750 m

TMC: 125.1 PRI
126.575 SRY
ARR: 121.0 PRI
120.075 SRY
TWR: 118.4 PRI
118.9 SRY

HA NOI/NOI BAI INTL (VVNB)
RWY 11L/R
HAKAO 2A, NAH 1A, MC 1A
LAOCA 2A, BQ 3A, PHUTA 2A, XIVIN 1A



NOTES
 1. THE HOLDING PATTERN AT D15.0/R-040 NOB IS RESTRICTED TO USE.
 2. NOI BAI APP MAY ALLOW AIRCRAFT TO DESCEND TO 2150 m AT HALAN WHEN HAVING COORDINATED CLOSELY WITH HOA LAC AIRPORT AND BEING APPROVED BY REGIONAL ATM AND COMMAND CENTRE I.

CHANGES: VAR, MAG BRG, POSITION INFO OF SIGNIFICANT POINTS, PROCEDURE TEXTUAL DESCRIPTION, ADDN OF RESTRICTED AREAS.

- RWY 11L/R
- HAKAO TWO ALPHA ARRIVAL (HAKAO 2A): FROM HAKAO FLY ON TRACK 220° TO IAF AT NOB AT 2150 m.
 - NAMHA ONE ALPHA ARRIVAL (NAH 1A): FROM NAH FLY ON R-328 NAH TO IAF AT HALAN (D15.0/R-227 NOB) AT 2450 m.
 - XIVIN ONE ALPHA ARRIVAL (XIVIN 1A): FROM XIVIN FLY ON TRACK 337° TO IAF AT UPVAN (D30.2/R-237 NOB) AT FL100 OR ABOVE.
 - MOCCHAU ONE ALPHA ARRIVAL (MC 1A): FROM MC FLY ON TRACK 064° TO D30.2/R-263 NOB AT 2150 m OR ABOVE, CONTINUE TO IAF AT LIBEO (D21.0/R-272 NOB) AT 1850 m OR ABOVE.
 - LAOCA TWO ALPHA ARRIVAL (LAOCA 2A): FLY ON W6 (R-308 NOB) TO TONGA (D40.5/R-308 NOB) AT FL100 OR ABOVE, CONTINUE ON R-308 NOB TO IAF AT NOB AT 1850 m OR ABOVE.
 - NASAN THREE ALPHA ARRIVAL (BQ 3A): FROM BQ FLY ON W21 (R-272 NOB) TO HUVAN AT FL100 OR ABOVE, CONTINUE ON TRACK 092° (R-272 NOB) TO IAF AT LIBEO (D21.0/R-272 NOB) AT 1850 m OR ABOVE.
 - PHUTA TWO ALPHA ARRIVAL (PHUTA 2A): FROM PHUTA FLY ON W3 (R-118 NOB), TRACK 298° TO IAF AT NOB AT 1500 m OR ABOVE. (NOTE: ONLY USED IN CASE VVNB AND VVCI ARE ALTERNATE AERODROMES FOR EACH OTHER).