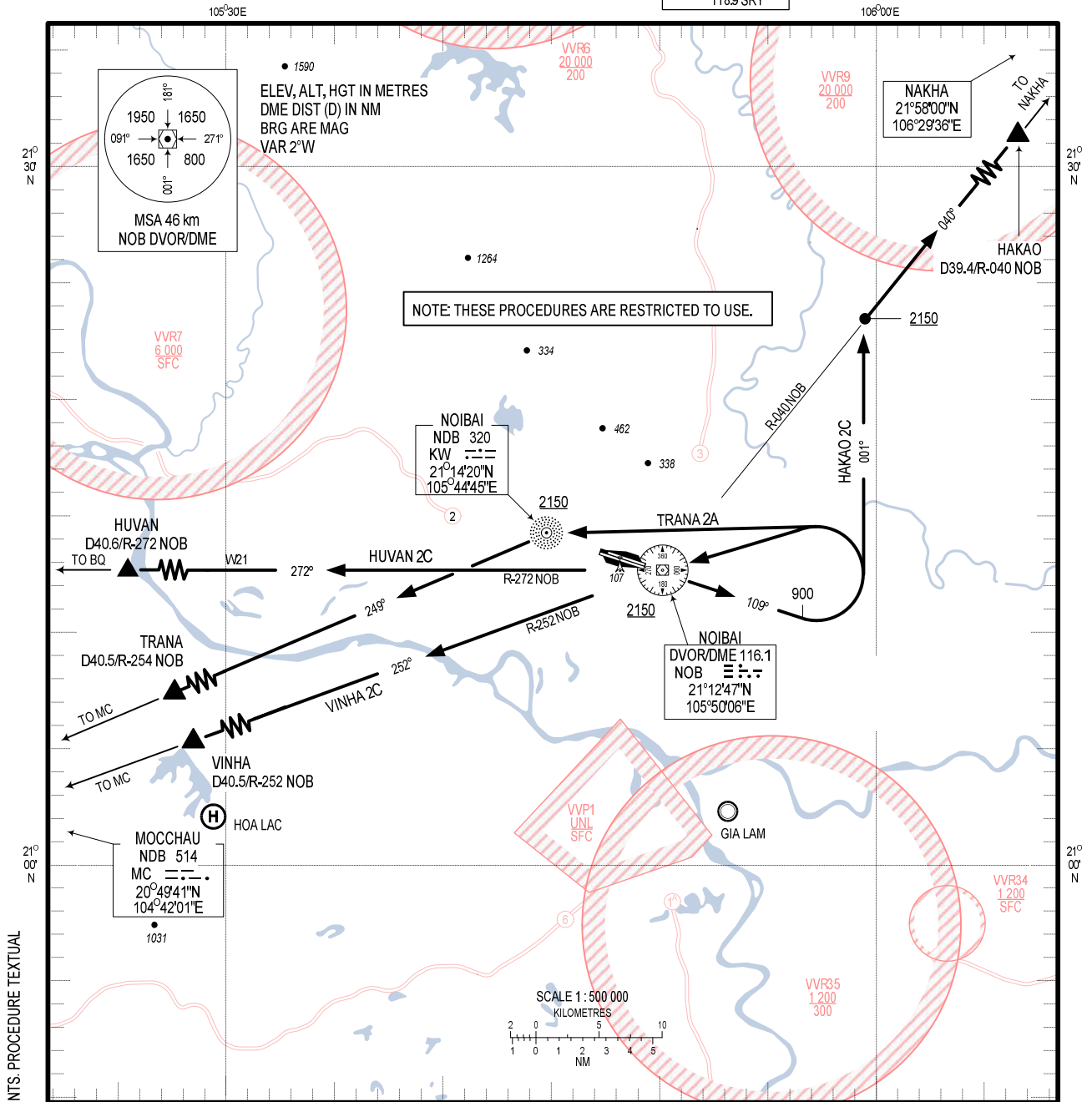


**STANDARD DEPARTURE CHART-  
INSTRUMENT (SID) - ICAO**

TRANSITION ALTITUDE  
2750 m

TMC: 125.1 PRI  
126.575 SRY  
ARR: 121.0 PRI  
120.075 SRY  
TWR: 118.4 PRI  
118.9 SRY

**HA NOI/NOI BAI INTL (VVNB)  
RWY 11L/R  
HAKAO 2C, VINHA 2C,  
TRANA 2A, HUVAN 2C**



CHANGES: VAR. MAG BRG. POSITION INFO OF SIGNIFICANT POINTS. PROCEDURE TEXTUAL DESCRIPTION. ADDN OF RESTRICTED AREAS.

**RWY 11L/R**

1. HAKAO TWO CHARLIE DEPARTURE (HAKAO 2C): AFTER DEPARTURE, MAINTAIN RWY HDG TO 900 m, TURN LEFT ON TRACK 001° TO INTERCEPT R474 ON R-040 NOB AT 2150 m OR ABOVE TO HAKAO, CONTINUE TO NAKHA.
2. VINHA TWO CHARLIE DEPARTURE (VINHA 2C): AFTER DEPARTURE, MAINTAIN RWY HDG TO 900 m, TURN LEFT TO NOB DVOR/DME AT 2150 m OR ABOVE, INTERCEPT R-252 NOB (R474/B465) TO VINHA, CONTINUE TO MC NDB.
3. TRANA TWO ALPHA DEPARTURE (TRANA 2A): AFTER DEPARTURE, MAINTAIN RWY HDG TO 900 m, TURN LEFT TO KW NDB AT 2150 m OR ABOVE, TURN LEFT ON TRACK 249° TO TRANA, CONTINUE TO MC NDB.
4. HUVAN TWO CHARLIE DEPARTURE (HUVAN 2C): AFTER DEPARTURE, MAINTAIN RWY HDG TO 900 m, TURN LEFT TO NOB DVOR/DME AT 2150 m OR ABOVE, FOLLOW W21 TO HUVAN, CONTINUE TO BQ NDB.

**NOTE:**

1. HAKAO 2C IS ONLY USED IN CASE OF NO FLIGHT OPERATIONS AT KEP AERODROME AND BEING APPROVED BY REGIONAL ATM AND COMMAND CENTRE I.
2. VINHA 2C, TRANA 2A, HUVAN 2C ARE ONLY USED IN CASE OF NO REVERSAL APPROACH PROCEEDING AT KEP AERODROME AND BEING APPROVED BY REGIONAL ATM AND COMMAND CENTRE I.