

AERODROME CHART - ICAO

21°13'18"N
105°48'20"E

AD ELEV 13M

TWR: 118.4
GND: 121.9

HA NOI/NOI BAI INTL (VVNB)

RWY	DIRECTION (TRUE)	THR WGS-84	BEARING STRENGTH
11L	107°	21°13'31"N 105°47'33"E	PCN 98/R/B/W/T
29R	287°	21°13'00"N 105°49'19"E	
11R	107°	21°13'29"N 105°47'11"E	PCN 99/R/B/W/T
29L	287°	21°12'53"N 105°49'17"E	

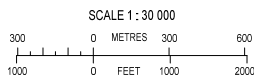
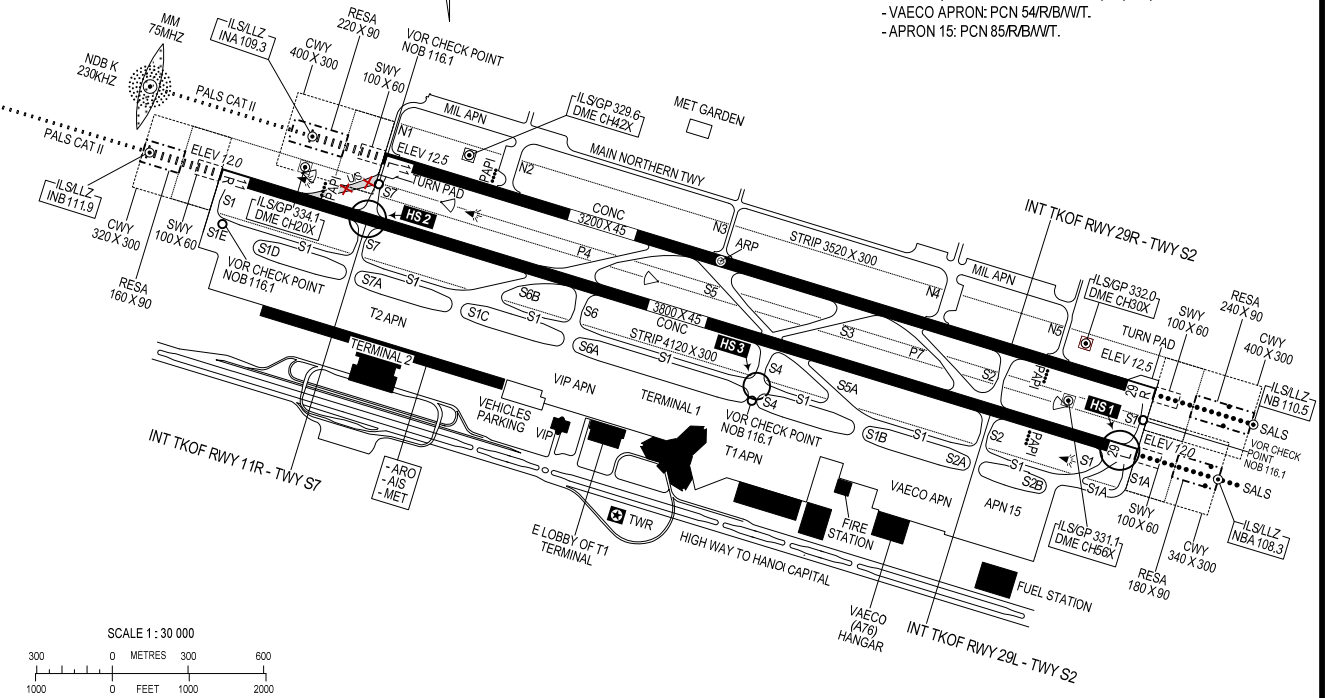
ELEVATIONS AND DIMENSIONS IN METRES
BEARINGS ARE MAGNETIC



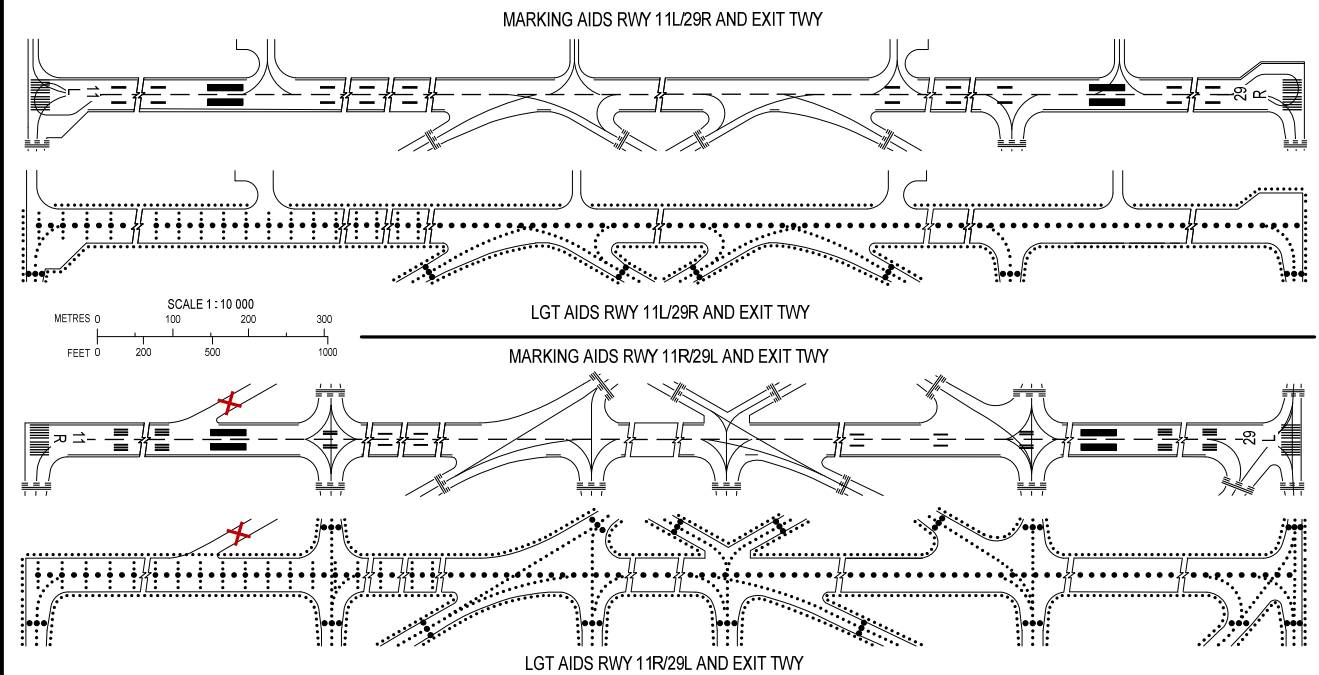
TWYs WIDTH:
- MAIN NORTHERN, N1, N2, N3, N4, N5: 14M.
- S1, S1A, S2, S3, P4, S5, P7, S6, S6A, S7: 23M.
- S1B, S1C, S1D, S7A: 38M.
- S1E, S2A, S2B: 30M.
- S4, S5A: 27M.
- S6B: 28M.

TWYs BEARING STRENGTH:
- MAIN NORTHERN, N1, N2, N3, N4, N5, S2, S6A, S7: PCN 54/R/C/W/U.
- S1, S1B, S1C, S1D, S1E, S5A, S7A: PCN 65/R/B/W/T.
- S1A, P4, P7: PCN 95/R/B/W/T.
- S2A, S2B: PCN 85/R/B/W/T.
- S3, S5: PCN 96/R/B/W/T.
- S4: PCN 60-70/R/C/W/U.
- S6, S6B: PCN 97/R/B/W/T.

APRON BEARING STRENGTH:
- APRON (INCLUDING TERMINAL T1, T2, VIP): PCN 66/R/B/W/T.
- VAECO APRON: PCN 54/R/B/W/T.
- APRON 15: PCN 85/R/B/W/T.



LGT AIDS THR RWY 11L/29R		LGT AIDS THR RWY 11R/29L		LEGEND	



CHANGES: VAR: ELEV OF THR 11L, 29R, 11R, 29L (ROUNDED DOC 10066); PAVEMENT AND PCN OF RWY 11L/29R AND TWYS: APCH LGTS, CL LGTS, TDZ LGTS OF RWY 11L/29R; EDGE AND CL LGTS OF TWY, STOP BARS, RWY-HOLDING PSN, MARKING OR TWYS; RVR OF RWY 11L/29R; RESA OF RWY 11L/29R; VOR CHECK POINT.