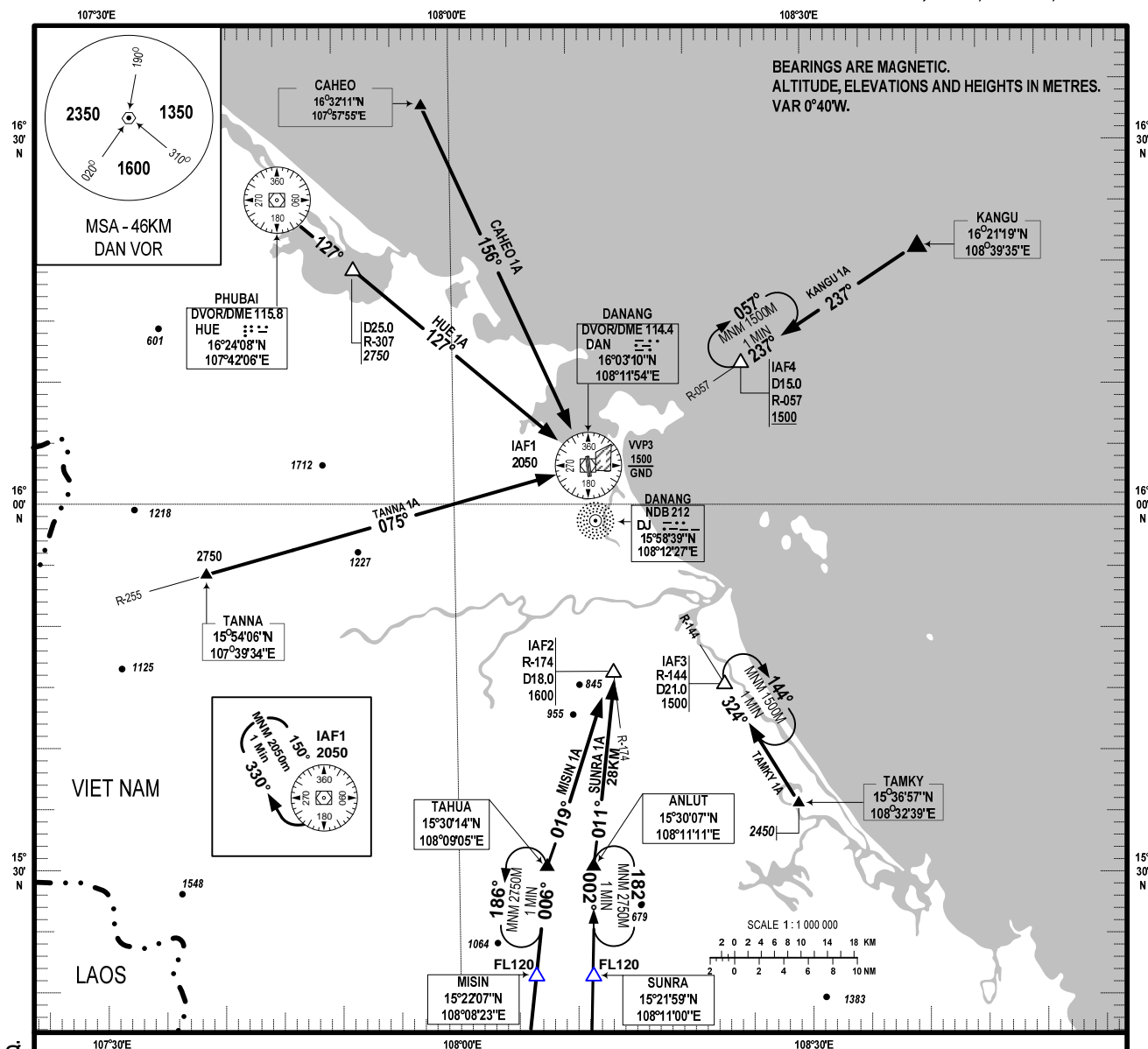


**STANDARD ARRIVAL CHART -  
INSTRUMENT (STAR) - ICAO**

**TRANSITION LEVEL: FL100  
TRANSITION ALT: 2750M**

**APP: 120.45 PRI  
APP: 125.45 SRY  
TWR: 118.35 PRI  
TWR: 118.05 SRY**

**DA NANG/DA NANG INTL (VVDN)  
RWY 35L/R**  
MISIN 1A, TAMKY 1A, KANGU 1A,  
CAHEO 1A, HUE 1A, TANNA 1A, SUNRA 1A.



CHANGES: ADDITION OF SUNRA 1A, CANCELLATION OF SAMBO 1A, VHF FREQ.

**RWY 35L/R**

- MISIN ONE ALPHA ARRIVAL (MISIN 1A):** AFTER MISIN FL120, PROCEED ON TRACK 006°, DESCEND TO 2750M AT TAHUA, PASSING TAHUA PROCEED ON TRACK 019°, DESCEND TO 1600M AT IAF2 (D18.0/R-174 DAN) FOR APPROACH PROCEDURES ILS Y 35L OR VOR 35L. (THIS PROCEDURE IS USED FOR APPROACH RWY 35L ONLY)
- TAMKY ONE ALPHA ARRIVAL (TAMKY 1A):** PASSING TAMKY (2450M) MAINTAIN TRACK 324° (R-144 DAN), DESCEND TO 1500M AT IAF3 (D21.0/R-144 DAN) FOR APPROACH PROCEDURES ILS Y 35L/R OR VOR 35L/R.
- KANGU ONE ALPHA ARRIVAL (KANGU 1A):** PASSING KANGU PROCEED ON TRACK 237° (R-057 DAN), DESCEND TO 1500M OR ABOVE AT IAF4 (D15.0/R-057 DAN) FOR APPROACH PROCEDURES ILS Y 35L/R OR ARC 12 DME DAN FOR VOR 35L/R.
- CAHEO ONE ALPHA ARRIVAL (CAHEO 1A):** PASSING CAHEO PROCEED ON TRACK 156° (R-336 DAN), DESCEND TO 2050M AT DAN DVOR/DME FOR APPROACH PROCEDURES ILS Y 35L/R OR VOR 35L/R.
- HUE ONE ALPHA ARRIVAL (HUE 1A):** PASSING HUE PROCEED ON TRACK 127° TO D25.0/R-307 DAN (AT 2750M OR ABOVE) DESCEND TO 2050M AT DAN DVOR/DME FOR APPROACH PROCEDURES ILS Y 35L/R OR VOR 35L/R.
- TANNA ONE ALPHA ARRIVAL (TANNA 1A):** PASSING TANNA (AT 2750M OR ABOVE) CONTINUE ON TRACK R-255 DAN, DESCEND TO 2050M AT DAN DVOR/DME FOR APPROACH PROCEDURES ILS Y 35L/R OR VOR 35L/R.
- SUNRA ONE ALPHA ARRIVAL (SUNRA 1A):** AFTER SUNRA FL120, PROCEED ON TRACK 002°, DESCEND TO 2750M AT ANLUT, PASSING ANLUT PROCEED ON TRACK 011°, DESCEND TO 1600M AT IAF2 (D18.0/R-174 DAN) FOR APPROACH PROCEDURES ILS Y 35L OR VOR 35L. (THIS PROCEDURE IS USED FOR APPROACH RWY 35L ONLY).