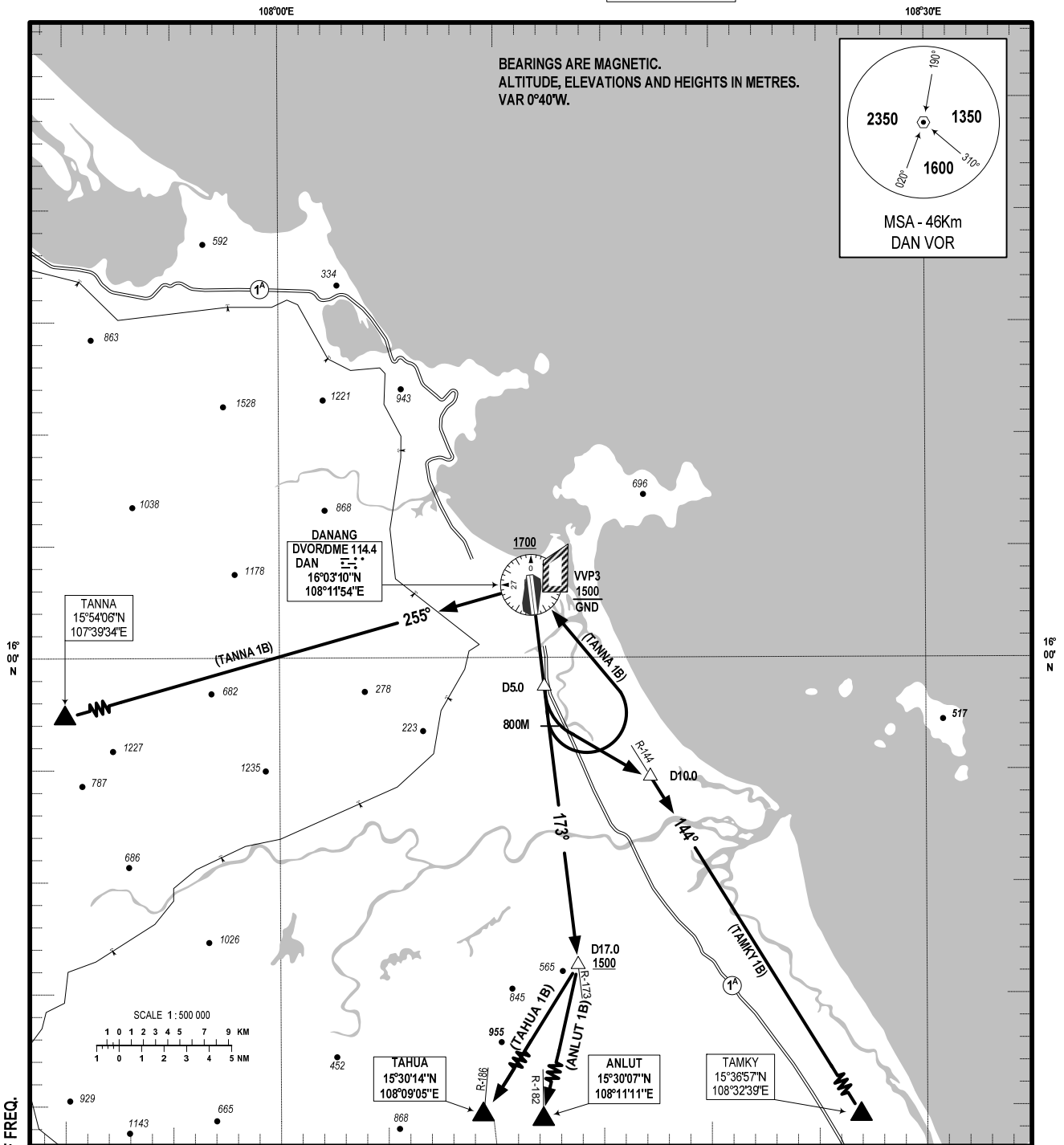


STANDARD DEPARTURE CHART -
INSTRUMENT (SID) - ICAO

AERODROME ELEV: 9M
TRANSITION ALT: 2750M

APP: 120.45 PRI
APP: 125.45 SRY
TWR: 118.35 PRI
TWR: 118.05 SRY

DA NANG/DA NANG INTL (VVDN)
RWY 17L/R
TAMKY 1B, TAHUA 1B,
TANNA 1B, ANLUT 1B.



CHANGES: ADDITION OF ANLUT 1B; VHF FREQ.

RWY 17L/R.

- 1. TAMKY ONE BRAVO DEPARTURE (TAMKY 1B):** AFT TKOF, JOIN R-173 DAN TO D5.0 DAN, TURN LEFT TO INTERCEPT R-144 DAN AT D10.0, CONTINUE TO TAMKY. (MNM PDG 4.1%).
- 2. TAHUA ONE BRAVO DEPARTURE (TAHUA 1B):** AFT TKOF, JOIN R-173 DAN TO D17.0 DAN AT 1500M OR ABOVE, TURN RIGHT TO INTERCEPT R-186 DAN TO TAHUA. (MNM PDG 5%).
- 3. TANNA ONE BRAVO DEPARTURE (TANNA 1B):** AFT TKOF, JOIN R-173 DAN REACHING 800M, TURN LEFT TO DAN REACHING 1700M OR ABOVE AT DAN, INTERCEPT R-255 DAN TO TANNA. (MNM PDG 5%).
- 4. ANLUT ONE BRAVO DEPARTURE (ANLUT 1B):** AFT TKOF, JOIN R-173 DAN TO D17.0 DAN AT 1500M OR ABOVE, TURN RIGHT TO INTERCEPT R-182 DAN TO ANLUT. (MNM PDG 5%).