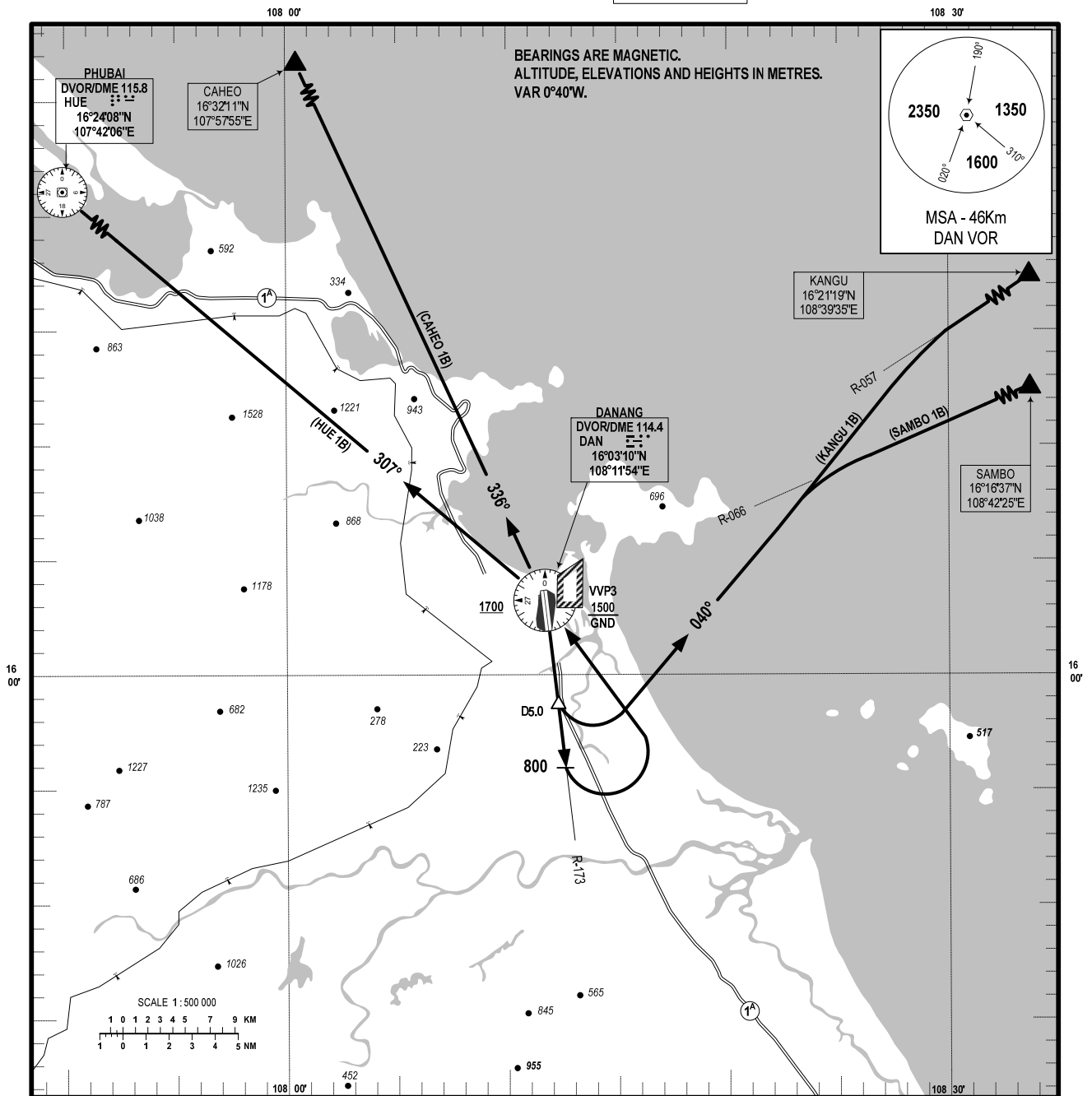


**STANDARD DEPARTURE CHART -
INSTRUMENT (SID) - ICAO**

TRANSITION ALT: 2750M

**APP: 120.45 PRI
APP: 125.45 SRY
TWR: 118.35 PRI
TWR: 118.05 SRY**

**DA NANG/DA NANG INTL (VVDN)
RWY 17L/R
HUE 1B, CAHEO 1B,
KANGU 1B, SAMBO 1B**



RWY 17L/R. (MNM PDG 5%)

- 1. HUE ONE BRAVO DEPARTURE (HUE 1B):** AFTER DEPARTURE, JOIN R-173 DAN REACHING 800M TURN LEFT TO DAN DVOR/DME REACHING 1700M OR ABOVE AT DAN, THEN INTERCEPT R-307 DAN TO HUE.
- 2. CAHEO ONE BRAVO DEPARTURE (CAHEO 1B):** AFTER DEPARTURE, JOIN R-173 DAN REACHING 800M TURN LEFT TO DAN DVOR/DME REACHING 1700M OR ABOVE AT DAN, THEN INTERCEPT R-336 DAN TO CAHEO.
- 3. KANGU ONE BRAVO DEPARTURE (KANGU 1B):** AFTER DEPARTURE, JOIN R-173 TO D5.0 DAN TURN LEFT ON TRACK 040°, CONTINUE CLIMBING TO INTERCEPT R-057 DAN TO KANGU.
- 4. SAMBO ONE BRAVO DEPARTURE (SAMBO 1B):** AFTER DEPARTURE, JOIN R-173 TO D5.0 DAN TURN LEFT ON TRACK 040°, CONTINUE CLIMBING TO INTERCEPT R-066 DAN TO SAMBO.

CHANGE: VHF FREQ.