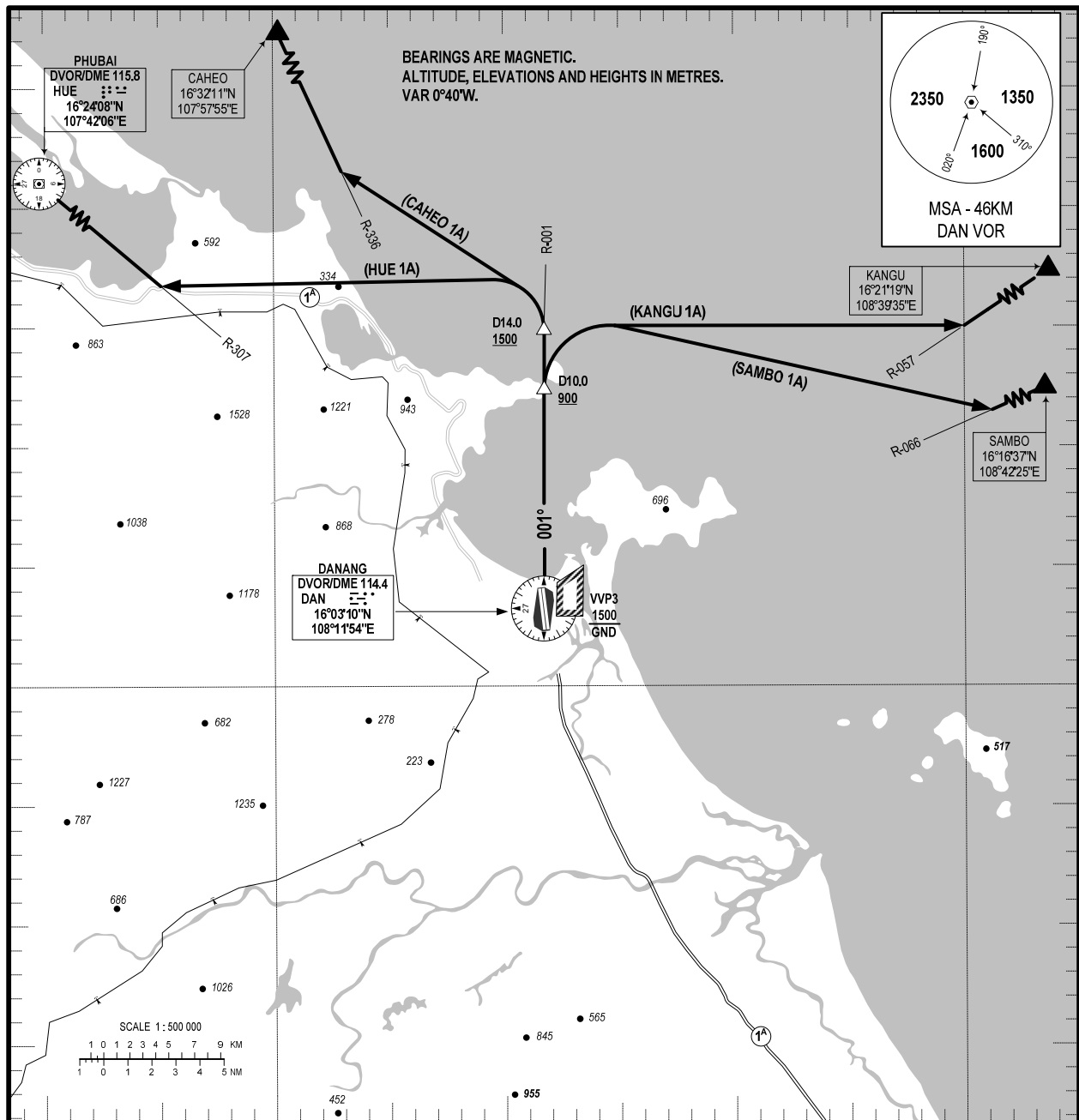


**STANDARD DEPARTURE CHART -
INSTRUMENT (SID) - ICAO**

TRANSITION ALT: 2750M

APP: 120.45 PRI
APP: 125.45 SRY
TWR: 118.35 PRI
TWR: 118.05 SRY

DA NANG/DA NANG INTL (VVDN)
RWY 35L/R
HUE 1A, CAHEO 1A,
KANGU 1A, SAMBO 1A



RWY 35L/R. (MNM PDG 5%)

- 1. HUE ONE ALPHA DEPARTURE (HUE 1A):** AFTER DEPARTURE, JOIN R-001 DAN, REACH TO 1500M OR ABOVE AT D14.0, TURN LEFT, CONTINUE CLIMBING TO INTERCEPT R-307 TO HUE.
- 2. CAHEO ONE ALPHA DEPARTURE (CAHEO 1A):** AFTER DEPARTURE, JOIN R-001 DAN, CLIMB TO 1500M OR ABOVE AT D14.0 DAN, TURN LEFT, CONTINUE CLIMBING TO INTERCEPT R-336 TO CAHEO.
- 3. KANGU ONE ALPHA DEPARTURE (KANGU 1A):** AFTER DEPARTURE, JOIN R-001 DAN, CLIMB TO 900M OR ABOVE AT D10.0 DAN, TURN RIGHT, CONTINUE CLIMBING TO INTERCEPT R-057 TO KANGU.
- 4. SAMBO ONE ALPHA DEPARTURE (SAMBO 1A):** AFTER DEPARTURE, JOIN R-001 DAN, CLIMB TO 900M OR ABOVE AT D10.0 DAN, TURN RIGHT, CONTINUE CLIMBING TO INTERCEPT R-066 TO SAMBO.

CHANGE: VHF FREQ.