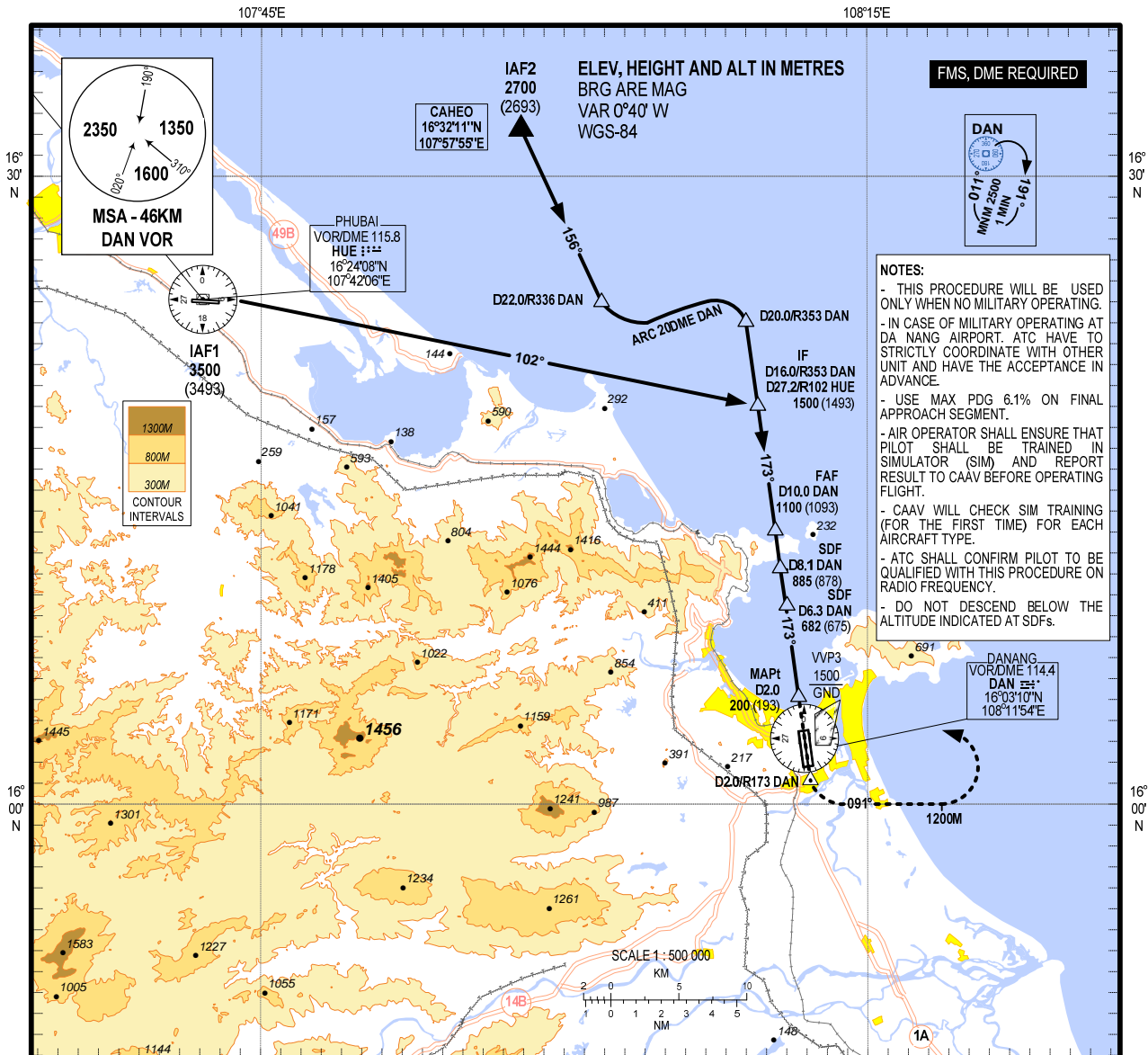


**INSTRUMENT  
APPROACH  
CHART - ICAO**

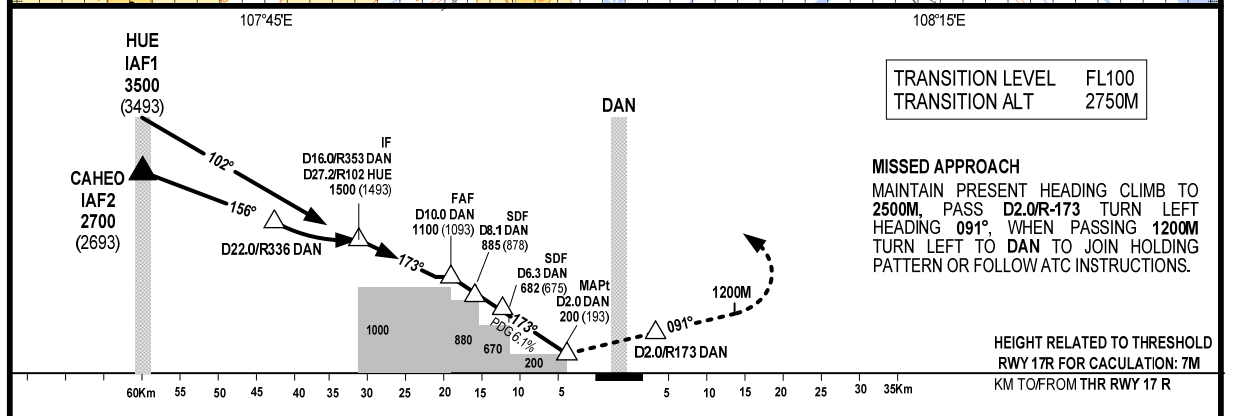
**AERODROME ELEV 9M**  
HEIGHTS RELATED TO  
THR RWY 17R - ELEV 6.8M

APP 120.45 PRI  
125.45 SRY  
TWR 118.35 PRI  
118.05 SRY

**DA NANG/DA NANG INTL (VVDN)**  
**VOR Z RWY 17R**



- NOTES:**
- THIS PROCEDURE WILL BE USED ONLY WHEN NO MILITARY OPERATING.
  - IN CASE OF MILITARY OPERATING AT DA NANG AIRPORT, ATC HAVE TO STRICTLY COORDINATE WITH OTHER UNIT AND HAVE THE ACCEPTANCE IN ADVANCE.
  - USE MAX PDG 6.1% ON FINAL APPROACH SEGMENT.
  - AIR OPERATOR SHALL ENSURE THAT PILOT SHALL BE TRAINED IN SIMULATOR (SIM) AND REPORT RESULT TO CAAV BEFORE OPERATING FLIGHT.
  - CAAV WILL CHECK SIM TRAINING (FOR THE FIRST TIME) FOR EACH AIRCRAFT TYPE.
  - ATC SHALL CONFIRM PILOT TO BE QUALIFIED WITH THIS PROCEDURE ON RADIO FREQUENCY.
  - DO NOT DESCEND BELOW THE ALTITUDE INDICATED AT SDFs.



TRANSITION LEVEL FL100  
TRANSITION ALT 2750M

**MISSED APPROACH**  
MAINTAIN PRESENT HEADING CLIMB TO 2500M, PASS D2.0/R-173 TURN LEFT HEADING 091°, WHEN PASSING 1200M TURN LEFT TO DAN TO JOIN HOLDING PATTERN OR FOLLOW ATC INSTRUCTIONS.

HEIGHT RELATED TO THRESHOLD RWY 17R FOR CALCULATION: 7M  
KM TO/FROM THR RWY 17 R

OCA/H	A	B	C	D	FAF - MAPT 8NM (14816M)					
STRAIGHT-IN APPROACH	200 (193)				DME	10.0	8.1	6.3	4.0	2.0
CIRCLING	480 (471)		680 (671)	NA	HEIGHTS	1093	878	675	415	193

CIRCLING IS ONLY USE IN THE EAST OF RWY  
NA: NOT AUTHORIZED

CHANGE NOTES: