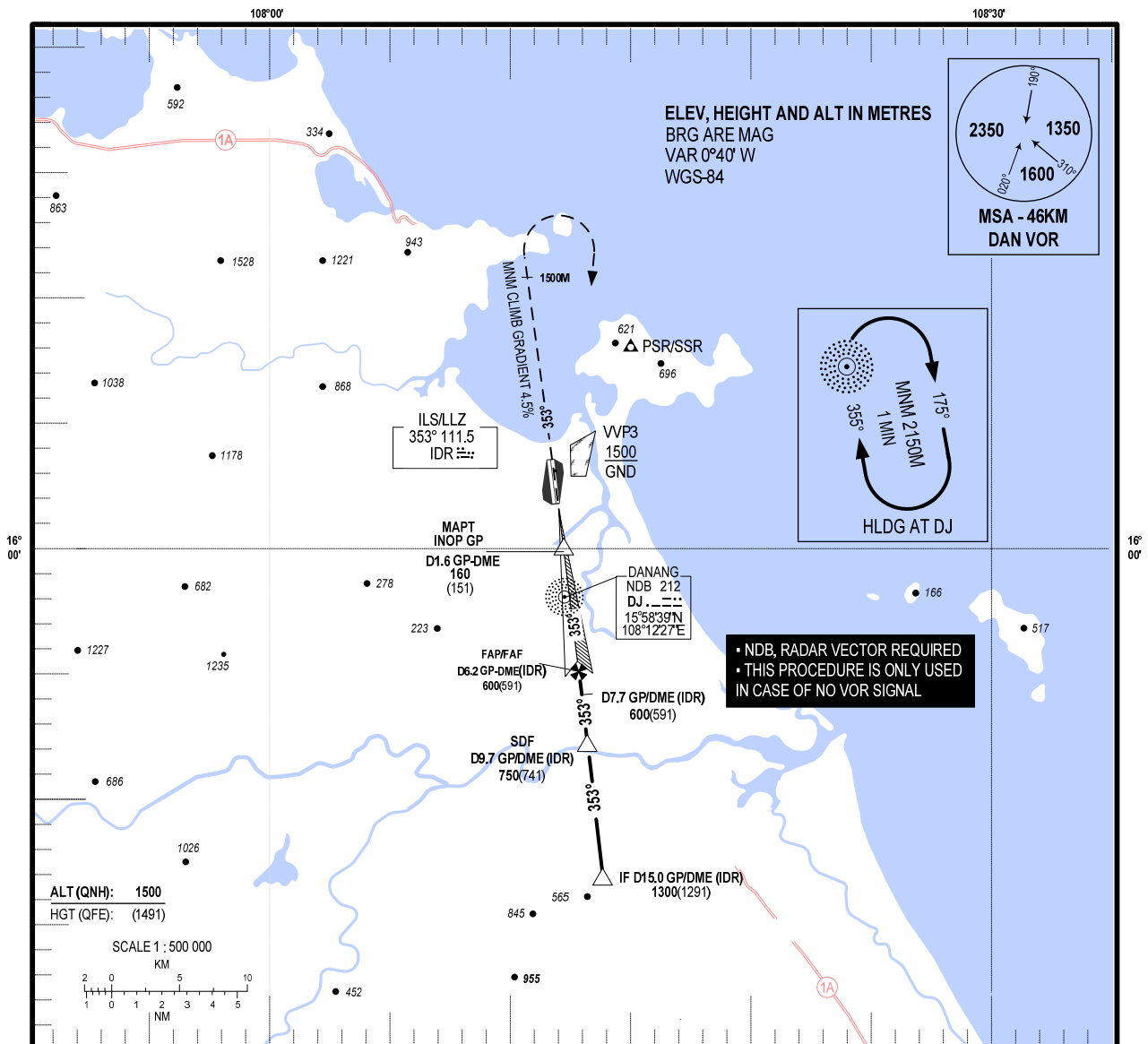


**INSTRUMENT  
APPROACH  
CHART - ICAO**

**AERODROME ELEV 9M**  
HEIGHTS RELATED TO  
THR RWY 35R - ELEV 8.7M

APP 120.45 PRI  
125.45 SRY  
TWR 118.35 PRI  
118.05 SRY

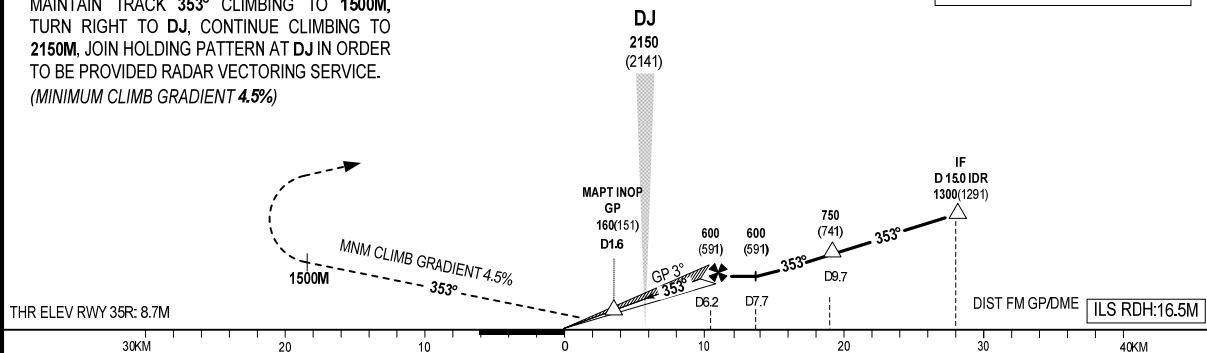
**DA NANG/DA NANG INTL (VVDN)  
ILS X RWY 35R**



**MISSED APPROACH**

MAINTAIN TRACK 353° CLIMBING TO 1500M,  
TURN RIGHT TO DJ, CONTINUE CLIMBING TO  
2150M. JOIN HOLDING PATTERN AT DJ IN ORDER  
TO BE PROVIDED RADAR VECTORING SERVICE.  
(MINIMUM CLIMB GRADIENT 4.5%)

**TRANSITION LEVEL FL100**



CHANGE: VHF FREQ.

| OCAH                 | A         | B         | C       | D       |
|----------------------|-----------|-----------|---------|---------|
| STRAIGHT-IN APPROACH | 83 (74)   | 86 (77)   | 89 (80) | 92 (83) |
| GP INOP              | 160 (151) |           |         |         |
| CIRCLING             | 480 (471) | 680 (671) | NA      |         |

CIRCLING IS ONLY USE IN THE EAST OF RWY  
NA: NOT AUTHORIZED

FAF - MAPT 4.6NM (8519M)

| GS              | KWH     | 185  | 240  | 290  | 320  | 345  |
|-----------------|---------|------|------|------|------|------|
| TIME            | MIN:SEC | 2:48 | 2:12 | 1:48 | 1:36 | 1:30 |
| RATE OF DESCENT | M/S     | 2.7  | 3.5  | 4.2  | 4.6  | 5    |