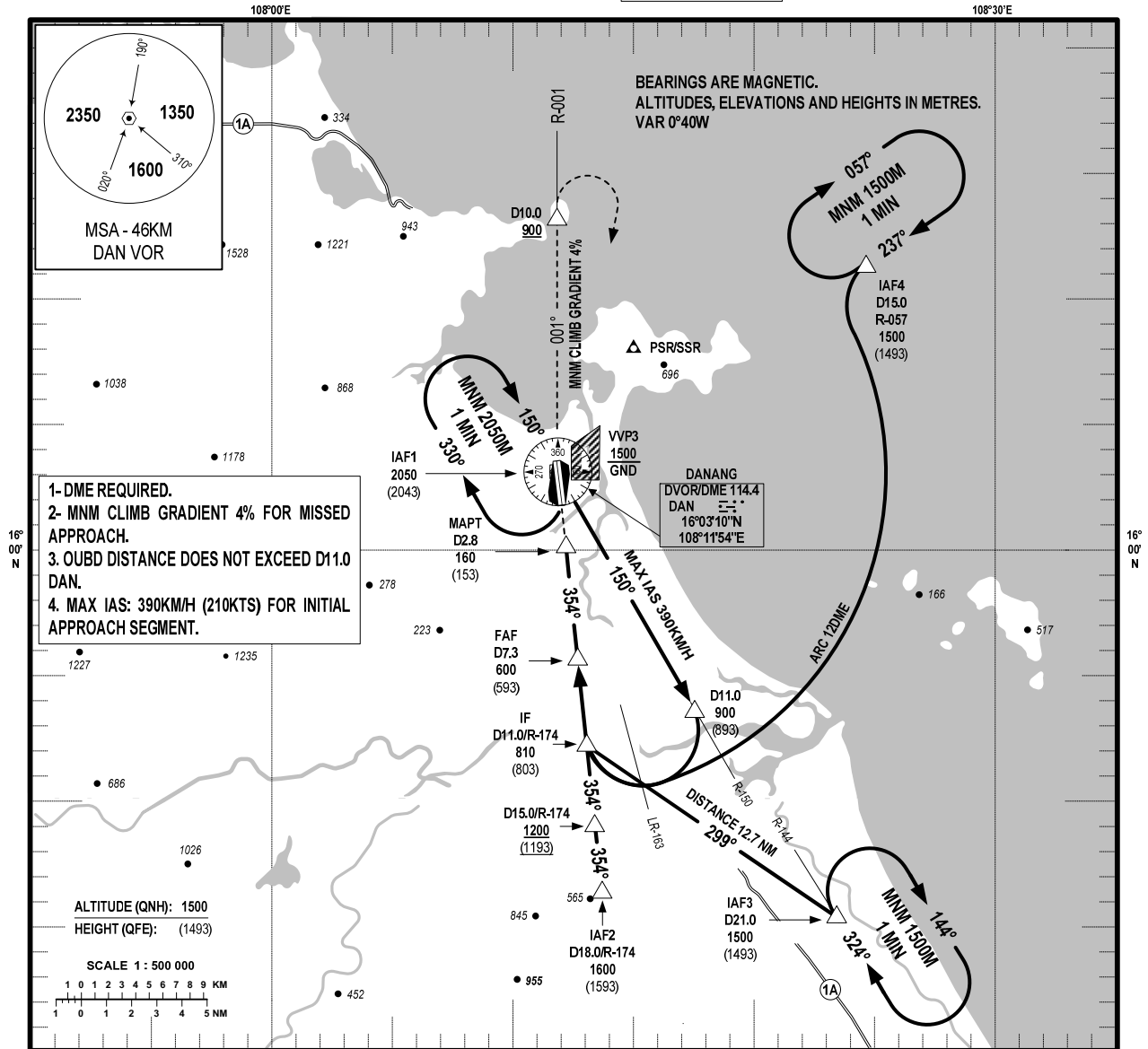


**INSTRUMENT  
APPROACH  
CHART - ICAO**

**AERODROME ELEV: 9M  
HEIGHT RELATED TO  
THR RWY 35L 7.3M**

**APP : 120.45 PRI  
APP : 125.45 SRY  
TWR : 118.35 PRI  
TWR : 118.05 SRY**

**DA NANG/DA NANG INTL (VVDN)  
VOR RWY 35L**



- 1- DME REQUIRED.
- 2- MNM CLIMB GRADIENT 4% FOR MISSED APPROACH.
- 3- OUBD DISTANCE DOES NOT EXCEED D11.0 DAN.
- 4- MAX IAS: 390KM/H (210KTS) FOR INITIAL APPROACH SEGMENT.

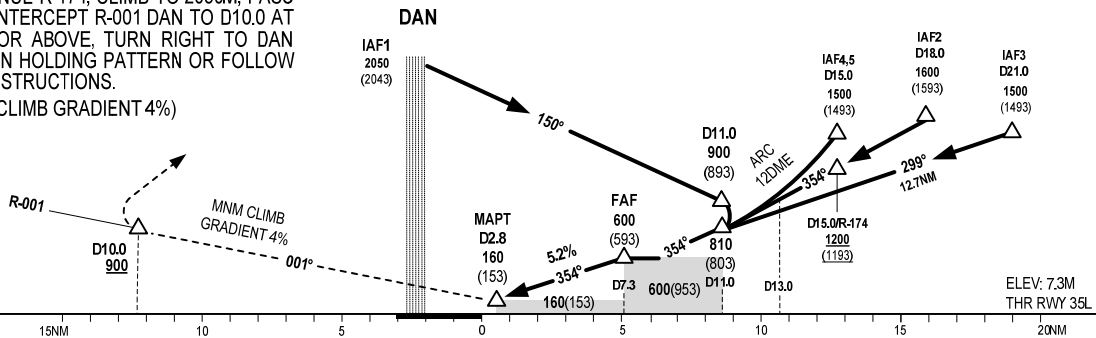
ALTITUDE (QNH): 1500  
HEIGHT (QFE): (1493)

SCALE 1 : 500 000

1 0 1 2 3 4 5 6 7 8 9 KM  
1 0 1 2 3 4 5 NM

**MISSED APPROACH:**

CONTINUE R-174, CLIMB TO 2050M, PASS DAN, INTERCEPT R-001 DAN TO D10.0 AT 900M OR ABOVE, TURN RIGHT TO DAN TO JOIN HOLDING PATTERN OR FOLLOW ATC INSTRUCTIONS.  
(MNM CLIMB GRADIENT 4%)



**TRANSITION LEVEL: FL100**

CHANGE: VHF FREQ.

OCA / H	A	B	C	D
STRAIGHT-IN APCH	160 (153)			
CIRCLING	480 (471)	480 (471)	680 (671)	NA

**DISTANCE FAF TO MAPT = 4.5NM (8334M)**

DME	7.3	6.0	5.0	4.0	2.8
HEIGHT	(593)	(465)	(369)	(272)	(153)

**CIRCLING ONLY IN THE EAST OF THE RWY.**

NA: NOT AUTHORIZED