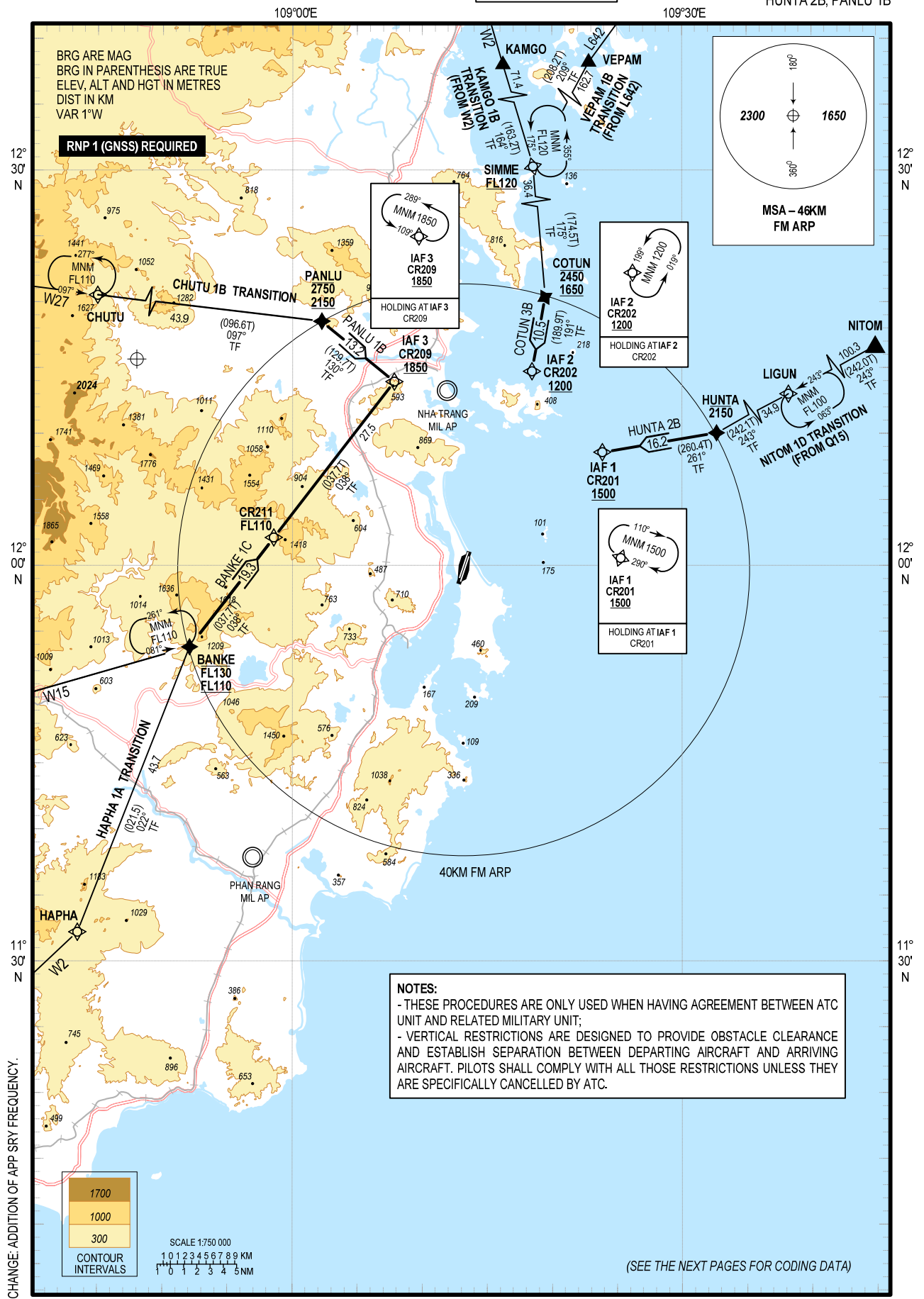


STANDARD ARRIVAL CHART -
INSTRUMENT (STAR) - ICAO

TRANSITION ALTITUDE
2750M

TWR: 118.2 PRI
124.35 SRY
APP: 127.9 PRI
124.35 SRY

KHANH HOA/CAM RANH INTL (VVCR)
RNP RWY 20L/R
BANKE 1C, COTUN 3B,
HUNTA 2B, PANLU 1B



NOTES:

- THESE PROCEDURES ARE ONLY USED WHEN HAVING AGREEMENT BETWEEN ATC UNIT AND RELATED MILITARY UNIT;
- VERTICAL RESTRICTIONS ARE DESIGNED TO PROVIDE OBSTACLE CLEARANCE AND ESTABLISH SEPARATION BETWEEN DEPARTING AIRCRAFT AND ARRIVING AIRCRAFT. PILOTS SHALL COMPLY WITH ALL THOSE RESTRICTIONS UNLESS THEY ARE SPECIFICALLY CANCELLED BY ATC.