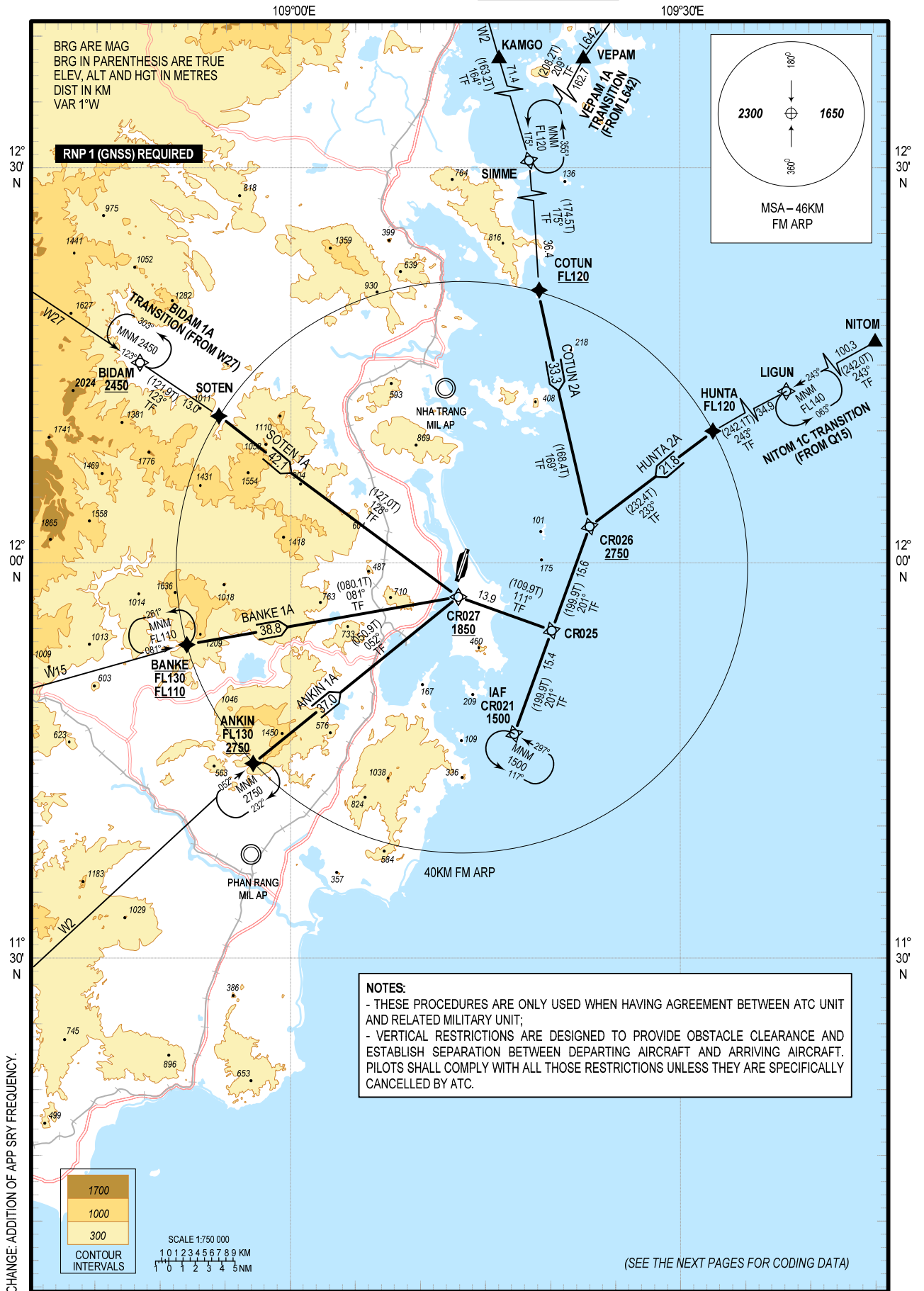


STANDARD ARRIVAL CHART -
INSTRUMENT (STAR) - ICAO

TRANSITION ALTITUDE
2750M

TWR: 118.2 PRI
124.35 SRY
APP: 127.9 PRI
124.35 SRY

KHANH HOA/CAM RANH INTL (VOCR)
RNP RWY 02L/R
ANKIN 1A, BANKE 1A, COTUN 2A,
HUNTA 2A, SOTEN 1A



NOTES:

- THESE PROCEDURES ARE ONLY USED WHEN HAVING AGREEMENT BETWEEN ATC UNIT AND RELATED MILITARY UNIT;
- VERTICAL RESTRICTIONS ARE DESIGNED TO PROVIDE OBSTACLE CLEARANCE AND ESTABLISH SEPARATION BETWEEN DEPARTING AIRCRAFT AND ARRIVING AIRCRAFT. PILOTS SHALL COMPLY WITH ALL THOSE RESTRICTIONS UNLESS THEY ARE SPECIFICALLY CANCELLED BY ATC.

CHANGE: ADDITION OF APP SRY FREQUENCY.

(SEE THE NEXT PAGES FOR CODING DATA)