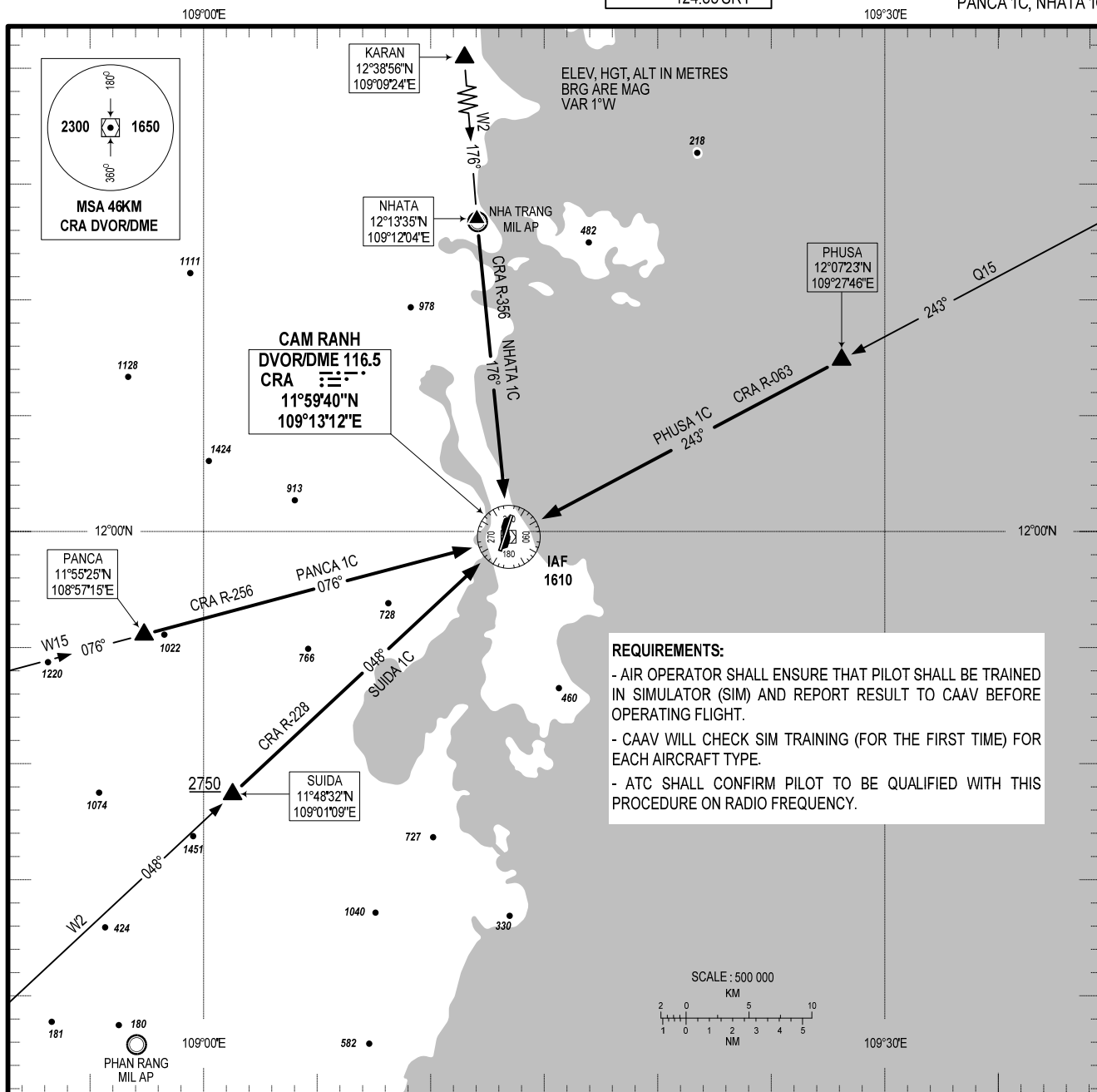


STANDARD ARRIVAL CHART -
INSTRUMENT (STAR) - ICAO

TRANSITION ALTITUDE
2750M

TWR: 118.2 PRI
124.35 SRY
APP: 127.9 PRI
124.35 SRY

KHANH HOA/CAM RANH INTL (VVCR)
RWY 02L
PHUSA 1C, SUIDA 1C,
PANCA 1C, NHATA 1C



REQUIREMENTS:
 - AIR OPERATOR SHALL ENSURE THAT PILOT SHALL BE TRAINED IN SIMULATOR (SIM) AND REPORT RESULT TO CAAV BEFORE OPERATING FLIGHT.
 - CAAV WILL CHECK SIM TRAINING (FOR THE FIRST TIME) FOR EACH AIRCRAFT TYPE.
 - ATC SHALL CONFIRM PILOT TO BE QUALIFIED WITH THIS PROCEDURE ON RADIO FREQUENCY.

RWY 02L:

- **PHUSA ONE CHARLIE ARRIVAL (PHUSA 1C):** FROM PHUSA, ON R-063 CRA DESCEND TO 2300M, UNTIL PASSING D 8.0 DVOR/DME CRA, CONTINUE DESCENDING TO 1610M AT CRA. CARRY OUT VOR/DME APCH RWY 02L.
- **SUIDA ONE CHARLIE ARRIVAL (SUIDA 1C):** FROM SUIDA 2750M OR ABOVE, DESCEND TO R-228 CRA DESCEND TO 2300M, UNTIL PASSING D 8.0 DVOR/DME CRA, CONTINUE DESCENDING TO 1610M AT CRA. CARRY OUT VOR/DME APCH RWY 02L.
- **PANCA ONE CHARLIE ARRIVAL (PANCA 1C):** FROM PANCA, ON R-256 CRA DESCEND 2300M, UNTIL PASSING D 8.0 DVOR/DME CRA, CONTINUE DESCENDING TO 1610M AT CRA. CARRY OUT VOR/DME APCH RWY 02L.
- **NHATA ONE CHARLIE ARRIVAL (NHATA 1C):** FROM NHATA, ON R-356 DESCEND TO 2300M, UNTIL PASSING D 8.0 DVOR/DME CRA, CONTINUE DESCENDING TO 1610M AT CRA. CARRY OUT VOR/DME APCH RWY 02L.

NOTE: IN CASES OF BAD WEATHER REASONS, AC DEVIATE MORE THAN 5NM FROM THE INTENDED ARRIVAL ROUTES, MUST BE KEPT ALT AT OR ABOVE MINIMUM SECTOR ALT (MSA CRA), PROCEED TO CRA VOR/DME THEN DESCEND IN THE HOLDING PATTERN TO CARRY OUT VOR/DME APCH RWY 02L.

CHANGE: ADDITION OF APP SRY FREQUENCY.