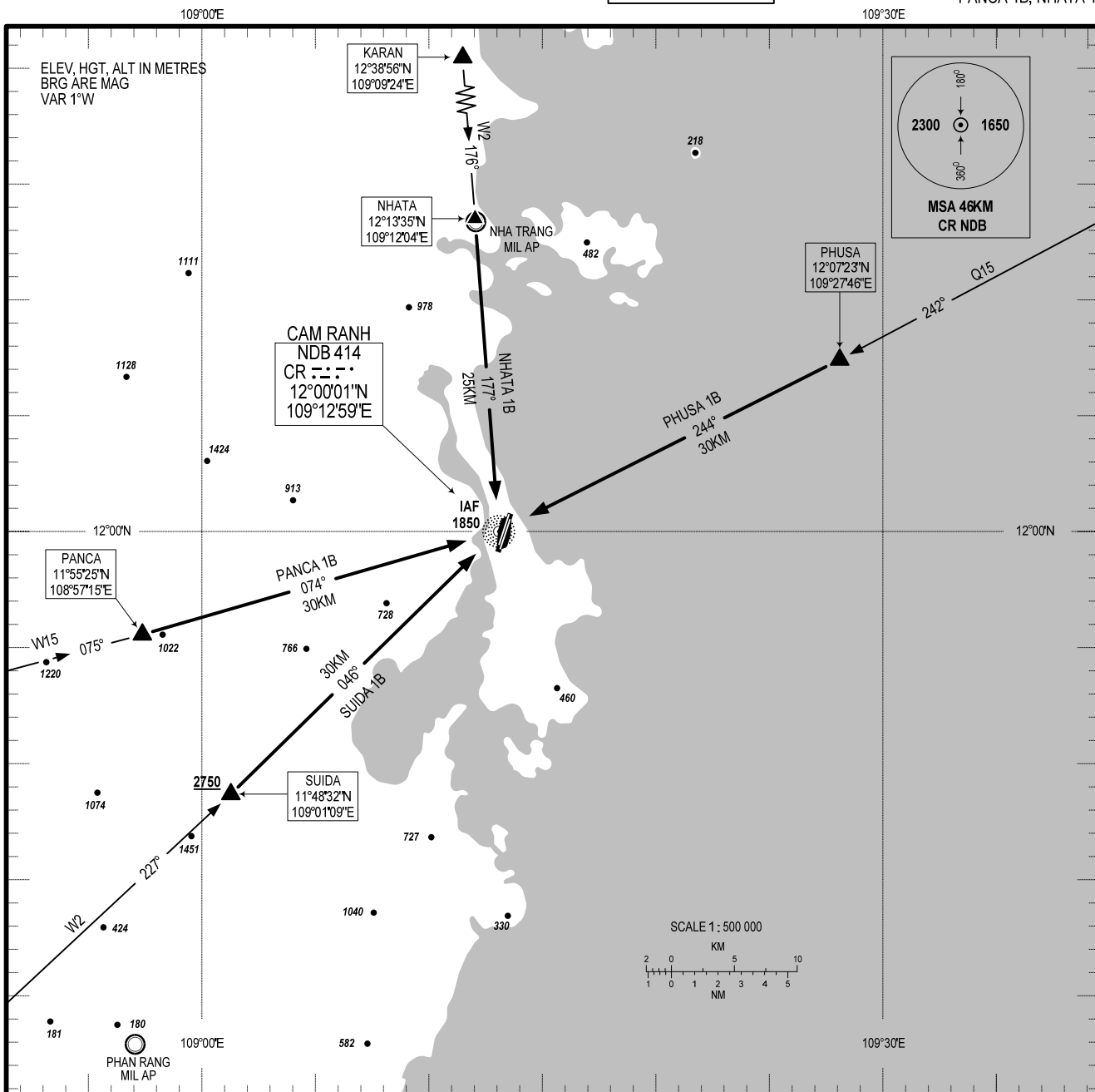


STANDARD ARRIVAL CHART -
INSTRUMENT (STAR) - ICAO

TRANSITION ALTITUDE
2750M

TWR: 118.2 PRI
124.35 SRY
APP: 127.9 PRI
124.35 SRY

KHANH HOA/CAM RANH INTL (VVCR)
RWY 20R
PHUSA 1B, SUIDA 1B,
PANCA 1B, NHATA 1B



RWY 20R:

- PHUSA ONE BRAVO ARRIVAL (PHUSA 1B): FROM PHUSA, ON BEARING 244° CR DESCEND TO IAF (CR NDB) AT 1850M, USE NDB APCH RWY 20R.
- SUIDA ONE BRAVO ARRIVAL (SUIDA 1B): FROM SUIDA 2750M OR ABOVE, ON BEARING 046° CR DESCEND TO IAF (CR NDB) AT 1850M, USE NDB APCH RWY 20R.
- PANCA ONE BRAVO ARRIVAL (PANCA 1B): FROM PANCA, ON BEARING 074° CR DESCEND TO IAF AT (CR NDB) AT 1850M, USE NDB APCH RWY 20R.
- NHATA ONE BRAVO ARRIVAL (NHATA 1B): FROM NHATA, ON BEARING 177° CR DESCEND TO IAF AT (CR NDB) AT 1850M, USE NDB APCH RWY 20R.

CHANGE: ADDITION OF APP SRY FREQUENCY.