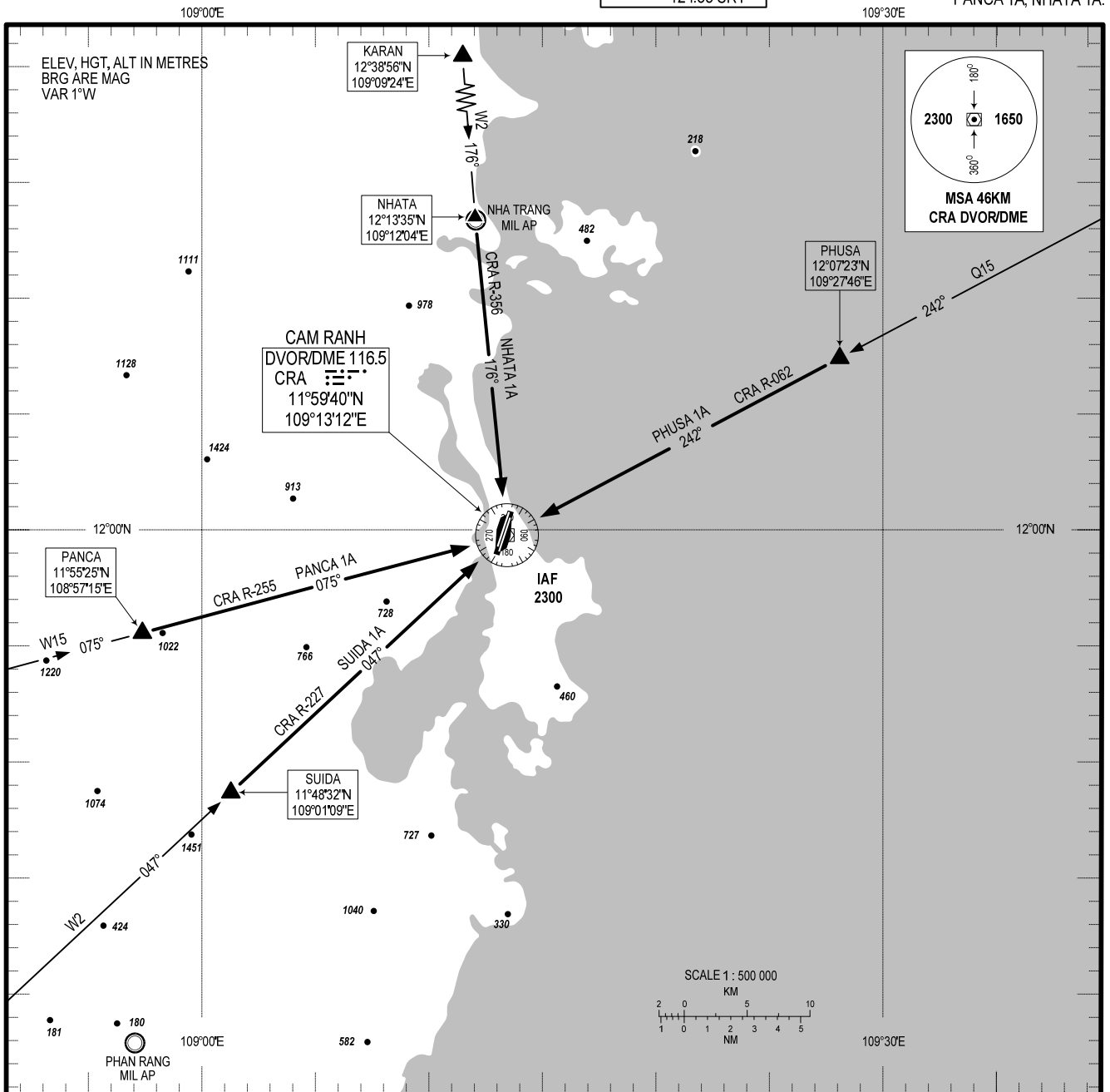


STANDARD ARRIVAL CHART -
INSTRUMENT (STAR) - ICAO

TRANSITION ALTITUDE
2750M

TWR: 118.2 PRI
124.35 SRY
APP: 127.9 PRI
124.35 SRY

KHANH HOA/CAM RANH INTL (VVCR)
RWY 02L/R - 20L/R
PHUSA 1A, SUIDA 1A,
PANCA 1A, NHATA 1A.



RWY 02L/R - 20L/R:

- PHUSA ONE ALPHA ARRIVAL (PHUSA 1A): FROM PHUSA, MAINTAIN ON R-062 CRA TO DESCEND TO IAF (CRA DVOR/DME) AT 2300M, USE ILS Y RWY 02L/R; VOR Y RWY 20R HOẶC VOR Y, ILS Z RWY 20L.
- SUIDA ONE ALPHA ARRIVAL (SUIDA 1A): FROM SUIDA, MAINTAIN ON R-227 CRA TO DESCEND TO IAF (CRA DVOR/DME) AT 2300M, USE ILS Y RWY 02L/R; VOR Y RWY 20R HOẶC VOR Y, ILS Z RWY 20L.
- PANCA ONE ALPHA ARRIVAL (PANCA 1A): FROM PANCA, MAINTAIN ON R-255 CRA TO DESCEND TO IAF (CRA DVOR/DME) AT 2300M, USE ILS Y RWY 02L/R; VOR Y RWY 20R HOẶC VOR Y, ILS Z RWY 20L.
- NHATA ONE ALPHA ARRIVAL (NHATA 1A): FROM NHATA, MAINTAIN ON R-356 CRA AND DESCEND TO IAF (CRA DVOR/DME) AT 2300M, USE ILS Y RWY 02L/R; VOR Y RWY 20R HOẶC VOR Y, ILS Z RWY 20L.

CHANGE: ADDITION OF APP SRY FREQUENCY.