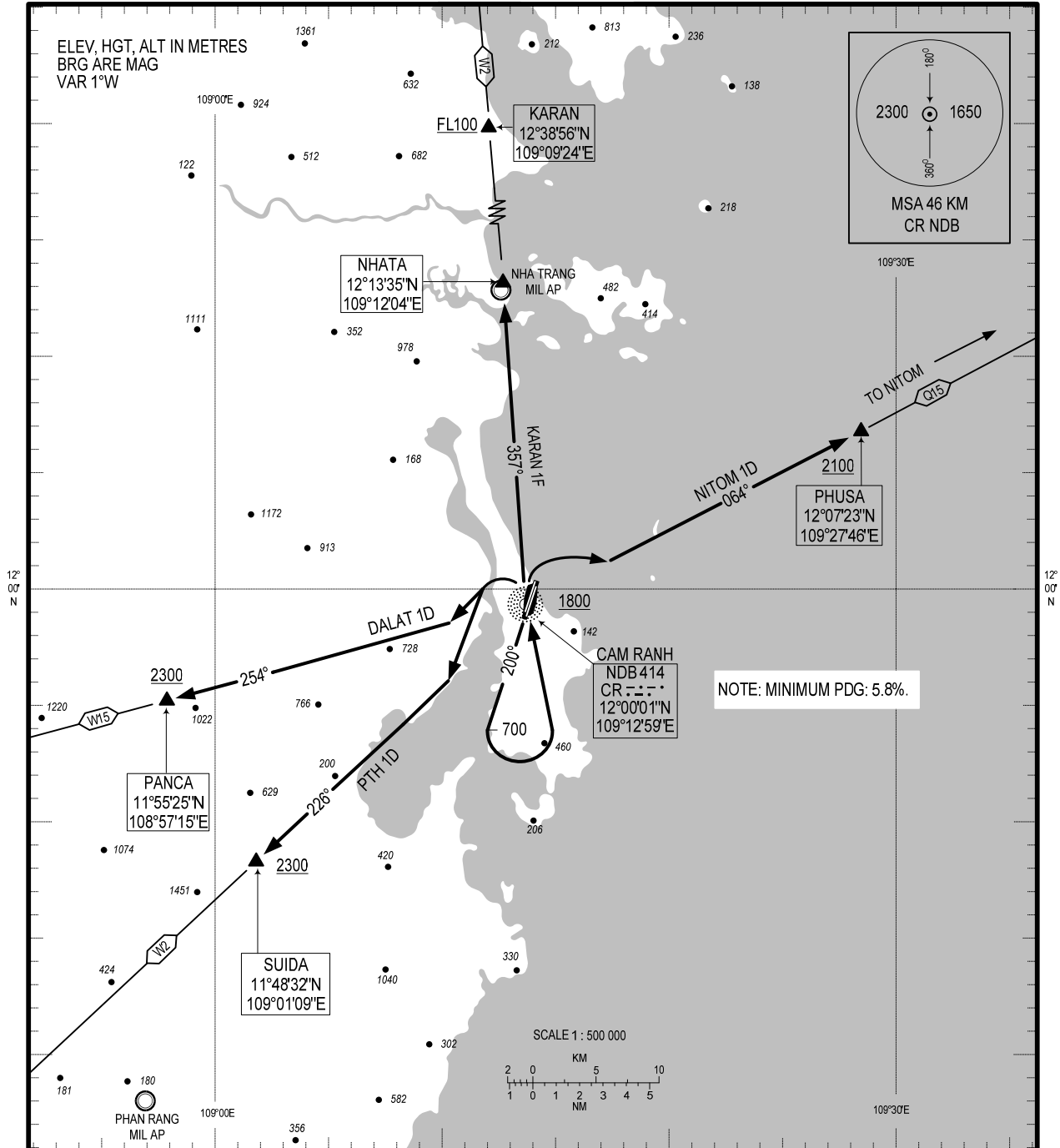


STANDARD DEPARTURE CHART -
INSTRUMENT (SID) - ICAO

TRANSITION ALTITUDE
2750M

TWR: 118.2 PRI
124.35 SRY
APP: 127.9 PRI
124.35 SRY

KHANH HOA/CAM RANH INTL (VVCR)
RWY 20R
NITOM 1D, PTH 1D,
DALAT 1D, KARAN 1F



RWY 20R:

- **NITOM ONE DELTA DEPARTURE (NITOM 1D):** AFTER DEPARTURE, MAINTAIN RWY HEADING, CLIMB TO 700M, TURN LEFT TO CR NDB AT 1800M OR ABOVE, TURN RIGHT TO INTERCEPT BEARING 064° CR NDB TO PHUSA AT 2100M OR ABOVE TO Q15 (MINIMUM PDG OF 5.8% UNTIL REACHING 2100M).
- **PHANTHIEP ONE DELTA DEPARTURE (PTH 1D):** AFTER DEPARTURE, MAINTAIN RWY HEADING, CLIMB TO 700M, TURN LEFT TO CR NDB AT 1800M OR ABOVE, TURN LEFT TO INTERCEPT BEARING 226° CR NDB TO SUIDA AT 2300M OR ABOVE TO W2 (MINIMUM PDG OF 5.8% UNTIL REACHING 2300M).
- **DALAT ONE DELTA DEPARTURE (DALAT 1D):** AFTER DEPARTURE, MAINTAIN RWY HEADING, CLIMB TO 700M, TURN LEFT TO CR NDB AT 1800M OR ABOVE, TURN LEFT TO INTERCEPT BEARING 254° CR NDB TO PANCA AT 2300M OR ABOVE TO W15 (MINIMUM PDG OF 5.8% UNTIL REACHING 2300M).
- **KARAN ONE FOXTROT DEPARTURE (KARAN 1F):** AFTER DEPARTURE, MAINTAIN RWY HEADING, CLIMB TO 700M, TURN LEFT TO CR NDB AT 1800M OR ABOVE, INTERCEPT BEARING 357° CR NDB TO NHATA TO W2, REACHING FL100 OR ABOVE BEFORE KARAN (MINIMUM PDG OF 5.8% UNTIL REACHING 2300M).

CHANGE: ADDITION OF APP SRY FREQUENCY.