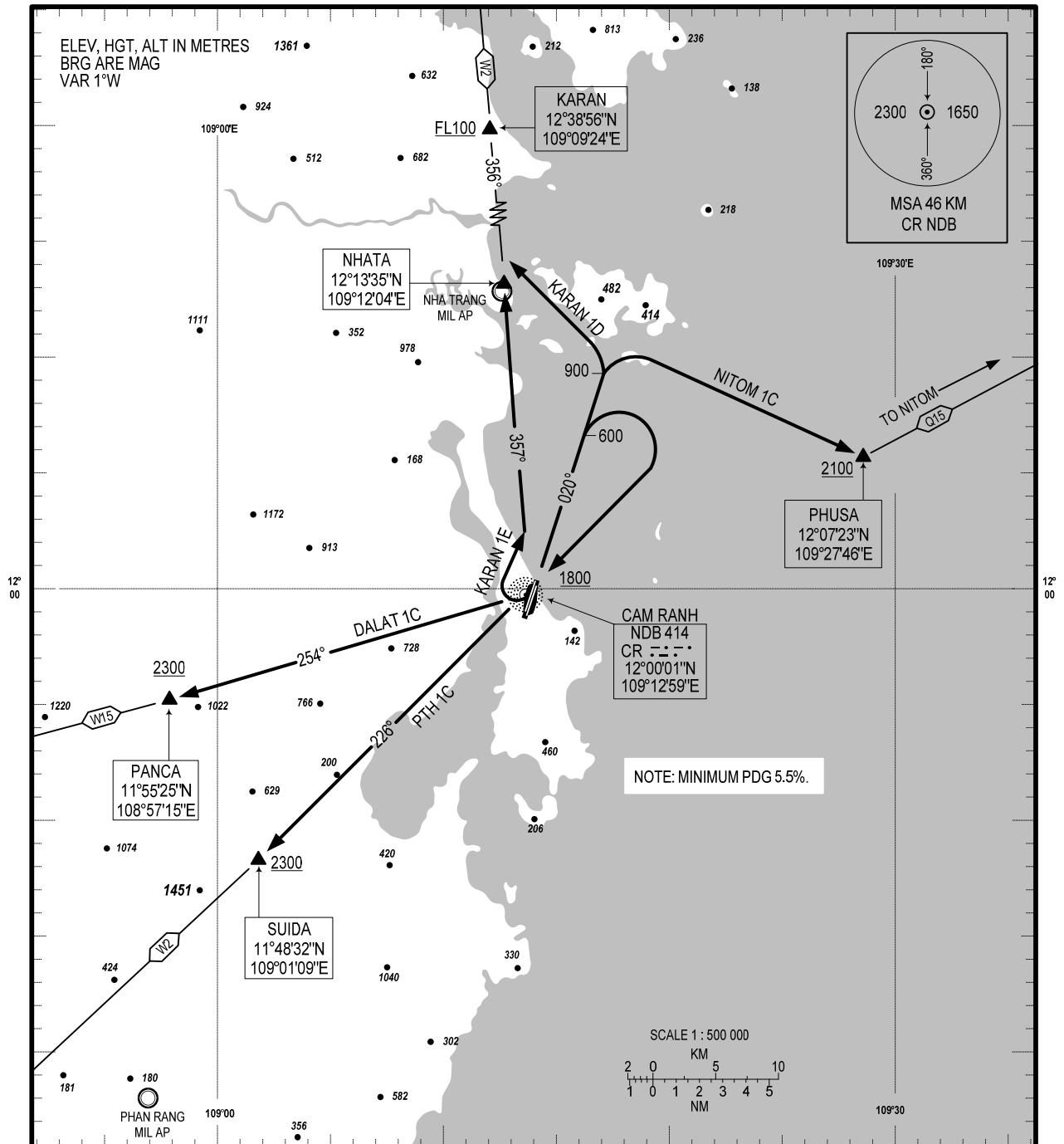


STANDARD DEPARTURE CHART -
INSTRUMENT (SID) - ICAO

TRANSITION ALTITUDE
2750M

TWR: 118.2 PRI
124.35 SRY
APP: 127.9 PRI
124.35 SRY

KHANH HOA/CAM RANH INTL (VVCR)
RWY 02L
NITOM 1C, PTH 1C, DALAT 1C,
KARAN 1D, KARAN 1E



RWY 02L:

- **NITOM ONE CHARLIE DEPARTURE (NITOM 1C):** AFTER DEPARTURE, MAINTAIN RWY HEADING, CLIMB TO 900M, TURN RIGHT TO PHUSA AT 2100M OR ABOVE, INTERCEPT Q15 TO NITOM (MINIMUM PDG OF 5.5% UNTIL REACHING 2100 M).
- **PHANTHIEP ONE CHARLIE DEPARTURE (PTH 1C):** AFTER DEPARTURE, MAINTAIN RWY HEADING, CLIMB TO 600M, TURN RIGHT TO CR NDB AT 1800M OR ABOVE, INTERCEPT BEARING 226° CR TO SUIDA AT 2300M OR ABOVE (MINIMUM PDG OF 5.5% UNTIL REACHING 2300 M).
- **DALAT ONE CHARLIE DEPARTURE (DALAT 1C):** AFTER DEPARTURE, MAINTAIN RWY HEADING, CLIMB TO 600M, TURN RIGHT TO CR NDB AT 1800M OR ABOVE, INTERCEPT BEARING 254° CR TO PANCA AT 2300M OR ABOVE (MINIMUM PDG OF 5.5% UNTIL REACHING 2300M).
- **KARAN ONE DELTA DEPARTURE (KARAN 1D):** AFTER DEPARTURE, MAINTAIN RWY HEADING, CLIMB TO 900M, TURN LEFT TO INTERCEPT W2 AT FL100 OR ABOVE BEFORE KARAN (MINIMUM PDG OF 5.5% UNTIL REACHING 2300 M).
- **KARAN ONE ECHO DEPARTURE (KARAN 1E):** AFTER DEPARTURE, MAINTAIN RWY HEADING, CLIMB TO 600M, TURN RIGHT TO CR NDB AT 1800M OR ABOVE, TURN RIGHT ON BEARING 357° CR TO NHATA, INTERCEPT W2 AT FL100 OR ABOVE BEFORE KARAN (MINIMUM PDG OF 5.5% UNTIL 2300 M).

CHANGE: ADDITION OF APP SRY FREQUENCY.