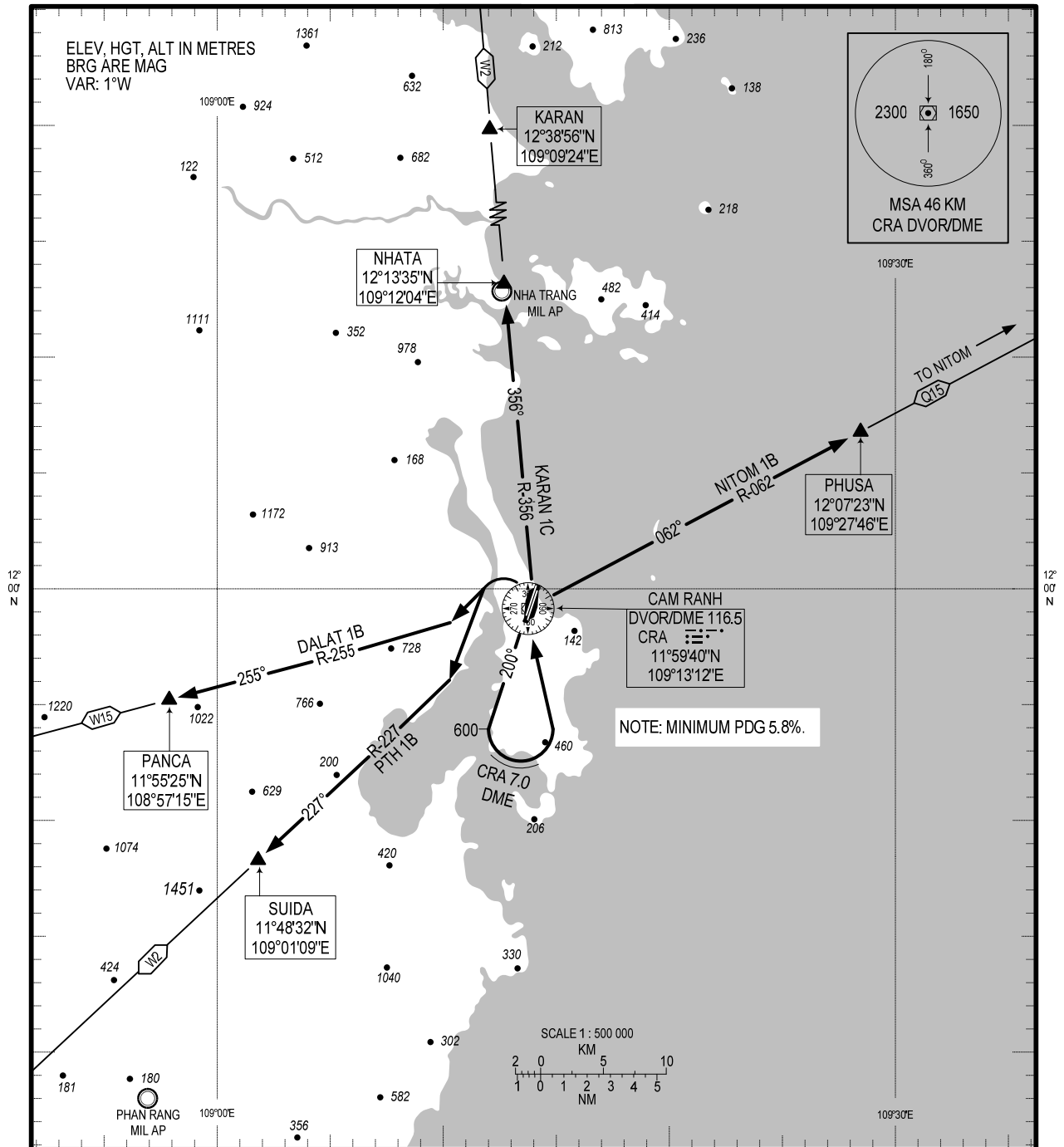


STANDARD DEPARTURE CHART -
INSTRUMENT (SID) - ICAO

TRANSITION ALTITUDE
2750M

TWR: 118.2 PRI
124.35 SRY
APP: 127.9 PRI
124.35 SRY

KHANH HOA/CAM RANH INTL (VVCR)
RWY 20L/R
NITOM 1B, PTH 1B,
DALAT 1B, KARAN 1C



CHANGE: ADDITION OF APP SRY FREQUENCY.

RWY 20L/R:

- **NITOM ONE BRAVO DEPARTURE (NITOM 1B):** AFTER DEPARTURE, CLIMB ON R-200 CRA UNTIL PASSING 600M, TURN LEFT WITHIN CRA D7.0, DIRECT TO CRA AT 1800M OR ABOVE, TURN RIGHT TO INTERCEPT R-062 CRA TO PHUSA AND NITOM (MINIMUM PDG OF 5.8% UNTIL PASSING 1800M).
- **PHANTHIEU ONE BRAVO DEPARTURE (PTH 1B):** AFTER DEPARTURE, CLIMB ON R-200 CRA UNTIL PASSING 600M, TURN LEFT WITHIN D7.0 CRA, DIRECT TO CRA AT 1800M OR ABOVE, TURN LEFT TO INTERCEPT R-227 CRA TO SUIDA (MINIMUM PDG OF 5.8% UNTIL PASSING 1800M).
- **DALAT ONE BRAVO DEPARTURE (DALAT 1B):** AFTER DEPARTURE, CLIMB ON CRA R-200 UNTIL PASSING 600M, TURN LEFT WITHIN D7.0 CRA, DIRECT TO CRA AT 1800M OR ABOVE, TURN LEFT TO INTERCEPT R-255 CRA TO PANCA (MINIMUM PDG OF 5.8% UNTIL PASSING 1800M).
- **KARAN ONE CHARLIE DEPARTURE (KARAN 1C):** AFTER DEPARTURE, CLIMB ON CRA R-200 UNTIL REACHING 600M, TURN LEFT WITHIN D7.0 CRA, DIRECT TO CRA AT 1550M OR ABOVE, INTERCEPT R-356 CRA TO NHATA AND KARAN (MINIMUM PDG OF 5.8% UNTIL PASSING 2300M).