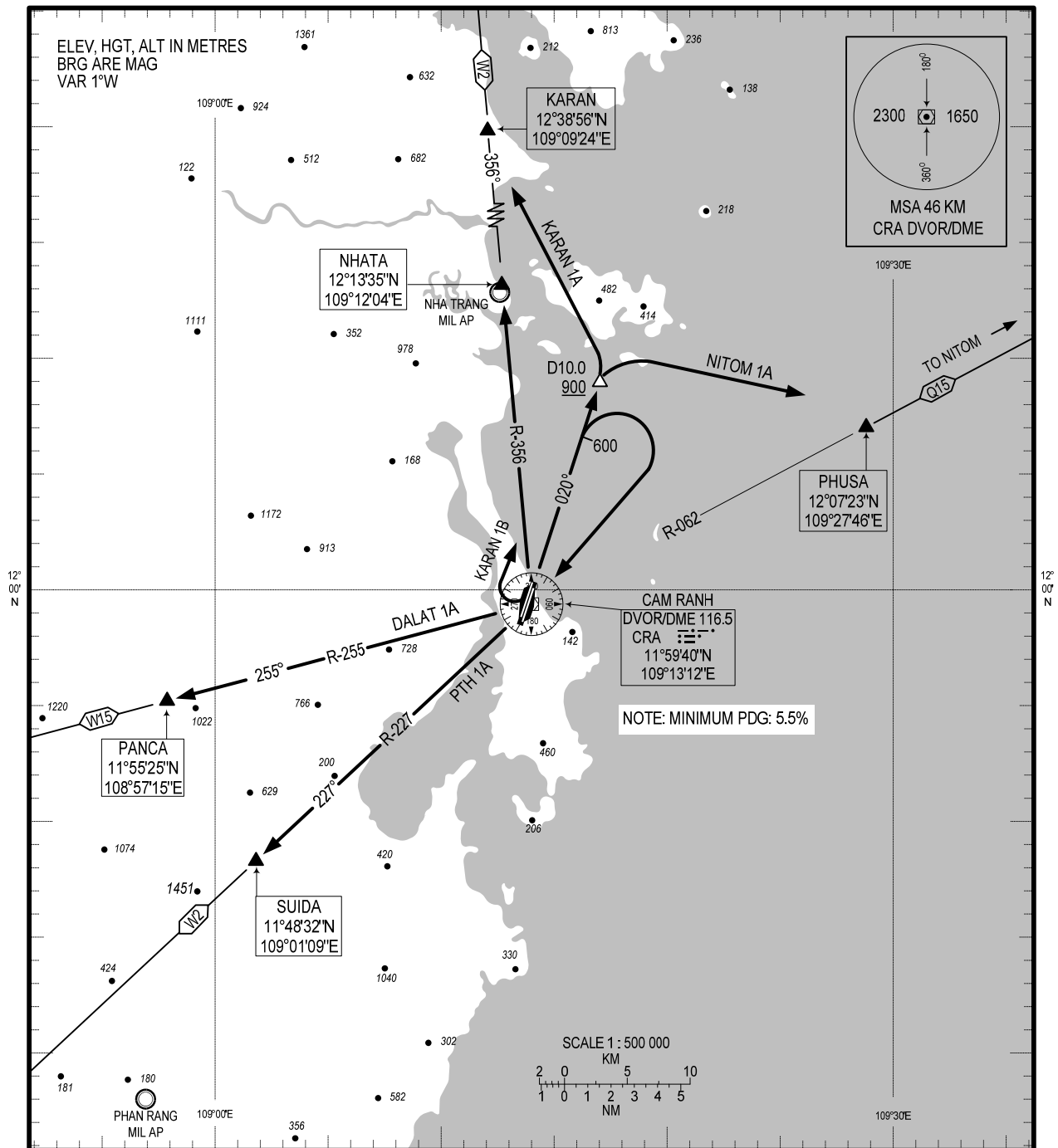


STANDARD DEPARTURE CHART -
INSTRUMENT (SID) - ICAO

TRANSITION ALTITUDE
2750M

TWR: 118.2 PRI
124.35 SRY
APP: 127.9 PRI
124.35 SRY

KHANH HOA/CAM RANH INTL (VOCR)
RWY 02L/R
NITOM 1A, PTH 1A, DALAT 1A,
KARAN 1A, KARAN 1B



RWY 02L/R:

- **NITOM ONE ALPHA DEPARTURE (NITOM 1A):** AFTER DEPARTURE, MAINTAIN RWY HEADING UNTIL PASSING D10.0 CRA AT 900M OR ABOVE, TURN RIGHT TO INTERCEPT CRA R-062 TO NITOM (MINIMUM PDG OF 5.5% UNTIL PASSING 900M).
- **PHANTHIEU ONE ALPHA DEPARTURE (PTH 1A):** AFTER DEPARTURE, MAINTAIN RWY HEADING UNTIL PASSING 600M, TURN RIGHT WITHIN D10.0 CRA, DIRECT TO CRA AT OR ABOVE 1800M, INTERCEPT CRA R-227 TO SUIDA (MINIMUM PDG OF 5.5% UNTIL PASSING 1800M).
- **DALAT ONE ALPHA DEPARTURE (DALAT 1A):** AFTER DEPARTURE, MAINTAIN RWY HEADING UNTIL PASSING 600M, TURN RIGHT WITHIN D10.0 CRA, DIRECT TO CRA AT 1800M OR ABOVE, INTERCEPT CRA R-255 TO PANCA (MINIMUM PDG OF 5.5% UNTIL PASSING 1800M).
- **KARAN ONE ALPHA DEPARTURE (KARAN 1A):** AFTER DEPARTURE, MAINTAIN RWY HEADING UNTIL PASSING D10.0 CRA AT 900M OR ABOVE, TURN LEFT TO INTERCEPT R-356 CRA TO KARAN AT FL100 OR ABOVE (MINIMUM PDG OF 5.5% UNTIL PASSING 2300M).
- **KARAN ONE BRAVO DEPARTURE (KARAN 1B):** AFTER DEPARTURE, MAINTAIN RWY HEADING UNTIL PASSING 600M, TURN RIGHT WITHIN 10.0 CRA, DIRECT TO CRA AT 1550M OR ABOVE, TURN RIGHT TO INTERCEPT CRA R-356 TO NHATA AND KARAN (MINIMUM PDG OF 5.5% UNTIL PASSING 2300M).

CHANGE: ADDITION OF APP SRY FREQUENCY.