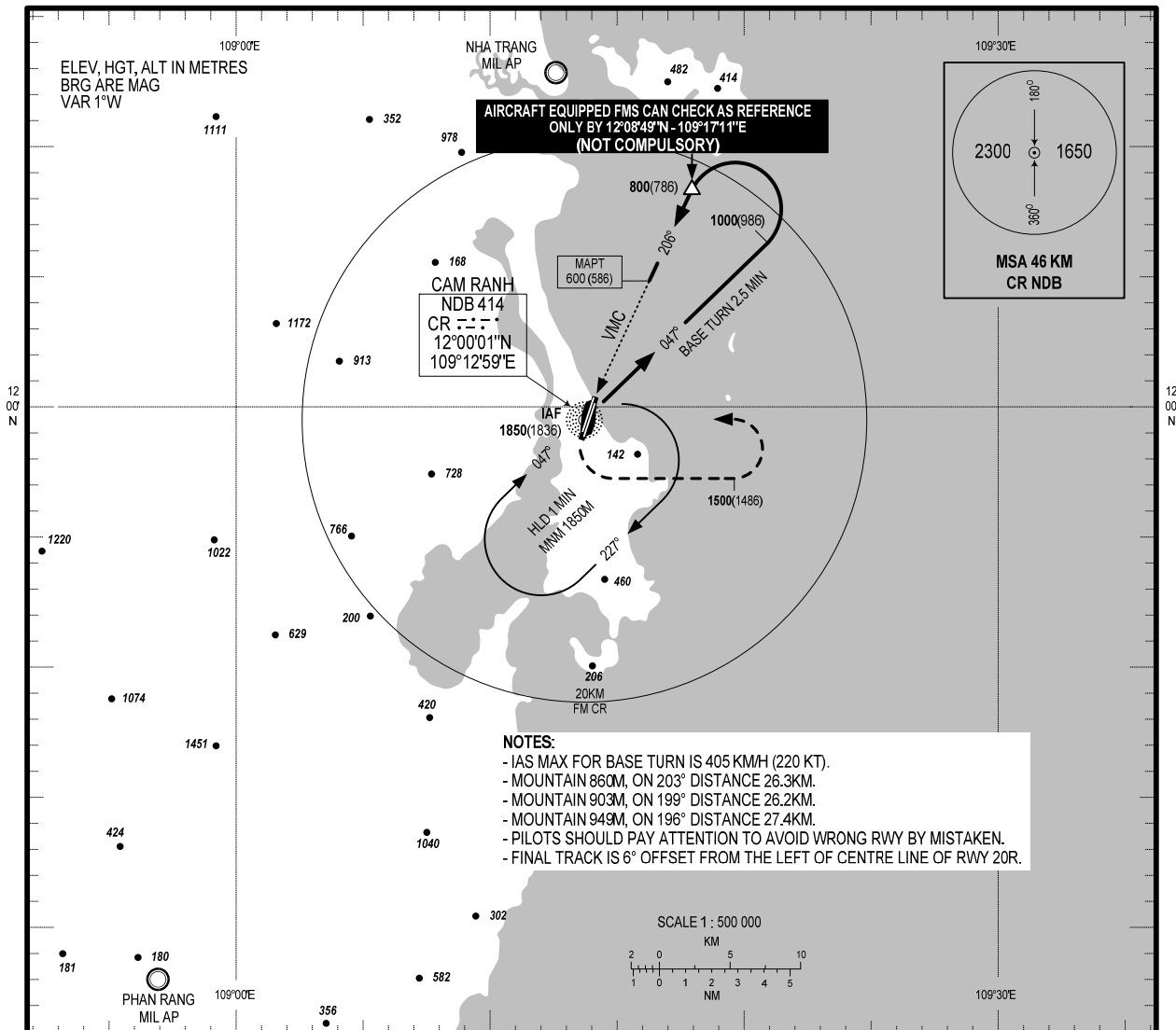


INSTRUMENT
APPROACH
CHART - ICAO

AERODROME ELEV 14.1M
HEIGHTS RELATED TO
THR RWY 20R - ELEV 14.1M

TWR: 118.2 PRI
124.35 SRY
APP: 127.9 PRI
124.35 SRY

KHANH HOA/CAM RANH INTL (VVCR)
NDB
RWY 20R
CAT C, D

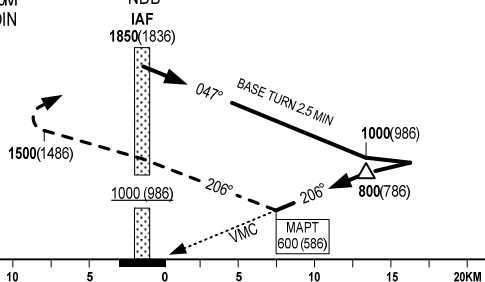


- NOTES:**
- IAS MAX FOR BASE TURN IS 405 KMH (220 KT).
 - MOUNTAIN 860M, ON 203° DISTANCE 26.3KM.
 - MOUNTAIN 903M, ON 199° DISTANCE 26.2KM.
 - MOUNTAIN 949M, ON 196° DISTANCE 27.4KM.
 - PILOTS SHOULD PAY ATTENTION TO AVOID WRONG RWY BY MISTAKEN.
 - FINAL TRACK IS 6° OFFSET FROM THE LEFT OF CENTRE LINE OF RWY 20R.

MISSED APPROACH:

CLIMB TO 1000M (986M) OR ABOVE AT CR NDB, TURN LEFT PROCEED TO THE EAST, CONTINUE CLIMBING TO 1500M (1486M), TURN LEFT TO CR NDB AT 1850M (1836M) TO JOIN HOLDING PATTERN OR FOLLOW ATC INSTRUCTIONS.

TRANSITION LEVEL: FL100
TRANSITION ALTITUDE: 2750M



THR ELEV RWY 20R: 14.1M
KM TO/FROM THR RWY 20R

OCA/H		
AIRCRAFT CAT	C	D
STRAIGHT-IN APPROACH	600(586)	
CIRCLING	900(886)	

CIRCLING IS ONLY IN THE EAST OF RWY

CHANGE: ADDITION OF APP SRY FREQUENCY.