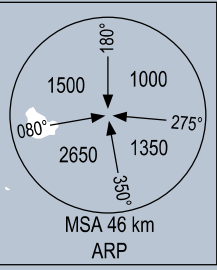


USAGE CONDITION: THIS PROCEDURE IS ONLY USED IN CASE OF NO MILITARY OPERATION IN RELATED AREAS OR HAVING COMPLETED COORDINATION BETWEEN CIVIL AVIATION AND MILITARY.

NOTE: FINAL APPROACH TRACK IS 14° OFFSET FROM EXTENDED RWY CENTER LINE.

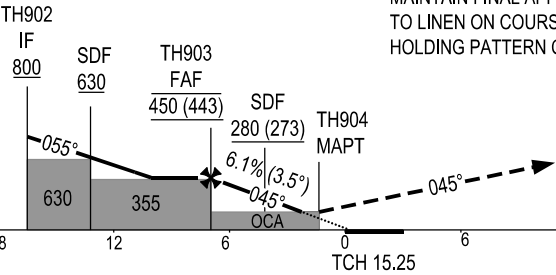


RNP APCH REQUIRED

KILOMETRES TO NEXT WPT	TH904 (MAPT)	0.9	1.0	3.0	5.6
ALT		160	170	290	450

TRANSITION ALT 2750

MISSED APPROACH:
MAINTAIN FINAL APPROACH TRACK CLIMB TO 300 m, TURN LEFT TO LINEN ON COURSE 291° AT 1200 m (MAX IAS 425 km/h). JOIN HOLDING PATTERN OR FOLLOW TUY HOA TWR INSTRUCTIONS.



THR ELEV 7

KILOMETRES TO/FM THR RWY 03

OCA (H)	A	B	C	D
LNAV	160 (152)			
CIRCLING	270 (262)	435 (427)	610 (602)	

GS	km/h	150	200	250	300	350
RATE OF DESCENT	m/s	2.5	3.4	4.2	5.1	5.9
FAF-MAPT		6.1% (3.5°)				

FOR DATA TABULATION, SEE VERSO

CHANGE: NEW CHART.