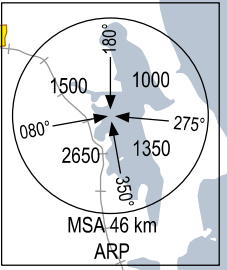


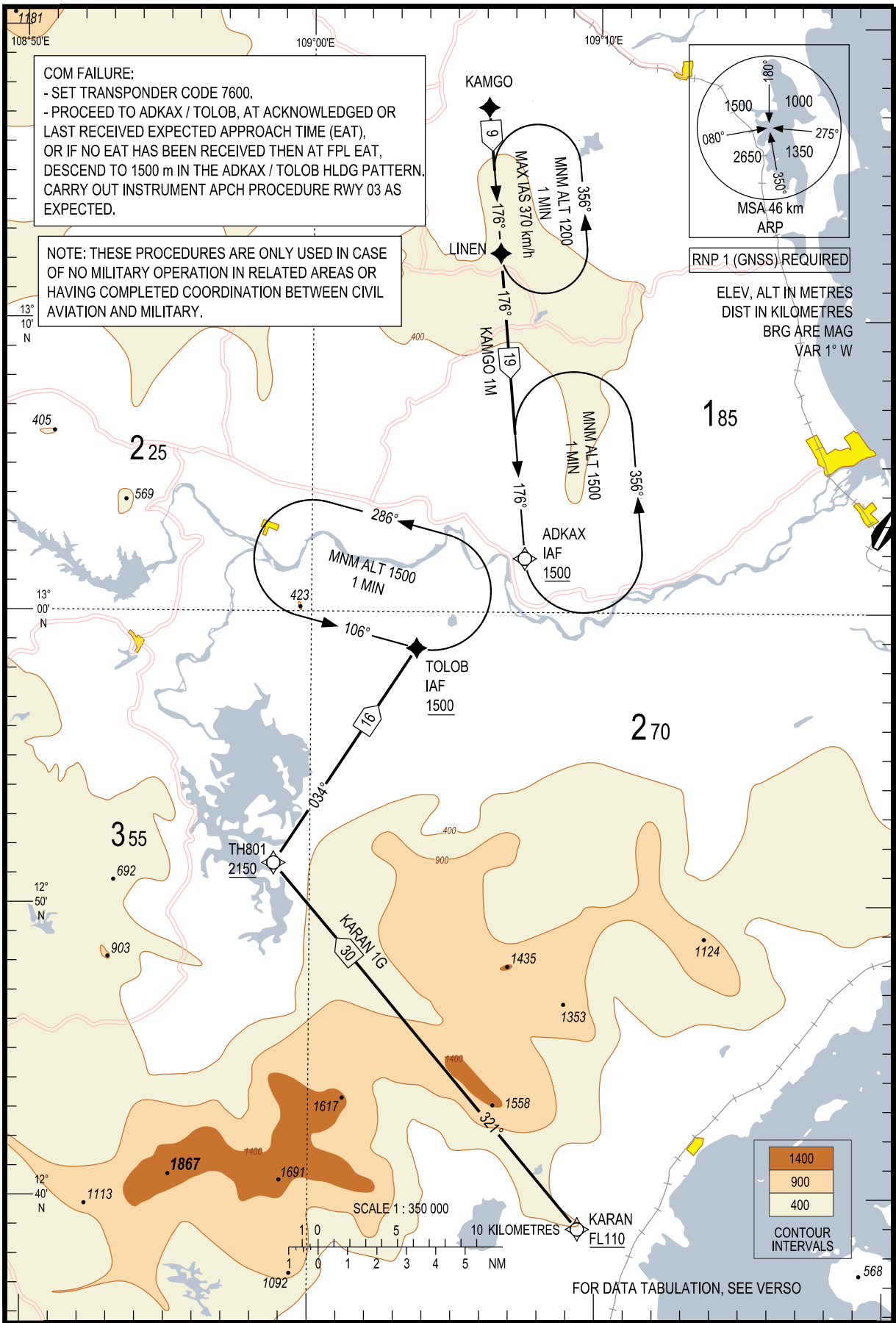
COM FAILURE:  
- SET TRANSPONDER CODE 7600.  
- PROCEED TO ADKAX / TOLOB, AT ACKNOWLEDGED OR  
LAST RECEIVED EXPECTED APPROACH TIME (EAT),  
OR IF NO EAT HAS BEEN RECEIVED THEN AT FPL EAT,  
DESCEND TO 1500 m IN THE ADKAX / TOLOB HLDG  
PATTERN, CARRY OUT INSTRUMENT APCH PROCEDURE  
RWY 03 AS EXPECTED.

NOTE: THESE PROCEDURES ARE ONLY USED IN CASE  
OF NO MILITARY OPERATION IN RELATED AREAS OR  
HAVING COMPLETED COORDINATION BETWEEN CIVIL  
AVIATION AND MILITARY.

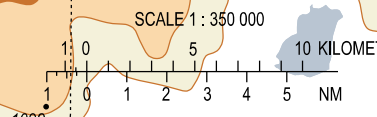


RNP 1 (GNSS) REQUIRED

ELEV, ALT IN METRES  
DIST IN KILOMETRES  
BRG ARE MAG  
VAR 1° W



	1400
	900
	400
CONTOUR INTERVALS	



FOR DATA TABULATION, SEE VERSO

CHANGE: NEW CHART.