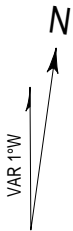


ELEVATIONS IN METRES

TWYS WIDTH  
W1, W2: 18M

TWYS BEARING STRENGTH:  
W1: PCN 45/F/B/X/T, BITUMINOUS CONCRETE  
W2: PCN 45/F/B/X/T, BITUMINOUS CONCRETE

ACFT STAND BEARING STRENGTH:  
STANDS 1, 2: PCN 63/R/B/W/T  
STANDS 3, 4: PCN 53/R/B/W/T  
STANDS 5, 6: PCN 46/F/B/X/T



RWY 17/35



ARP  
18°43'48"N  
105°40'18"E

VIN 113.1

W2

VIN 113.1

W1

TERMINAL

NEW TERMINAL

ROAD

ROAD

ROAD

6

5

4

3

2

1

THE STOP LINE 2

NOTES:

- STANDS 2, 3: USING PASSENGER BRIDGE.
- STANDS 1, 2, 3, 4: USED FOR ACFT CODE C, UP TO A321 AND EQUIVALENT. ACFT SELF-TAXI INTO STANDS, USING TOW TRACTOR WHEN ACFT TAXI OUT.
- STANDS 5, 6: 2 STOP LINES ARE AVAILABLE
  - + THE STOP LINE 1: USED FOR ACFT CODE C, UP TO A321 AND EQUIVALENT. ACFT SELF-TAXI INTO STANDS, USING TOW TRACTOR WHEN ACFT TAXI OUT;
  - + THE STOP LINE 2: USED FOR ACFT WITH LENGTH LESS THAN 28M AND WINGSPAN LESS THAN 24M. ACFT SELF-TAXI IN/OUT.
- WHEN APPLY TAXIING PROCEDURES, PILOT ARE REQUESTED STRICTLY FOLLOW ATC'S CLEARANCE.

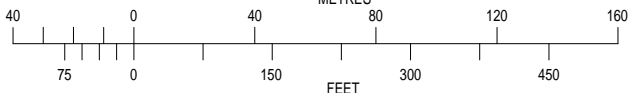
STANDS COORDINATES (WGS 84)

1: 18°43'37.75"N - 105°40'10.79"E	4: 18°43'42.78"N - 105°40'10.10"E
2: 18°43'39.49"N - 105°40'10.55"E	5: 18°43'44.59"N - 105°40'09.85"E (THE STOP LINE 1)
3: 18°43'41.33"N - 105°40'10.30"E	6: 18°43'46.04"N - 105°40'09.65"E (THE STOP LINE 1)

LEGEND

AIRCRAFT STAND	1
TWY EDGE LIGHTS	•
BUILDINGS	■
TAXILANE	—
VOR CHECK POINT AND FREQUENCY	VIN 113.1 ○
RWY - HOLDING POSITION	≡≡≡

SCALE 1:2500  
METRES



CHANGES: BEARING STRENGTH OF TWYS W1 AND W2; ADDN OF VOR CHECK POINT; WITHDRAWAL OF HOT SPOT 1.