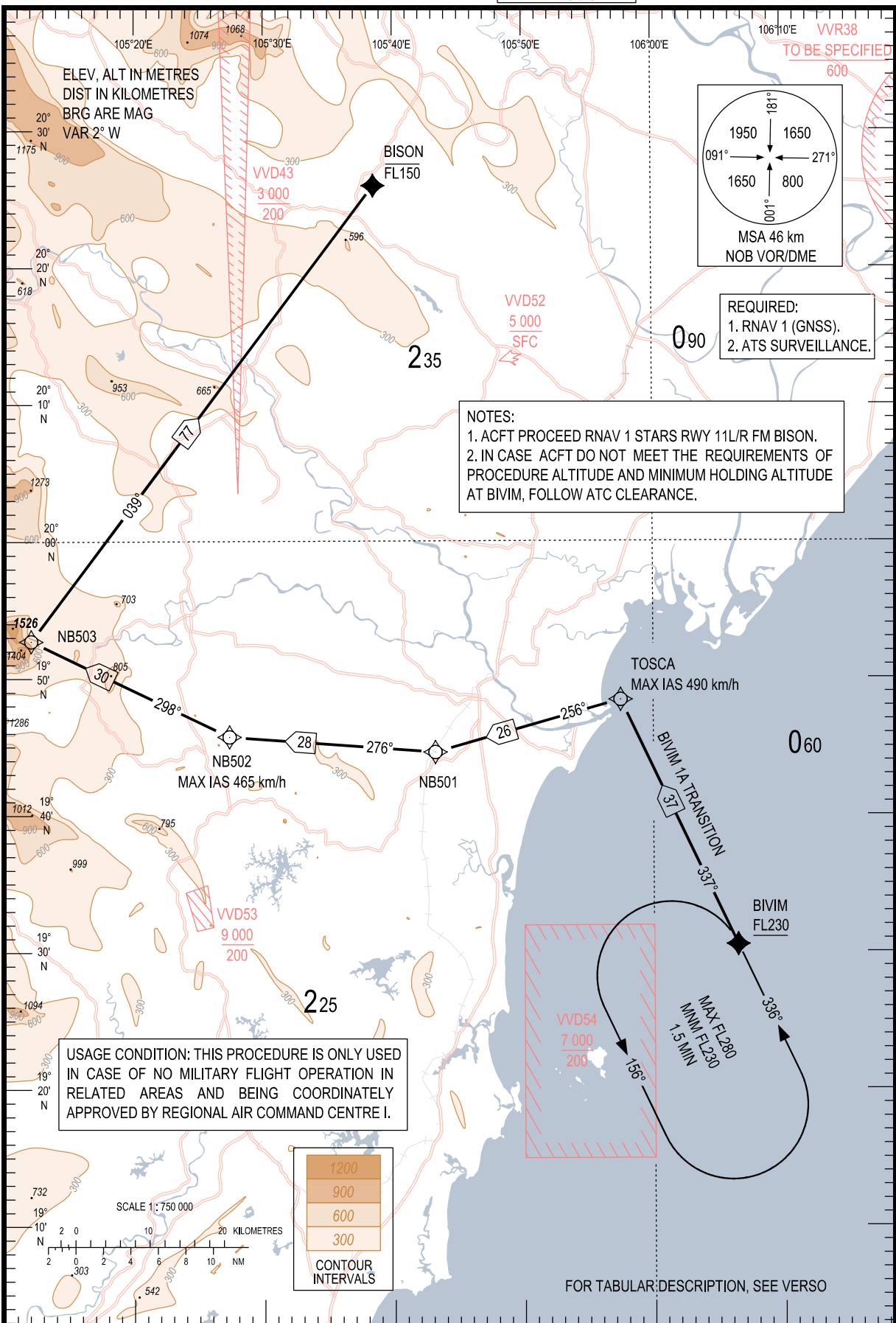


**STANDARD ARRIVAL CHART-  
INSTRUMENT (STAR) - ICAO**

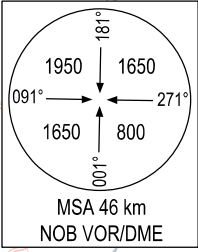
TRANSITION ALTITUDE  
2750

TMC 125.1 PRI  
126.575 SRY  
ARR 121.0 PRI  
120.075 SRY  
TWR 118.4 PRI  
118.9 SRY

**HA NOI/NOI BAI INTL (VNB)  
RNAV RWY 11L/R  
BIVIM 1A TRANSITION**



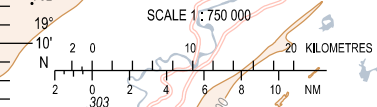
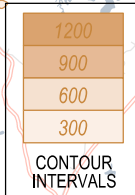
ELEV, ALT IN METRES  
DIST IN KILOMETRES  
BRG ARE MAG  
VAR 2° W



REQUIRED:  
1. RNAV 1 (GNSS).  
2. ATIS SURVEILLANCE.

NOTES:  
1. ACFT PROCEED RNAV 1 STARS RWY 11L/R FM BISON.  
2. IN CASE ACFT DO NOT MEET THE REQUIREMENTS OF PROCEDURE ALTITUDE AND MINIMUM HOLDING ALTITUDE AT BIVIM, FOLLOW ATC CLEARANCE.

USAGE CONDITION: THIS PROCEDURE IS ONLY USED IN CASE OF NO MILITARY FLIGHT OPERATION IN RELATED AREAS AND BEING COORDINATELY APPROVED BY REGIONAL AIR COMMAND CENTRE I.



FOR TABULAR DESCRIPTION, SEE VERSO