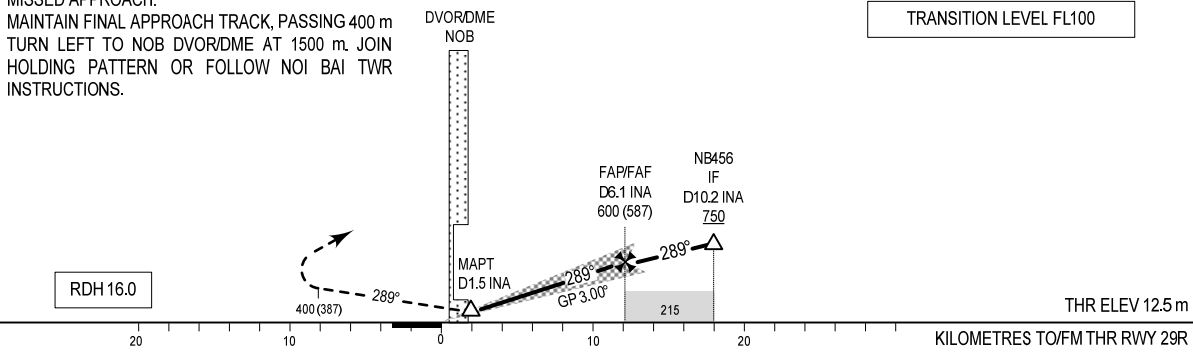


MISSED APPROACH:
MAINTAIN FINAL APPROACH TRACK, PASSING 400 m
TURN LEFT TO NOB DVOR/DME AT 1500 m. JOIN
HOLDING PATTERN OR FOLLOW NOI BAI TWR
INSTRUCTIONS.

TRANSITION LEVEL FL100



OCA/H		A	B	C	D
STRAIGHT-IN APPROACH	CAT I	76 (63)			
	GP INOP	150 (137)			
CIRCLING		200 (187)	360 (347)	450 (437)	600 (587)

GS	km/h	150	200	250	300
FAP-MAPT 8.4 km	mins	3:21	2:31	2:01	1:41
RATE OF DESCENT (3.00°)	m/s	2.2	2.9	3.6	4.4

CIRCLING IS ONLY IN THE SOUTH OF RWY