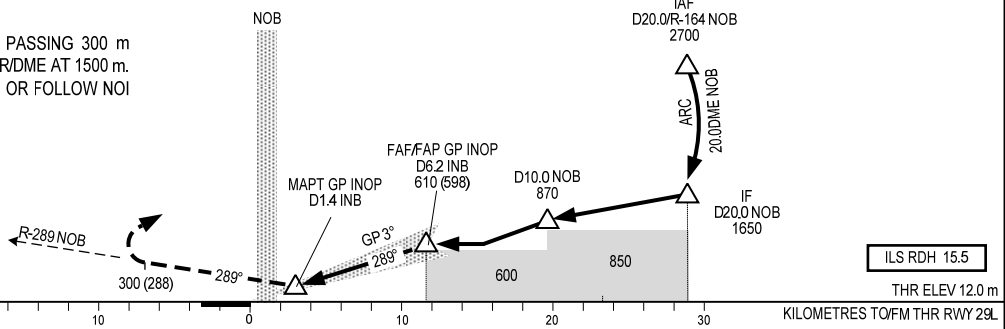


TRANSITION LEVEL FL100

MISSED APPROACH:
INTERCEPT R-289 NOB, PASSING 300 m
TURN LEFT TO NOB DVORDME AT 1500 m.
JOIN HOLDING PATTERN OR FOLLOW NOI BAI TWR INSTRUCTIONS.



OCA (H)	A	B	C	D	GS	km/h	100	150	200	250	300	350
STRAIGHT-IN APPROACH	88 (76)	91 (79)	94 (82)	97 (85)	GS	km/h	100	150	200	250	300	350
GP INOP	150 (137)				FAF-MAPT 8.8896 km (4.8NM)	min:s	5:33	3:33	2:40	2:08	1:47	1:31
CIRCLING	200 (187)	360 (347)	450 (437)	600 (687)	RATE OF DESCENT	m/s	1.45	2.18	2.91	3.64	4.37	5.09

CIRCLING IS ONLY IN THE SOUTH OF RWY