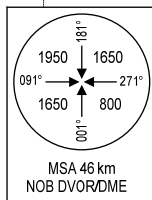


ELEV, ALT, HGT IN METRES  
DME DIST (D) IN NM  
BRG ARE MAG  
VAR 2°W

**NOTES:**

NOI BAI APP MAY ALLOW AIRCRAFT TO DESCEND TO 2150 m AT HALAN WHEN HAVING COORDINATED CLOSELY WITH HOA LAC AERODROME AND BEING APPROVED BY REGIONAL ATM AND COMMAND CENTRE I.  
IN CASE OF FLIGHT OPERATIONS IN HOA LAC AERODROME, AIRCRAFT USING APPROACH PROCEDURE FROM UPVAN MUST ENSURE TO MAINTAIN 2450 m OR ABOVE WHEN FLYING OVER HOA LAC AERODROME AND ONLY DESCEND WHEN HAVING COORDINATED CLOSELY WITH HOA LAC AERODROME AND BEING APPROVED BY REGIONAL ATM AND COMMAND CENTRE I.

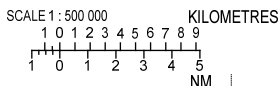


**VOR, DME REQUIRED**

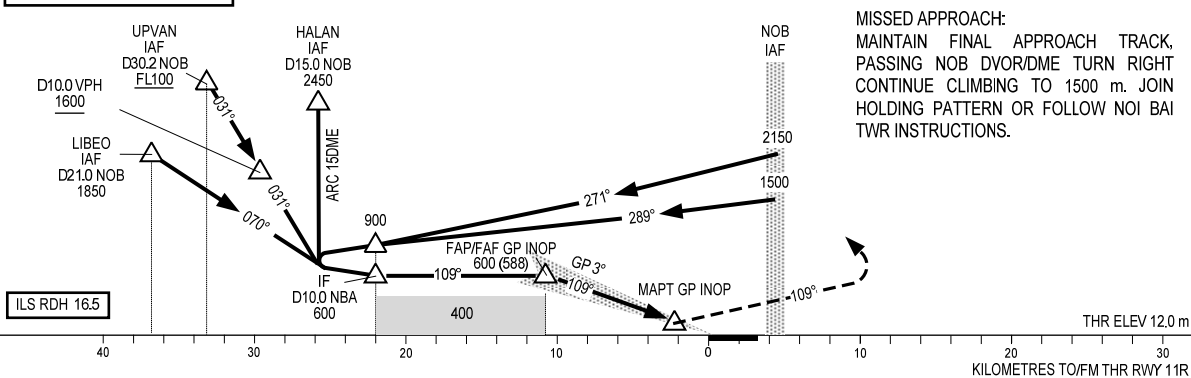
**NOTES:**  
LR-278 NOB USED FOR APPROACH PROCEDURE FROM UPVAN.  
LR-281 NOB USED FOR APPROACH PROCEDURE ARC 15 DME.

NOI BAI  
DVOR/DME 116.1  
NOB 21°12'47"N  
105°50'06"E

ILS/ILZ NBA - 108.3  
ILS/GP 334.1  
DME CH20X



TRANSITION LEVEL FL100 105°30'E 106°00'E



**MISSED APPROACH:**  
MAINTAIN FINAL APPROACH TRACK, PASSING NOB DVOR/DME TURN RIGHT CONTINUE CLIMBING TO 1500 m. JOIN HOLDING PATTERN OR FOLLOW NOI BAI TWR INSTRUCTIONS.

OCA/H					
OCA/H	A	B	C	D	
STRAIGHT-IN APPROACH	CAT I	63 (51)	66 (54)	69 (57)	72 (60)
	CAT II	53 (41)			
	GP INOP	150 (137)			
CIRCLING	200 (187)	360 (347)	450 (437)	600 (587)	

GS	km/h	100	150	200	250	300	350
FAF - MAPT 8.519 km (4.6 NM)	min:s	5:06	3:24	2:33	2:02	1:42	1:27
RATE OF DESCENT	m/s	1.46	2.20	2.93	3.66	4.40	5.13

CIRCLING IS ONLY IN THE SOUTH OF RWY