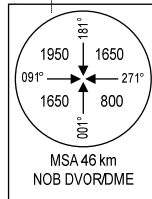


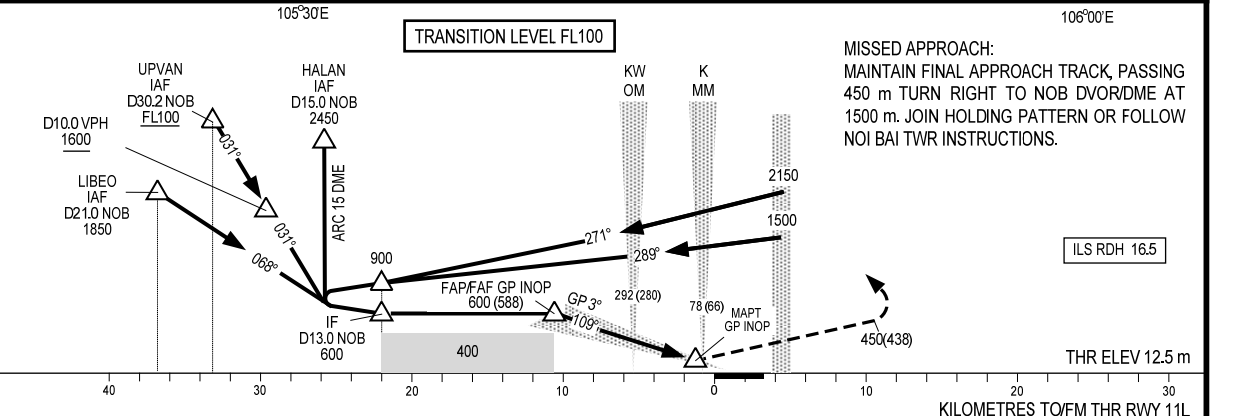
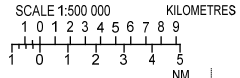
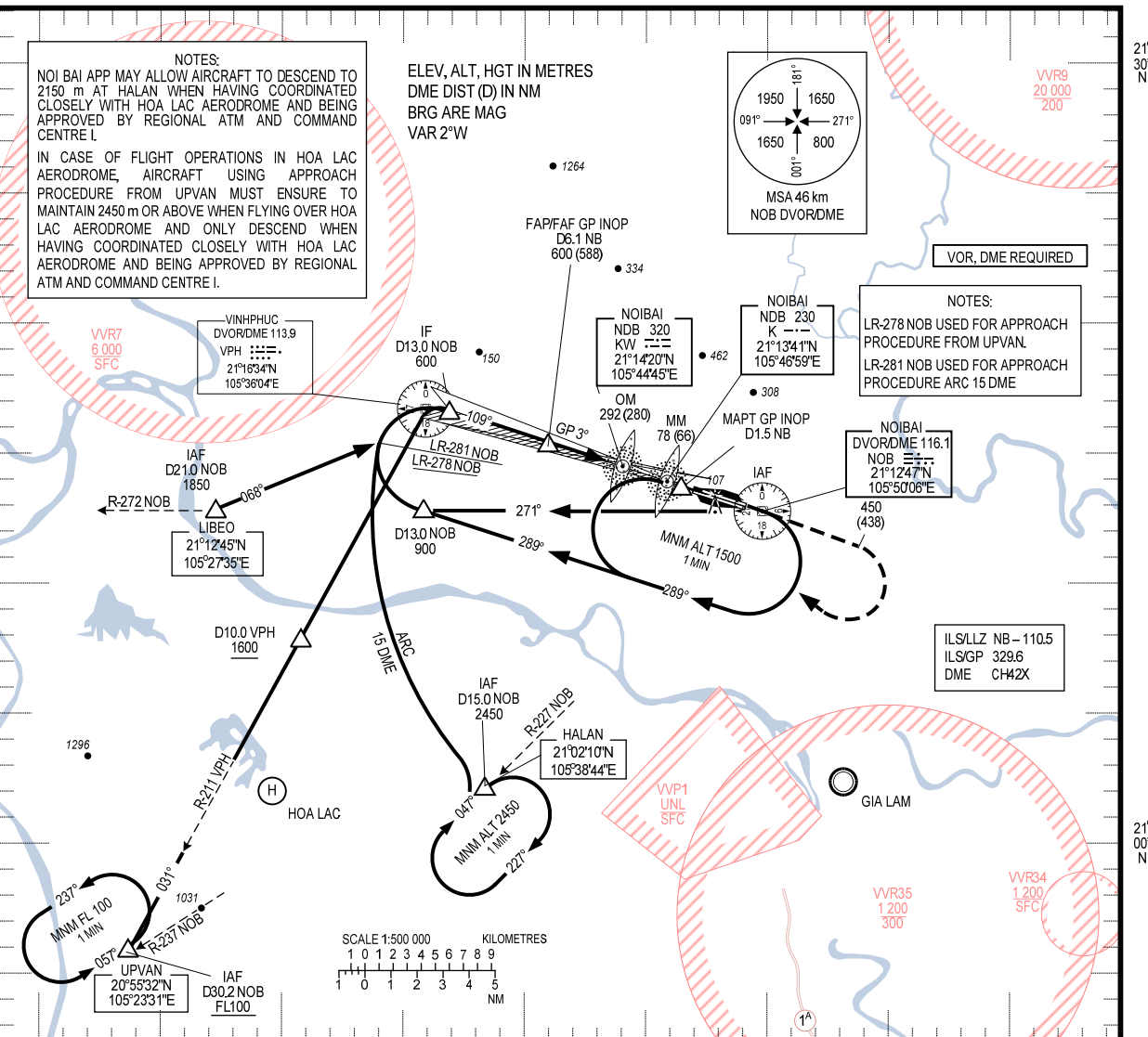
**NOTES:**  
NOI BAI APP MAY ALLOW AIRCRAFT TO DESCEND TO 2150 m AT HALAN WHEN HAVING COORDINATED CLOSELY WITH HOA LAC AERODROME AND BEING APPROVED BY REGIONAL ATM AND COMMAND CENTRE I.  
IN CASE OF FLIGHT OPERATIONS IN HOA LAC AERODROME, AIRCRAFT USING APPROACH PROCEDURE FROM UPVAN MUST ENSURE TO MAINTAIN 2450m OR ABOVE WHEN FLYING OVER HOA LAC AERODROME AND ONLY DESCEND WHEN HAVING COORDINATED CLOSELY WITH HOA LAC AERODROME AND BEING APPROVED BY REGIONAL ATM AND COMMAND CENTRE I.

**ELEV, ALT, HGT IN METRES  
DME DIST (D) IN NM  
BRG ARE MAG  
VAR 2°W**



**VOR, DME REQUIRED**

**NOTES:**  
LR-278 NOB USED FOR APPROACH PROCEDURE FROM UPVAN  
LR-281 NOB USED FOR APPROACH PROCEDURE ARC 15 DME



**MISSED APPROACH:**  
MAINTAIN FINAL APPROACH TRACK, PASSING 450 m TURN RIGHT TO NOB DVORDME AT 1500 m. JOIN HOLDING PATTERN OR FOLLOW NOI BAI TWR INSTRUCTIONS.

**ILS RDH 16.5**

OCA/H		A	B	C	D
STRAIGHT-IN APPROACH	CAT I	68 (56)	71 (59)	74 (62)	77 (65)
	GP INOP	150 (137)			
CIRCLING		200 (187)	360 (347)	450 (437)	600 (587)

GS	km/h	100	150	200	250	300	350
FAP/FAF - MAPT 8.519 km (4.6 NM)	mins	5:06	3:24	2:33	2:02	1:42	1:27
DISTANCE	DME	6.1	5	4	3	2	1.5
HEIGHT	m	588	481	384	287	190	138

CIRCLING IS ONLY IN THE SOUTH OF RWY