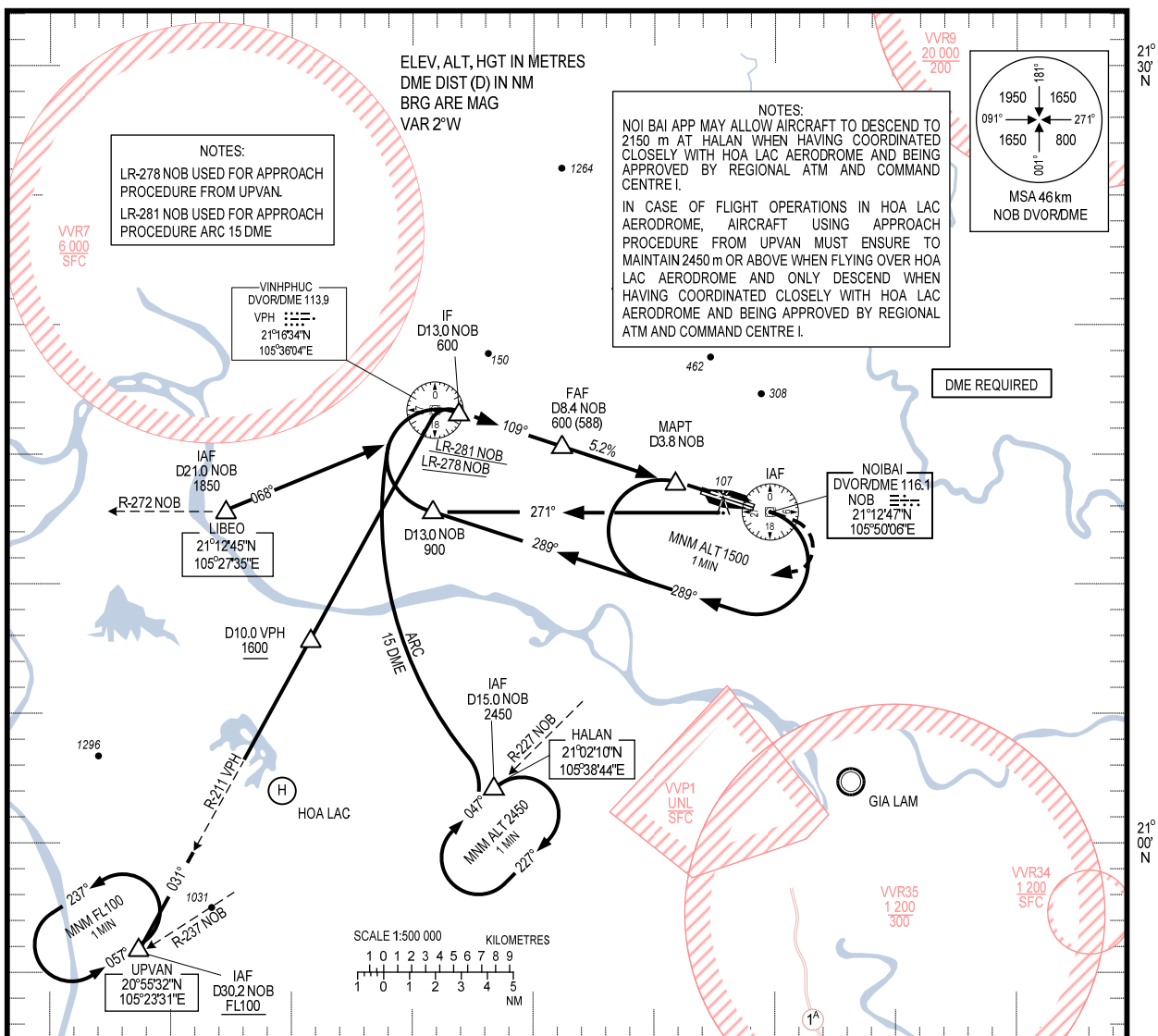
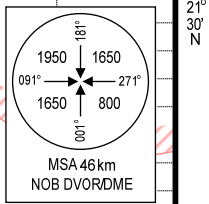


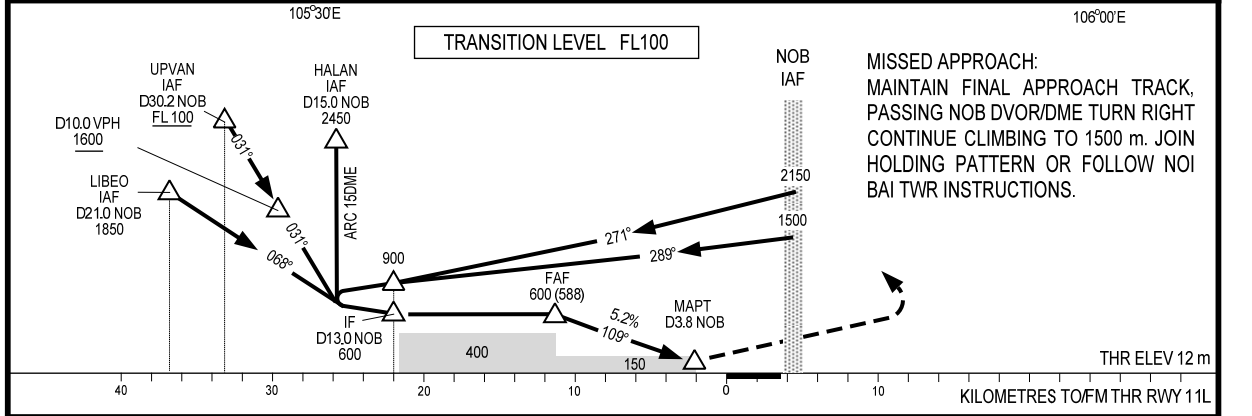
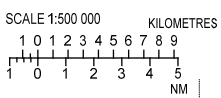
TMC: 125.1 PRI
126.575 SRY
ARR: 121.0 PRI
120.075 SRY
TWR: 118.4 PRI
118.9 SRY



NOTES:
NOI BAI APP MAY ALLOW AIRCRAFT TO DESCEND TO 2150 m AT HALAN WHEN HAVING COORDINATED CLOSELY WITH HOA LAC AERODROME AND BEING APPROVED BY REGIONAL ATM AND COMMAND CENTRE I.
IN CASE OF FLIGHT OPERATIONS IN HOA LAC AERODROME, AIRCRAFT USING APPROACH PROCEDURE FROM UPVAN MUST ENSURE TO MAINTAIN 2450 m OR ABOVE WHEN FLYING OVER HOA LAC AERODROME AND ONLY DESCEND WHEN HAVING COORDINATED CLOSELY WITH HOA LAC AERODROME AND BEING APPROVED BY REGIONAL ATM AND COMMAND CENTRE I.



DME REQUIRED



					GS	km/h	100	150	200	250	300	350
					FAF-MAPT 8.519 km (4.6 NM)	mins	5:06	3:24	2:33	2:02	1:27	1:33
OCA (H)	A	B	C	D	RATE OF DESCENT	m/s	1.46	2.18	2.91	3.63	4.37	5.09
STRAIGHT-IN APPROACH	150 (137)				DISTANCE	DME	8.4	8	7	6	5	3.8
CIRCLING	200 (187)	360 (347)	450 (437)	600 (587)	HEIGHT	m	588	550	454	356	259	138

CIRCLING IS ONLY IN THE SOUTH OF RWY